

# THOMSON

## *Complete Catalogue 2019*





**mettez  
le doigt  
sur les  
perfections du  
RZ 194**

éclairage du cadran  
prise d'antenne de voiture  
contrôle automatique de fréquence

la vraie musicalité d'un poste ultra sensible  
la modulation de fréquence la plus fidèle  
l'élégance distinguée dans un encombrement minimum

**NOUVEAU RECEPTEUR A TRANSISTORS**  
**DUCRETET**  
**THOMSON**

60s

110" SUPER PLAT

téléviseur universel  
**DUCRETET  
THOMSON**

70s

le **THOMSON** est là!...  
avec le 1" tourne-disques  
conçu spécialement  
pour les microsillons.

Conçu pour les 4 vitesses  
de 16 à 78 tours - 33 1/3 et 45 tours  
moteur 16 TOURS

Conçu pour reproduire  
la qualité des meilleures  
gravures 2" en cellule de lecture  
avec les profils des microillons  
modernes : elle ne pèse que 5 gr.

Conçu pour respecter  
vos microsillons : son bras  
mouvement "d'arc-boutant" évite tout  
contact de l'aiguille de lecture à l'empreinte  
sans endommager le disque.

VALISE TOURNE-DISQUE 1" **DUCRETET-THOMSON**

50s

**LA VOIX DU MONDE**

**DUCRETET-THOMSON**

30s

**RADIO & ELECTROPHONES**  
**DUCRETET-THOMSON**

La musique  
que  
l'on goûte...



# Index



*Antenna* \_\_\_\_\_

TV / FM / DBV-T Antenna.....6



*Sound* \_\_\_\_\_

Wireless Headphones .....	12	Headphones Case.....	22
On- & Over-Ear-Headphones .....	16	Ear pads .....	22
In-Ear-Headphones .....	19	Microphon .....	23



*TV/Hifi* \_\_\_\_\_

Remote Controle .....	26	Wall Mounts.....	28
-----------------------	----	------------------	----



**THOMSON**

# *Antenna*



# Antennas

TV / FM / DVB-T ANTENNA

TV/FM/DVB-T Antenne



THOMSON

TV/FM/DVB-T Antenna „ANT-1608BK DVB-T/DVB-T2 Room Antenna, Flat, Active, Performance 55“

Performance	55
Coax Cable Length	1.5 m
Frequency Range	UHF: 470-790MHz/ VHF: 174-230 MHz

- 5V power supply via remote power feeding from the receiver via the coaxial cable, through separate 230 V plug mains adapter or via TV with USB connection
- LED to monitor readiness for operation
- Ultra-flat construction with base
- Wall mounting possible with supplied screws and dowels
- Noise suppression
- 75 Ohm antenna connection cable with 9.5 mm coax plug



THOMSON

TV/FM/DVB-T Antenna „ANT1487 for TV/Radio, HDTV/3D, LTE, DVB-T/T2, TV-Simulator“

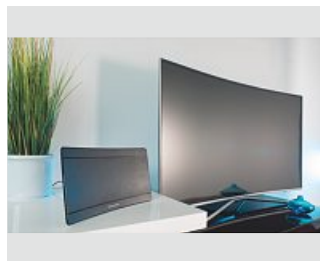
Performance	45
Coax Cable Length	1 m
Frequency Range	UHF: 470-790MHz/ VHF: 174-230 MHz

- Indoor Antenna:
- Suitable for HDTV and 3D reception
- Adjustable amplifier for signal amplification with Performance 45
- 5V power supply via separate 230 V adapter
- LED to monitor readiness for operation
- 75 Ohm antenna connection cable with 9.5 mm coax plug

TV Simulator:

- When switched off, the indoor antenna offers a TV simulator function, thereby simulating your presence at home to deter burglars
- The antenna simulates the light of a switched-on TV with different brightness
- An irregular changing cycle creates realistic TV simulation (light) through random colour changes
- 5 different modes can be selected via a control switch on the back of the antenna: Antenna operation/TV simulator/white/blue or red mood light
- TV simulator operation: 8h (automatic shut-off)

Black					00131943
		10	SC		



THOMSON

TV/FM/DVB-T Antenna „ANT1518W-UHD/4K DVB-T/DVB-T2 Curved indoor antenna, Performance 45“

Performance	45
Coax Cable Length	1.4 m
Frequency Range	UHF: 470-790MHz/ VHF: 174-230 MHz

- Innovative indoor antenna with a curved design. The curved shape matches curved TVs perfectly
- Power supply via remote power feeding from the receiver via the coax cable, through separate 230 V plug mains adapter or via TV with USB connection
- Supports 4k ultra HD technology for brilliant picture quality
- Ultra-flat construction with base
- Noise suppression
- 75 Ohm antenna connection cable with 9.5 mm coax plug

Black					00132185
		8			



THOMSON

TV/FM/DVB-T Antenna „ANT1538 Indoor Antenna for TV/Radio, HDTV/3D, DVB-T/T2, Active, Perf. 45“

Performance	45
Coax Cable Length	1.5 m
Frequency Range	UHF: 470-790MHz/ VHF: 174-230 MHz

- Suitable for HDTV and 3D reception
- Controllable amplifier for signal amplification
- 5V power supply via separate 230 V adapter
- LED to monitor readiness for operation
- 75 Ohm antenna connection cable with 9.5 mm coax plug

Black					00132186
		10			

Black					00132190
		10			



**THOMSON**

## ANT1528BK HD Indoor Antenna for TV/Radio DVB-T2, Flat, Active, Perform. 45

Performance	45
Coax Cable Length	1.5 m
Frequency Range	UHF: 470-790MHz/ VHF: 174-230 MHz

- DVB-T/DVB-T2 flat antenna
- Powerful integrated amplifier for optimised playback of the received signals
- Also receives HD and 3D signals
- 5V power supply via remote power feeding from the receiver via the coax cable, or through separate 230 V plug mains adapter (included in the extent of delivery)
- Integrated noise filter avoids interference and improves the signal
- LED to monitor readiness for operation
- Antenna can be switched off (e.g. to save power while on holiday)
- Ultra-flat construction with base
- Can be fastened to the wall using the supplied wall bracket
- 75 Ohm antenna connection cable with 9.5 mm coax plug

Black	00132188
6	



**THOMSON**

## ANT1528W HD Indoor Antenna for TV/Radio, DVB-T2, Flat, Active, Perform. 45

Performance	45
Coax Cable Length	1.5 m
Frequency Range	n/s

- DVB-T/DVB-T2 flat antenna
- Powerful integrated amplifier for optimised playback of the received signals
- Also receives HD and 3D signals
- 5V power supply via remote power feeding from the receiver via the coax cable, or through separate 230 V plug mains adapter (included in the extent of delivery)
- Integrated noise filter avoids interference and improves the signal
- LED to monitor readiness for operation
- Antenna can be switched off (e.g. to save power while on holiday)
- Ultra-flat construction with base
- Can be fastened to the wall using the supplied wall bracket
- 75 Ohm antenna connection cable with 9.5 mm coax plug

White	00132187
6	



**THOMSON**

## TV/FM/DVB-T Antenna „ANT-1418BK DVB-T/DVB-T2 Room Antenna, Performance 35“

Performance	35
Coax Cable Length	1.5 m
Frequency Range	n/s

- For TV sets and VHF receivers / tuners
- Revolving UHF ring dipole, VHF rod dipole
- Additional 12 V input
- With built-in 230V/50Hz mains adapter
- 75 Ohm antenna connection cable

Black	00132183
6	



**THOMSON**

## TV/FM/DVB-T Antenna „ANT1438 DAB/DAB + Indoor Radio Antenna, active, Performance 35“

Performance	35
Coax Cable Length	1.5 m
Frequency Range	UHF: 470-790MHz/ VHF: 174-230 MHz

- Additional power supply unit for power supply
- Separate on/off switch on the mains lead to reduce energy consumption
- Signal amplification for perfect reception performance
- Modern, compact and high-quality designer indoor antenna
- With VHF function
- For band III and L
- Includes 1.5 m connection cable with F-plug
- 220-240V/50Hz power supply unit
- Frequency range: 87.5 - 108 MHz (VHF), 174 - 240 MHz (Band III), 1452 - 1492 MHz (Band L)

Black	00132177
6	

TV / FM / DVB-T ANTENNA



# Antennas

TV / FM / DVB-T ANTENNA



THOMSON

## ANTUSB1428 DVB-T/DVB-T2 Flat Antenna, Active, Performance 35

Performance	35
Coax Cable Length	1.5 m
Frequency Range	UHF: 470-790MHz/ VHF: 174-230 MHz

- Portable, omnidirectional DVB-T/DVB-T2 flat antenna for TV and notebook
- Also developed for a PC with DVB-T tuner (supplied via the USB port)
- High receiving performance with a small size
- Broadband amplifier for improved reception in regions with low signal strengths
- Power supply via USB, 5 V remote power feeding or external power supply unit
- Noise suppression
- Control and fine adjustment of the best reception with the turn of a button
- 75 Ohm antenna connection cable

Black/High-Gloss Black	00132182
3	



THOMSON

## TV/FM/DVB-T Antenna „ANT1318 HDTV Rod Antenna, with USB Power, Mounting Clips, Performance 25“

Performance	25
Coax Cable Length	2.28 m
Frequency Range	UHF: 470-790MHz/ VHF: 174-230 MHz

- Ultra-slim active rod antenna
- Supports 4k Ultra HD technology for breathtaking picture quality
- Powerful integrated amplifier, supplied from TV e.g. via USB power
- 5 V power supply via remote power feeding from the receiver via the coax cable or via a separately available 230 V plug-in power supply unit
- Supports mobile use thanks to the antenna's power supply via devices with a USB port (e.g. notebook)
- Flexible installation thanks to self-adhesive compression clips and especially long antenna cable (e.g. behind TV, cabinets or sound bars)
- Omnidirectional antenna, therefore can be positioned horizontally as well as vertically
- Optional connection via F-plug or enclosed coaxial adapter

Black	00132181
6	



THOMSON

## TV/FM/DVB-T Antenna „ANT-1118BK DVB-T/DVB-T2/DAB Rod Antenna, passive, Performance 15“

Performance	15
Coax Cable Length	n/s
Frequency Range	UHF: 470-790MHz/ VHF: 174-230 MHz

- Frequency range: B III (174 - 230 MHz) and B IV (470 - 862 MHz)
- Antenna connection cable 1 m
- With adapter: F-plug - coaxial socket

Black	00132179
6	



THOMSON

## TV/FM/DVB-T Antenna „ANT-1218BK DVB-T/DVB-T2 Rod Antenna, Active, Performance 15“

Performance	15
Coax Cable Length	1.5 m
Frequency Range	n/s

- Omnidirectional DVB-T/DVB-T2 rod antenna
- 5 V power supply via remote power feeding from the receiver via the coax cable
- Incl. coax socket to F-plug adapter
- Noise suppression
- With external power supply unit
- 75 Ohm antenna connection cable

Black	00132180
24	





THOMSON

ANT2218 DVB-T/DVB-T2  
Outdoor Antenna,  
Performance 15

Performance	n/s
Coax Cable Length	n/s
Frequency Range	n/s

- Mounting option for horizontal and vertical polarisation
- Suitable for mast mounting
- Frequency range: 470 - 790 MHz (UHF)
- Zinc-plated mast clamp, clamping range: 22 - 60 mm
- Length: 1.045 m

TV / FM / DVB-T ANTENNA

n/s	00132178
	3



**THOMSON**

## *Sound*



## Bluetooth Headset



**THOMSON**

### Bluetooth Headset "WEAR7208"

Max. Standby	400 h
Max. Talk Time	4.5 h
Weight	12 g
Bluetooth Version	4.2

- Convenient cable-mounted volume control
- Integrated phone function with call answer button and microphone for smartphones
- Remote function for music control (pause/play/forward/back) if supported by the telephone
- Silicone ear pads in S, M and L for a comfortable and secure fit
- The special Sportfix design of the earpiece ensures a firm and secure grip in the ear - ideal for during sport, for example: the silicon clip also secures the in-ear headphones in the ear
- Also for wireless stereo via audio streaming (A2DP, HFP, HSP, AVRCP)
- Up to 4.5 hours of music or telephone function
- Up to 400 hours in standby
- Simple toggling between music and telephone calls
- Passive noise reduction
- Bluetooth-enabled playback device, e.g. smartphone

Black	00132640
Grey	00132641
Turquoise	00132642
Purple	00132643
	10



**THOMSON**

### WHP-6007B On-Ear Bluetooth Headset

Max. Standby	185 h
Max. Talk Time	6 h
Weight	171 g
Bluetooth Version	4.2

- Bluetooth 4.2 headphones for listening to music anywhere and/or telephoning without tangled cables
- Alternative classic 3.5 mm cable headphone connection, for use in flight mode or when the battery is low for example
- The control buttons support the remote function for music control with Play/Pause/Next track/Previous track and volume control
- Integrated microphone for telephone calls or voice commands
- Simple toggling between music and calls
- Wearing comfort thanks to adjustable headband
- 40 mm loudspeaker for excellent and powerful sound
- Soft ear pads for long and pleasant wearing comfort
- Earpads can be turned in: ideal for easy and compact transport
- DJ headband function for single-sided use
- Self-contained acoustics for excellent noise insulation
- Battery life of 8 hours on medium volume, charging time around 2 hours
- Supported Bluetooth protocols: HFP, HSP, A2DP, AVRCP for appropriate control management during telephony, audio data or audio streaming such as pick up/hang up, play/pause/next track/previous track (if supported by the telephone)

Black	00131987
	10 SC



**THOMSON**

### WHP6316BT Wireless Headphones, Bluetooth, with Charging Station

Max. Standby	70 h
Max. Talk Time	n/s
Weight	654 g
Bluetooth Version	4.1

- Versatile headphones: for the TV, for e.g. VoIP via the integrated microphone or for mobile use - watching TV in the evening, or use the Bluetooth headphones during the day while on the move or in the office
- Supports remote functions such as Play/Pause and call acceptance, as well as skip track forward and back
- Supports audio/video remote control protocols (AVRCP) such as Play/Pause/FF/REW (provided this is supported by the TV set or tablet/phone)
- Supports wireless stereo music enjoyment via audio streaming profiles (A2DP)
- Up to 12 hours of TV / music and talk time (exchangeable standard batteries) at medium volume
- With charging station: charging station also serves as a holder so that the headphones retain their stability when not in use
- Volume control and power button with LED display conveniently positioned on the headphones
- Elastic and adjustable-size headband fits the shape of the head comfortably
- Padded and flexible ear cushions
- Noise and echo cancellation (microphone technology)

Black/Blue	00131976
	3 SC



**THOMSON**

### "WEAR 6206 BT" Bluetooth Headset

Max. Standby	180 h
Max. Talk Time	4 h
Weight	12 g
Bluetooth Version	4.1

- Sweat-resistant earphone allows intensive use and increases the durability of the product
- Convenient cable-mounted volume control
- Integrated phone function with call answer button and microphone for smartphones
- Remote function for music control (pause/play/forward/back) if supported by the telephone
- Displays the headset battery state via the status bar of the smartphone as far as supported by the smartphone
- Allows simultaneous connection of the headset with two smartphones
- For a secure, stable hold - e.g. also during sports activities
- Also for wireless stereo via audio streaming (A2DP)
- Up to 4 hours of music or phone function
- Silicone earbuds in three different sizes (S, M, L) for an individual, perfect fit
- Easy switching between music and telephone conversation
- Passive noise reduction
- Bluetooth enabled mobile phone

Grey/Orange	00131978
	12 BK



**THOMSON**

## WHP6027 Over-Ear BT-HQ Headset with SPT Chip

Max. Standby	300 h
Max. Talk Time	15 h
Weight	286 g
Bluetooth Version	4.0

- High-quality audiophile sound due to:
- High-quality paired components such as: 50 mm Loudspeaker Combined with High-Quality Bluetooth Technology (CSR 4.0 Chip) and SPT Chip Set
- SPT creates an optimised sound that compensates even design-related sources of error in headphones, e.g. linear and non-linear distortion, linearity of the sound phase for the greatest possible hearing enjoyment
- Its closed headset system with the extra-soft ear pads ensures punchy and yet insulated sound
- Alternative 3.5 mm cable for cabled use (e.g. in flight mode or when the battery is low)
- Control buttons on the headphones support the remote function for music control with Play/Pause/Next track/Previous track and telephone functions (Pause/Hang up/On/Off) and volume control
- Integrated microphone for telephone calls or voice commands
- Simple toggling between music and calls
- Extra-soft headphone band with metal sliders for optimised fit to the head circumference
- Metal earpad holder for stable axial adjustment
- Integrated battery with a runtime of up to 15 hours and a charge time of 3 hours

Black/Blue	00131986
	6 SC



**THOMSON**

## Bluetooth Headset "WHP-6017 P for Children"

Max. Standby	180 h
Max. Talk Time	7 h
Weight	80 g
Bluetooth Version	3.0 + EDR

- Runtime of up to 7 hours (due to the integrated lithium polymer battery)
- The sensitive ears of children are protected by a volume limitation of max. 85 dB according to EN 71-1 standard
- Perfect size and fit for children
- Allows comfortable wearing due to the light construction, the soft earbuds and adjustable bands
- Recommended for children aged between 8 and 14 years
- With 4 stickers for customisation

Pink	00131972
Blue	00131973
	8 BK



**THOMSON**

## WHP-6005BT Bluetooth Headset

Max. Standby	180 h
Max. Talk Time	7 h
Weight	80 g
Bluetooth Version	3.0 + EDR

- Supports the remote function for music control with play/pause/title forward/title back
- Supports wireless stereo music enjoyment via the audio streaming profile (A2DP)
- Supports audio/video remote control protocols (AVRCP) like play/pause/title forward/title back (if supported by the phone)
- Music and talk time: up to 7 hours (integrated lithium polymer battery)
- Also suitable for telephony e.g. in a car (HFP); can also be used as a headset (HSP) with call management like call answer/end/reject, redialling
- Easy switching between music and phone calls
- Also suitable e.g. for internet telephony (VoIP, Skype)
- Adjustable headband provides convenience and comfort
- Noise and echo cancellation (microphone technology)
- Ideal for on the go (foldable)
- Soft foam pads
- Right/left side with marking, also in Braille

Black	00131975
	12 SC

### Wireless Headphones



**THOMSON**

## Wireless Headphones "WHP5305BK Senior Citizen"

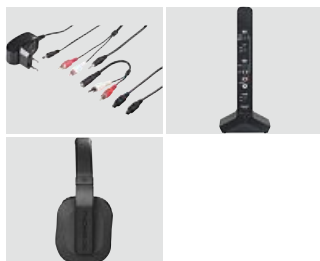
Connection	3.5 mm Jack Plug
Material	Plastic Material
Sensitivity	n/s
Speaker Diameter	n/s
Frequency Range	30 Hz - 15 kHz
Impedance	n/s
Range	20 m
Transmission Frequency	2400 MHz

- Easy to set up and use thanks to the automatic connection and the clearly arranged controls
- Acoustic optimization for adjustment to the reduced ability to hear of persons at an advanced age
- Wireless music transfer over a range of up to 20 m
- Quick charge function: simultaneous charge of the battery thanks to the integrated charging function
- The external microphone allows you to hear other noises in the room while watching TV (e.g. ringing of the doorbell or telephone)
- Balance control for volume adjustment on the headphones (on the right/left)
- Excellent transmission reliability due to noise-less 2.4 GHz carrier frequency
- Maximum wear comfort due to the low weight of the headphones and the stethoset
- Wireless transmission is stopped automatically if no audio signal is nearby (AUTO OFF)
- Integrated lithium polymer battery with low self-discharge for up to 9 hours of continuous operation

Black	00131970
	6 SC



# Headphones



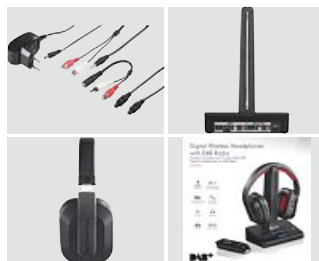
**THOMSON**

## Wireless Headphones "WHP5327, 2,4GHz, Over-Ear"

Connection	3.5 mm Jack Plug
Material	Plastic Material
Sensitivity	120 dB
Speaker Diameter	n/s
Frequency Range	20 Hz - 22 kHz
Impedance	24 Ohm
Range	20 m
Transmission Frequency	2400 MHz

- Simple installation and operation thanks to integrated volume control on the headphones
- Integrated charging station which serves as a holder for the headphones when not in use
- Up to 8 hours first-class music enjoyment with rechargeable batteries
- Pleasant wearing comfort thanks to soft-padded earpads and adjustable headband
- Both analogue and digital inputs (can be toggled) on the transmitter for maximum transmission source options (TV, HiFi, mobile devices such as MP3, smartphone/tablet and PC/notebook)
- Digital input can be used both coaxially and optically in order to transfer noise-free sources with as little delay as possible (e.g. listening to TV while watching it)
- The headphones can also optionally be used with cables (for life on the move, e.g. for smartphone or MP3)
- Range: approx. 20 m with clear line of sight, 10-15 m in buildings (depending on the ambient conditions)

Black	00131988
6 SC	



**THOMSON**

## Wireless Headphones "WHP5327, 2,4GHz, Over-Ear, with DAB Radio"

Connection	3.5 mm Jack Plug
Material	Plastic Material
Sensitivity	120 dB
Speaker Diameter	n/s
Frequency Range	20 Hz - 22 kHz
Impedance	24 Ohm
Range	30 m
Transmission Frequency	2400 MHz

- Digital technology for signal transmission and input/output selection (optical or analogue connections) ensures noise-free sources and minimum time delays to achieve dynamic, high-quality sound on a TV or hi-fi
- DAB receiver enables digital radio broadcasts to be heard via wireless headphones or stereo systems (DAB upgrade for hi-fi systems)
- Crystal-clear sound reproduction at up to approx. 30 m with clear line of sight, 10-15 m in buildings (depending on the ambient conditions)
- Integrated charging station which serves as a holder for the wireless headphones when not in use
- Simple installation and operation thanks to integrated volume control on the headphones
- Up to 8 hours of first-class music enjoyment with rechargeable batteries
- The headphones can also optionally be used with cables (for life on the move, e.g. for smartphone or MP3)
- Pleasant wearing comfort thanks to soft-padded earpads and adjustable headband

Black/Red	00131989
4 SC	



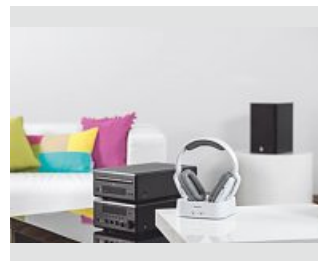
**THOMSON**

## Wireless Headphones "WHP3001BK"

Connection	3.5 mm Jack Plug
Material	Plastic Material
Sensitivity	107 dB
Speaker Diameter	40 mm
Frequency Range	20 Hz - 20 kHz
Impedance	32 Ohm
Range	100 m
Transmission Frequency	863 MHz

- Integrated charging function
- Charging station also usable as a holder so that the headphones maintain their stability when not in use
- Volume control and power button with LED indicator, easy to operate on the headphones
- Three transmission channels for avoiding interference, other radio sets in the living area can therefore not interfere when you listen to music
- Great frequency stability due to the PLL system for optimal transmission
- Automatic station search
- Range: up to 100 m in open space, approx. 20 - 30 m in buildings for much freedom of movement
- Elastic and padded headband comfortably adapts to the shape of your head
- Padded and flexible ear cushions for ultra portability

Black	00131957
3 SC	



**THOMSON**

## Wireless Headphones "WHP3311 UHF"

Connection	3.5 mm Jack Plug
Material	Plastic Material
Sensitivity	107 dB
Speaker Diameter	40 mm
Frequency Range	20 Hz - 20 kHz
Impedance	32 Ohm
Range	100 m
Transmission Frequency	863 MHz

- Modern, futuristic design
- Integrated charging function
- Charging station also usable as a holder so that the headphones maintain their stability when not in use
- Volume control and power button with LED indicator, easy to operate on the headphones
- Three transmission channels for avoiding interference, other radio sets in the living area can therefore not interfere when you listen to music
- Great frequency stability due to the PLL system for optimal transmission
- Automatic station search
- Range: up to 100 m in open space, approx. 20 - 30 m in buildings for much freedom of movement
- Elastic and padded headband comfortably adapts to the shape of your head
- Padded and flexible ear cushions for ultra portability

Black/Blue	00131959
White	00131960
3 SC	



**THOMSON**

## WHP 3203 D PLL Wireless Headphones

Connection	3.5 mm Jack Plug
Material	Plastic Material
Sensitivity	106 dB
Speaker Diameter	n/s
Frequency Range	40 Hz - 12 kHz
Impedance	32 Ohm
Range	100 m
Transmission Frequency	863 MHz

- Noise suppression system provides superior audio quality (PLL system)
- Volume control on the headphones
- 2 transmission channels for avoiding interference
- Ergonomically shaped, very soft ear-piece for increased carrying comfort
- Self-regulating headband provides a comfortable fit
- Integrated charging function/battery charge indicator
- 863 MHz transmission frequency
- Radio technology for an outstanding range of 100 m with a free line of sight

Black				00131966
		4	SC	



**THOMSON**

## WHP 3203 PLL Wireless Headphones

Connection	3.5 mm Jack Plug
Material	Plastic Material
Sensitivity	106 dB
Speaker Diameter	n/s
Frequency Range	40 Hz - 12 kHz
Impedance	32 Ohm
Range	100 m
Transmission Frequency	863 MHz

- Noise suppression system provides superior audio quality (PLL system)
- Volume control on the headphones
- 2 transmission channels for avoiding interference
- Ergonomically shaped, very soft ear-piece for increased carrying comfort
- Self-regulating headband provides a comfortable fit
- Integrated charging function/battery charge indicator
- 863 MHz transmission frequency
- Radio technology for an outstanding range of 100 m with a free line of sight

Black				00131965
		6	SC	



**THOMSON**

## A305 Supplement Headphones for WHP5305BK Wireless Headphones

Connection	3.5 mm Jack Plug
Material	Plastic Material
Sensitivity	n/s
Speaker Diameter	n/s
Frequency Range	30 Hz - 15 kHz
Impedance	n/s
Range	20 m
Transmission Frequency	n/s

- Supplement headphones for WHP5305BK wireless headphones
- Charging function of the supplement headphones ensured via the charging station of the WHP5305
- With volume control and balance adjustment on the right/left side of the headphones
- Excellent transmission reliability due to the interference-free 2.4 GHz carrier frequency
- Low weight and stethoscope headphones ensure comfortable wearing
- Automatic switch-off of the radio transmission when no audio signal is available (AUTO OFF)
- Additional microphone (switching between ambient noise and sound source by pressing a button)
- Integrated lithium polymer battery with low spontaneous discharge for up to 9 hours of continuous operation
- With status LED (on/off switch)
- Natural sound in CD quality, when required up to 120 dB loud
- With 2 pairs of silicone earbuds (in different sizes)

Black				00131971
		10	SC	

# Headsets

## Headset



**THOMSON**

### Headset "HED2307 with active noise canceling", Over-Ear

Connection	3.5 mm Jack Plug
Material	Plastic Material
Sensitivity (Headphone)	104
Sensitivity (Microphone)	-34 dB +/- 3 dB
Cable Length	1.2 m
Speaker Diameter	40 mm
Frequency Range (Headphone)	20 Hz - 20 kHz
Impedance (Headphone)	32 Ω

- Gold-plated jack plug ensures secure signal transmission and thus better audio quality
- Single-sided cable for avoiding cable clutter
- Foldable headphones for compact storage
- Adjustable headband
- Padded headband for comfortable wearing
- Swivelling ear cups provide a better fit and make wearing the headphones around the neck easier
- Padded ear cushions for comfortable wearing
- Active noise reduction for noise and sound suppression
- Remote function for music control (pause/play/forward/back) if supported by the telephone
- With an airplane adapter for listening to music in a plane
- With a bag for ideal protection of the headphones during transportation

Grey/White	00132630
6 SC	
Black	00132631
6	



**THOMSON**

### HED2807 Over-Ear Headphones

Connection	3.5 mm Jack Plug
Material	Plastic Material
Sensitivity (Headphone)	110 dB +/- 3 dB
Sensitivity (Microphone)	-42 +/- 4dB
Cable Length	1.5 m
Speaker Diameter	50 mm
Frequency Range (Headphone)	20 Hz - 20 kHz
Impedance (Headphone)	24 Ω

- Single-sided cable for avoiding cable clutter
- Remote function for music control (pause/play/forward/back) if supported by the telephone
- Integrated phone function with call answer button and microphone for smartphones
- Gold-plated jack plug ensures secure signal transmission and thus better audio quality
- Padded headband for comfortable wearing
- Padded close-fitting earpads for pleasant wearing
- Inclination earpads for better adjustment to the head

Anthracite/Black	00132628
6 BK	



**THOMSON**

### Headset "HED2207", On-Ear closed

Connection	3.5 mm Jack Plug
Material	Plastic Material
Sensitivity (Headphone)	110 dB/mW
Sensitivity (Microphone)	-42 dB +/- 3 dB
Cable Length	1.2 m
Speaker Diameter	40 mm
Frequency Range (Headphone)	20 Hz - 20 kHz
Impedance (Headphone)	32 Ω

- Integrated phone function with call answer button and microphone for smartphones
- Remote function for music control (pause/play/forward/back) if supported by the telephone
- Gold-plated jack plug ensures secure signal transmission and thus better audio quality
- Padded ear cushions for comfortable wearing
- Inclination and rotating earpads for better adjustment to the head
- Flat and foldable headphones for space-saving storage
- Twist-free ribbon cable
- Adjustable headband for size adaptation

White	00132629
Black	00132623
Blue	00132624
Red	00132625
Green	00132627
10 BK	



**THOMSON**

### HED2215BK On-Ear Headphones

Connection	3.5 mm Jack Plug
Material	Plastic Material
Sensitivity (Headphone)	100 dB/mW
Sensitivity (Microphone)	-42 dB +/- 3 dB
Cable Length	1.2 m
Speaker Diameter	40 mm
Frequency Range (Headphone)	20 Hz - 20 kHz
Impedance (Headphone)	24 Ω

- Integrated phone function with call answer button and microphone for smartphones
- Remote function for music control (pause/play/forward/back) if supported by the telephone
- Padded headband for comfortable wearing
- Gold-plated jack plug ensures secure signal transmission and thus better audio quality
- Padded, perfectly fitting ear cushions for comfortable wearing
- The ear cushions can be tilted and rotated which allows better adjustment to your head
- Torsion-free flat cable
- Marking for the right/left side (haptically in compliance with the Braille code)

Black	00132427
16 BK	

## Headphones



**THOMSON**

### EAR5105 Clip-On Earphones

Connection	3.5 mm Jack Plug
Material	Plastic Material
Sensitivity	99 dB/ mW
Cable Length	1.2 m
Speaker Diameter	13 mm
Frequency Range	20 Hz - 20 kHz
Impedance	32 Ω

- Gold-plated jack plug ensures secure signal transmission and thus better audio quality
- Perfect fit during sporting activities
- Elastic silicone sports band for an optimal and easy fit

Black					<b>00132458</b>
		10	BK		



**THOMSON**

### Headphones "HED1105", On-Ear

Connection	3.5 mm Jack Plug
Material	Plastic Material
Sensitivity	85 dB/ mW
Cable Length	1.2 m
Speaker Diameter	30 mm
Frequency Range	20 Hz - 20 kHz
Impedance	32 Ω

- Children's sensitive ears are protected by a volume limitation to max. 85 dB according to EN 71-1 standard
- Lightweight for ultra portability
- Adjustable headband
- Especially light: only 70g

Blue/White					<b>00132467</b>
Pink/White					<b>00132468</b>
		10	BK		



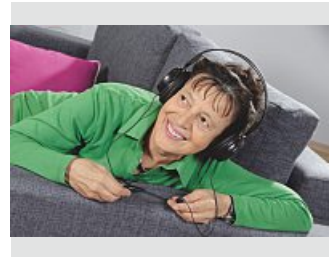
**THOMSON**

### HED1115BK On-Ear Headphones

Connection	3.5 mm Jack Plug
Material	Plastic Material
Sensitivity	95 dB/ mW
Cable Length	1.2 m
Speaker Diameter	27 mm
Frequency Range	20 Hz - 20 kHz
Impedance	32 Ω

- Comfortable foam ear pads
- Lightweight for ultra portability
- Technical Details:
- Connection: 3.5mm Jack Plug
- Design: On-Ear
- Material: Plastic Material
- Model: Stereo
- Sensitivity: 95 dB/ mW
- Volume Control: No
- Cable Length: 1.2m
- Speaker Diameter: 27
- Frequency Range: 20Hz - 20kHz
- Impedance: 32 Ω
- Colour: Black
- Line: HED1115
- Recommended Use: Mobile Music/ Mobile Phone

Black					<b>00132477</b>
		10	BK		



**THOMSON**

### HED2105 TV headphones

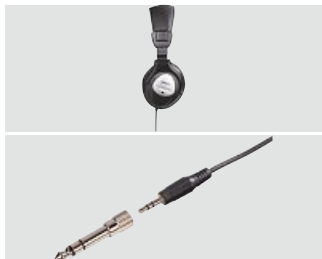
Connection	3.5 mm Jack Plug/6.35 mm Jack Plug
Material	Plastic Material
Sensitivity	102 dB/ mW
Cable Length	5 m
Speaker Diameter	40 mm
Frequency Range	20 Hz - 20 kHz
Impedance	32 Ω

- Padded ear cushions for comfortable wearing
- Extra-long cable (5 m), especially designed for connecting to TVs or HiFi systems
- Gold-plated plug with low contact resistance for secure signal transmission
- With a gold-plated 6.35 mm adapter e.g. for connection to a hifi system
- Separate volume control for left and right side
- Soft-touch double headband for extra comfort

Black					<b>00132478</b>
		12	BK		

# Headphones

ON- & OVER-EAR-HEADPHONES



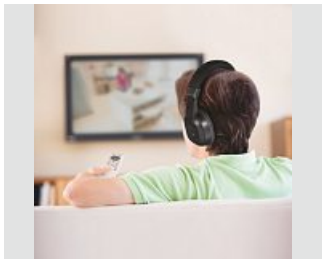
THOMSON

## HED4105 Over-Ear Hi-Fi Headphones

Connection	3.5 mm Jack Plug/6.35 mm Jack Plug
Material	Plastic Material
Sensitivity	105 dB/ mW
Cable Length	2 m
Speaker Diameter	40 mm
Frequency Range	20 Hz - 20 kHz
Impedance	32 Ω

- Single-sided cable for avoiding cable clutter
- Extra-long cable (2 m), especially designed for connecting to TVs or HiFi systems
- Gold-plated jack plug ensures secure signal transmission and thus better audio quality
- With a 6.35 mm adapter e.g. for connection to a hifi system
- Padded ear cushions for comfortable wearing
- Padded headband for comfortable wearing

Black	00132465
10	SC



THOMSON

## HED4407 TV Hi-Fi headphones

Connection	3.5 mm Jack Plug/6.35 mm Jack Plug
Material	Plastic Material
Sensitivity	92 dB/ mW
Cable Length	8 m
Speaker Diameter	40 mm
Frequency Range	20 Hz - 20 kHz
Impedance	32 Ω

- Extra-long cable (8 m), especially designed for connecting to TVs or HiFi systems
- Convenient cable-mounted volume control
- Single-sided cable for avoiding cable clutter
- Padded ear cushions for comfortable wearing
- Padded headband for comfortable wearing
- With a gold-plated 6.35 mm adapter e.g. for connection to a hifi system
- Gold-plated jack plug ensures secure signal transmission and thus better audio quality
- Adjustable headband

Black	00132469
10	SC



THOMSON

## HED2006BK/AN Over-Ear Headphones

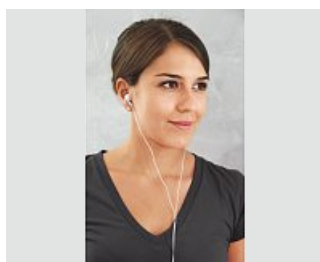
Connection	3.5 mm Jack Plug
Material	Plastic Material
Sensitivity	92 dB/ mW
Cable Length	1.2 m
Speaker Diameter	40 mm
Frequency Range	20 Hz - 20 kHz
Impedance	32 Ω

- Single-sided cable for avoiding cable clutter
- Gold-plated jack plug ensures secure signal transmission and thus better audio quality
- Padded, circumaural ear cushions with passive noise reduction
- Padded and adjustable headband for size adjustment and comfortable wearing

Anthracite/Black	00132426
10	SC



## Headset



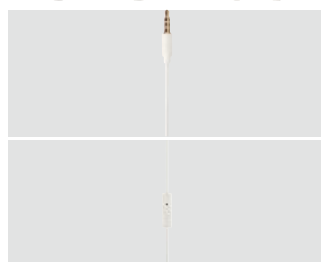
**THOMSON**

### Headset "EAR3005", In-Ear

Connection	3.5 mm Jack Plug
Material	Plastic Material
Sensitivity (Headphone)	92 dB +/- 3 dB
Sensitivity (Microphone)	-38 dB
Cable Length	1.2 m
Speaker Diameter	10
Frequency Range (Headphone)	20 Hz - 20 kHz
Impedance (Headphone)	32 Ω

- Integrated phone function with call answer button and microphone for smartphones
- Remote function for music control (pause/play/forward/back) if supported by the telephone
- Passive noise protection shields out exterior noise
- Silicone ear pads in S, M and L for a comfortable and secure fit

Bronze	00132497
Silver	00132496
Gold	00132495
	20 BK
Black	00132479
White	00132480
Grey	00132481
Purple	00132482
Turquoise	00132483
	20 BK



**THOMSON**

### Headset "EAR3008, Piccolino", In-Ear

Connection	3.5 mm Jack Plug
Material	Plastic Material
Sensitivity (Headphone)	96 dB +/- 3 dB
Sensitivity (Microphone)	-42 dB +/- 3 dB
Cable Length	1.2 m
Speaker Diameter	6 mm
Frequency Range (Headphone)	20 Hz - 20 kHz
Impedance (Headphone)	16 Ω

- Extra-lightweight headphones that can barely be felt while wearing
- Flexible silicone headphones housing for extremely comfortable wearing, does not press on the ear when lying down, for example
- Scratch-resistant, resilient silicone housing (earphones and plug)
- Easy cleaning
- Perfect for out and about thanks to the headset function
- Integrated telephony function with call pick-up and microphone for smartphones
- Remote function for controlling music (Pause/Play/Forward/Rewind), if supported by the telephone
- Passive noise cancellation screens out external noise
- Gold-plated plug

Ocean Blue	00132638
Light Purple	00132636
Light Rose	00132634
White	00132633
Light Turquoise	00132635
Black	00132632
	10



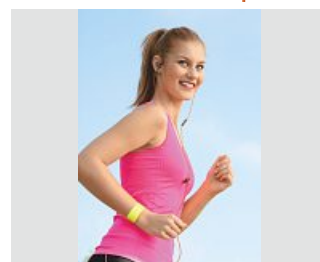
**THOMSON**

### Headset "EAR3207", In-Ear

Connection	3.5 mm Jack Plug
Material	Plastic Material
Sensitivity (Headphone)	92 dB +/- 3 dB
Sensitivity (Microphone)	-38 dB
Cable Length	1.2 m
Speaker Diameter	10
Frequency Range (Headphone)	20 Hz - 20 kHz
Impedance (Headphone)	32 Ω

- Integrated phone function with call answer button and microphone for smartphones
- Remote function for music control (pause/play/forward/back) if supported by the telephone
- Passive noise protection shields out exterior noise
- Silicone ear pads in S, M and L for a comfortable and secure fit

Anthracite	00132525
Black/Copper	00132526
Silver	00132527
	10 BK



**THOMSON**

### Headset "Flex", In-Ear

Connection	3.5 mm Jack Plug
Material	Plastic Material
Sensitivity (Headphone)	92 dB +/- 3 dB
Sensitivity (Microphone)	-38 dB
Cable Length	1.5 m
Speaker Diameter	9
Frequency Range (Headphone)	20 Hz - 20 kHz
Impedance (Headphone)	16 Ω

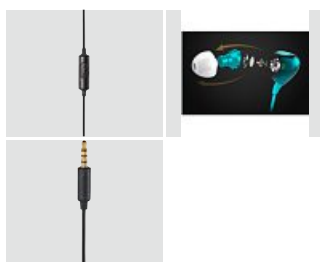
- Exact adaptation to the shape of your ear due to the flexible ear hook
- Integrated phone function with call answer button and microphone for smartphones
- Remote function for music control (pause/play/forward/back) if supported by the telephone
- Perfect fit during sporting activities
- Strap band reflector provides safety when doing sports e.g. in road traffic or the dark
- Gold-plated jack plug ensures secure signal transmission and thus better audio quality
- Passive noise protection shields out exterior noise
- Silicone ear pads in S, M and L for a comfortable and secure fit
- Practical clip for attaching the cable to the clothes and for reducing cable noise

Grey/Orange	00132466
	6 BK

IN-EAR-HEADPHONES

# Headsets | Headphones

IN-EAR-HEADPHONES



**THOMSON**

## EAR3827NCL In-Ear Headphones with Active Noise Cancelling

Connection	3.5 mm Jack Plug
Material	Plastic Material
Sensitivity (Headphone)	110 dB +/- 3 dB
Sensitivity (Microphone)	-42 dB +/- 3 dB
Cable Length	1.2 m
Speaker Diameter	9
Frequency Range (Headphone)	20 Hz - 20 kHz
Impedance (Headphone)	32 Ω

- Gold-plated jack plug ensures secure signal transmission and thus better audio quality
- Silicone ear pads in S, M and L for a comfortable and secure fit
- Active noise reduction for noise and sound suppression
- Remote function for music control (pause/play/forward/back) if supported by the telephone
- With an airplane adapter for listening to music in a plane
- With a bag for ideal protection of the headphones during transportation
- Integrated phone function with call answer button and microphone for smartphones
- Active noise-cancelling earphones, ideal for on the move thanks to their ultra-compact design
- Ergonomically shaped earphones for enhanced wearing comfort
- Incl. USB charging cable

Anthracite/Black	<b>00132491</b>
12 BK	



**THOMSON**

## EAR3227 In-Ear Headphones

Connection	3.5 mm Jack Plug
Material	Plastic Material
Sensitivity (Headphone)	96 dB +/- 3 dB
Sensitivity (Microphone)	-42 +/- 4 dB
Cable Length	1.2 m
Speaker Diameter	10
Frequency Range (Headphone)	20 Hz - 20 kHz
Impedance (Headphone)	32 Ω

- Integrated phone function with call answer button and microphone for smartphones
- Remote function for music control (pause/play/forward/back) if supported by the telephone
- Passive noise protection shields out exterior noise
- Silicone ear pads in S, M and L for a comfortable and secure fit

Black	<b>00132493</b>
10 BK	



**THOMSON**

## EAR3245 In-Ear Sport Earphones, sweat-resistant, splash-proof

Connection	3.5 mm Jack Plug
Material	Plastic Material
Sensitivity (Headphone)	98 dB/mW
Sensitivity (Microphone)	n/s
Cable Length	1.5 m
Speaker Diameter	10
Frequency Range (Headphone)	20 Hz - 20 kHz
Impedance (Headphone)	16 Ω

- Sweat-resistant earphone allows intensive use and increases the durability of the product
- Integrated phone function with call answer button and microphone for smartphones
- Gold-plated jack plug ensures secure signal transmission and thus better audio quality
- Passive noise protection shields out exterior noise
- Silicone ear pads in S, M and L for a comfortable and secure fit
- Splash-proof housing according to IPX7 protection class for activities in rainy weather
- Remote function for controlling the music (pause/play/forward/backward) if supported by the telephone

Grey/Orange	<b>00132464</b>
12 BK	

Headphones



**THOMSON**

## Headphones "EAR3056", In-Ear

Connection	3.5 mm Jack Plug
Material	Plastic Material
Sensitivity	102 dB/ mW
Cable Length	1.2 m
Speaker Diameter	9 mm
Frequency Range	20 Hz - 20 kHz
Impedance	16 Ω

- Passive noise protection shields out exterior noise
- Gold-plated jack plug ensures secure signal transmission and thus better audio quality
- Silicone ear pads in S, M and L for a comfortable and secure fit
- Plug angled at 90° for variable cable guide

White	<b>00132620</b>
Black	<b>00132621</b>
Blue/White	<b>00132618</b>
Blue/Red/White	<b>00132619</b>
Pink/White	<b>00132617</b>
20 BK	



**THOMSON**

## Headphones "EAR3106", In-Ear

Connection	3.5 mm Jack Plug
Material	Plastic Material
Sensitivity	85 dB/ mW
Cable Length	1 m
Speaker Diameter	10 mm
Frequency Range	20 Hz - 20 kHz
Impedance	16 $\Omega$

- Children's sensitive ears are protected by a volume limitation to max. 85 dB according to EN 71-1 standard
- Gold-plated jack plug ensures secure signal transmission and thus better audio quality
- Cable length especially adapted for children
- Cable kink protection of the earphones integrated in the casing
- Size optimized earbuds for children from 8 years of age

Pink/White	00132509
Blue/White	00132508
	6 BK

# Bags & Cases / Headphones

HEADPHONE CASE/ EAR PADS

## Headphone Case



**THOMSON**

### EARA516 Headphones Bag for On-Ear/Over-Ear Headphones

Material	Ethylene Vinyl Acetate (EVA)
<ul style="list-style-type: none"> <li>• Middle part of the bag expands for flexible height adjustment to various head strap widths (up to 7 cm)</li> <li>• With mesh compartment for other accessories, including hook and loop fastener for secure attachment</li> <li>• Made from EVA material for maximum protection during transport</li> <li>• Incl. elastic strap on the inside for secure attachment</li> <li>• Incl. carrying loop</li> <li>• 2-way zip fastener for easy access</li> </ul>	
Black	00132511
	32 HC



**THOMSON**

### EARA506 Headphone Bag for In-Ear Headphones

Material	Ethylene Vinyl Acetate (EVA)
<ul style="list-style-type: none"> <li>• Incl. silicone rewinder</li> <li>• Prevents tangled cables and knots, the cable does not have to be bent</li> <li>• With a mesh compartment for additional accessories</li> <li>• Made of EVA material for maximum protection during transport</li> <li>• Incl. snap hook</li> <li>• 2-way zip for easy access</li> <li>• Zip in headphone style</li> </ul>	
Black	00132510
	96 BK

## Replacement Ear Pad



**THOMSON**

### Replacement Ear Pad "EARA04 Silicone, 6 Pairs"

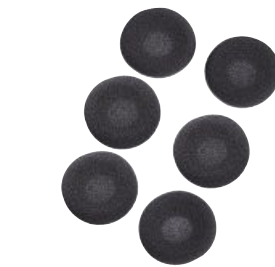
Material	Silicone
Diameter	n/s
<ul style="list-style-type: none"> <li>• Silicone ear pads in S, M and L for a comfortable and secure fit</li> <li>Different colours per size:</li> <li>• S: black/turquoise, M: black/yellow, L: black/orange</li> <li>• S: transparent/turquoise, M: transparent/yellow, L: transparent/orange</li> <li>• Especially suited for Thomson headphones</li> </ul>	
Black	00132459
	6 BK



**THOMSON**

### Replacement Ear Pad "EARA110 Foam, 6 Pieces"

Material	Foam
Diameter	19 mm
<ul style="list-style-type: none"> <li>• Especially suited for Thomson headphones</li> </ul>	
Black	00131488
	10 BK



**THOMSON**

### Replacement Ear Pad "EARA120 Foam, 6 Pieces"

Material	Foam
Diameter	45 mm
<ul style="list-style-type: none"> <li>• For hygienic use of headphones</li> <li>• Outside diameter: 45 mm/inside diameter: 42 mm</li> <li>• Soft foam</li> <li>• Can also be used for headphones of other brands</li> </ul>	
Black	00131492
	10 BK

## Replacement Ear Pad Set



**THOMSON**

### EARA310 BK Silicone Replacement Ear Pads, 6 pieces, black

Set Contents in Pieces	6
<ul style="list-style-type: none"> <li>• Especially suited for Thomson headphones</li> <li>• In 3 different sizes (S, M, L)</li> </ul>	
	00131798
	10 BK

## Hand Microphone



**THOMSON**

### Hand Microphone "M152"

Connection	6.35 mm Jack Plug/ XLR Socket
Directivity	Sub-cardioid
Model	Dynamic
Sensitivity (Micro- phone)	-60dB +/- 3dB dB- SPL (1kHz)
Frequency Range (Microphone)	100 Hz - 10 kHz

- Dynamic shock absorption
- Cable made of oxygen-free copper
- Sturdy XLR plug
- Perfect sound due to the 30 mm membrane

Black	00131598
	8 SC



**THOMSON**

### Hand Microphone "M151"

Connection	6.35 mm Jack Plug/ XLR Socket
Directivity	Sub-cardioid
Model	Mono
Sensitivity (Micro- phone)	-60dB +/- 3dB dB- SPL (1kHz)
Frequency Range (Microphone)	100 Hz - 10 kHz

- Dynamic shock absorption
- Cable made of oxygen-free copper
- Sturdy XLR plug
- Perfect sound due to the 30 mm membrane

Silver	00131597
	8 SC



**THOMSON**

### Hand Microphone "M150"

Connection	3.5 mm Jack Plug
Directivity	Sub-cardioid
Model	Mono
Sensitivity (Micro- phone)	-60dB +/- 3dB dB- SPL (1kHz)
Frequency Range (Microphone)	100 Hz - 10 kHz

- Dynamic shock absorption
- Cable made of oxygen-free copper
- Perfect sound due to the 30 mm membrane
- Cable length of 2,5 m for great freedom of movement

Black	00131596
	8 SC



**THOMSON**

### Hand Microphone "M135"

Connection	3.5 mm Jack Plug
Directivity	Uni-directional
Model	Mono
Sensitivity (Micro- phone)	-76 dB-SPL (1kHz)
Frequency Range (Microphone)	70 Hz - 13 kHz

- Dynamic shock absorption
- Perfect sound due to the 30 mm membrane
- Unidirectional design only picks up the speaker's voice

Black	00131592
	10 SC



**THOMSON**

### Hand Microphone "M135D"

Connection	3.5 mm Jack Plug
Directivity	Uni-directional
Model	Dynamic
Sensitivity (Micro- phone)	-76 dB-SPL (1kHz)
Frequency Range (Microphone)	70 Hz - 13 kHz

- Dynamic shock absorption
- Perfect sound due to the 30 mm membrane
- Unidirectional design only picks up the speaker's voice

Black	00131772
	10 SC





**THOMSON**

*TV/HIFI*



# Input Device

## Remote Control



**THOMSON**

### ROC3506 4in1 Universal Smart TV Remote Control for Samsung, STB, Audio, PC

Signal Transmission	2.4 GHz/Infrared
Battery Type	Micro AAA
Range	ca. 8-10 m
Line	n/s
Model	n/s

- Immediately ready for use as the code is preset for the most common Samsung TVs (other codes adjustable for less common Samsung models)
- With Samsung specific special buttons for the field of TV

Black	00132698
6 SC	



**THOMSON**

### ROC3506 4in1 Universal Smart TV Remote Control for LG, STB, Audio, PC

Signal Transmission	2.4 GHz/Infrared
Battery Type	Micro AAA
Range	ca. 8-10 m
Line	n/s
Model	n/s

- Immediately ready for use as the code is preset for the most common LG TVs (other codes adjustable for less common LG models)
- With LG specific special buttons for the field of TV

Black	00132699
6 SC	



**THOMSON**

### ROC3506 4in1 Universal Smart TV Remote Control for Panasonic, STB, Audio, PC

Signal Transmission	2.4 GHz/Infrared
Battery Type	Micro AAA
Range	8 m
Line	n/s
Model	n/s

- High-precision multi-touchpad allows easy and intuitive navigation through menus and the Internet via gesture control
- Light and slim shape for particularly easy transport to other rooms

Black	00132702
6 SC	



**THOMSON**

### ROC3506 4in1 Universal Smart TV Remote Control for Philips, STB, Audio, PC

Signal Transmission	2.4 GHz/Infrared
Battery Type	Micro AAA
Range	ca. 8-10 m
Line	n/s
Model	n/s

- Immediately ready for use as the code is preset for the most common Philips TVs (other codes adjustable for less common Philips models)
- With Philips specific special buttons for the field of TV

Black	00132701
6 SC	



**THOMSON**

### ROC3506 4in1 Universal Smart TV Remote Control for Sony, STB, Audio, PC

Signal Transmission	2.4 GHz/Infrared
Battery Type	Micro AAA
Range	ca. 8-10 m
Line	n/s
Model	n/s

- Immediately ready for use as the code is preset for the most common Sony TVs (other codes adjustable for less common Sony models)
- With Sony specific special buttons for the field of TV

Black	00132700
6 SC	



**THOMSON**

### Remote Control "ROC2411"

Signal Transmission	Infrared
Battery Type	Micro AAA
Range	16 m
Line	ROCx411
Model	n/s

- 2 control levels: TV/SAT-STB
- Pre-programmed for all TV brands and sets which are available in Europe
- Learn and macro function
- Backlight for device buttons, Prog +/- buttons and Vol +/- buttons

Black	00131897
6 BK	



**THOMSON**

### Remote Control "ROC4411"

Signal Transmission	Infrared
Battery Type	Micro AAA
Range	16 m
Line	ROCx411
Model	n/s

- 4 control levels: TV/DVD/SAT-STB/AMP
- Pre-programmed for all TV brands and sets which are available in Europe
- Learn and macro function
- Backlight for device buttons, Prog +/- buttons and Vol +/- buttons

Black	00131898
6 BK	



**THOMSON**

### Remote Control "ROC2303"

Signal Transmission	Infrared
Battery Type	CR2032
Range	8 m
Line	ROC2303
Model	n/s

- Ideal for senior citizens due to the large buttons with a special grip
- Silicone cover for a better grip and protection from shocks, helps avoid scratches on the remote control or table

Black	00131818
6 BK	

REMOTE CONTROL



**THOMSON**

## Remote Control "ROC1128LG for LG TVs"

Signal Transmission	Infrared
Battery Type	Micro AAA
Range	10 m
Line	ROC1128
Model	n/s

- Ready for instant use as the code is already present for the most common LG televisions
- Further codes adjustable for less common LG models
- Manufacturer-specific special keys
- Including learning function to teach further functions

Black	00132674
	6



**THOMSON**

## Remote Control "ROC1128PHI for Philips TVs"

Signal Transmission	Infrared
Battery Type	Micro AAA
Range	10 m
Line	ROC1128
Model	n/s

- Ready for instant use as the code is already present for the most common Philips televisions
- Further codes adjustable for less common Philips models
- Manufacturer-specific special keys
- Including learning function to teach further functions

Black	00132676
	6



**THOMSON**

## Remote Control "ROC1128SON for Sony TVs"

Signal Transmission	Infrared
Battery Type	Micro AAA
Range	10 m
Line	ROC1128
Model	n/s

- Ready for instant use as the code is already present for the most common Sony televisions
- Further codes adjustable for less common Sony models
- Manufacturer-specific special keys
- Including learning function to teach further functions

Black	00132675
	6



**THOMSON**

## Remote Control "ROC Z107 2in1, Zapper"

Signal Transmission	Infrared
Battery Type	Micro AAA
Range	10 m
Line	ROC Z107
Model	n/s

- Universal remote control for controlling up to 2 devices
- Pre-programmed for a range of modern devices (including from LG, Sony, Samsung, Sharp, Panasonic and Philips)
- Including learning function to teach further functions

Black	00132672
	6 BK



**THOMSON**

## Remote Control "ROC1128PAN for Panasonic TVs"

Signal Transmission	Infrared
Battery Type	Micro AAA
Range	10 m
Line	ROC1128
Model	n/s

- Ready for instant use as the code is already present for the most common Panasonic televisions
- Further codes adjustable for less common Panasonic models
- Manufacturer-specific special keys
- Including learning function to teach further functions

Black	00132677
	6



**THOMSON**

## Remote Control "ROC1128SAM for Samsung TVs"

Signal Transmission	Infrared
Battery Type	Micro AAA
Range	10 m
Line	ROC1128
Model	n/s

- Ready for instant use as the code is already present for the most common Samsung televisions
- Further codes adjustable for less common Samsung models
- Manufacturer-specific special keys
- Including learning function to teach further functions

Black	00132673
	6



**THOMSON**

## Remote Control "ROC1117GRU for Grundig TVs"

Signal Transmission	Infrared
Battery Type	Micro AAA
Range	10 m
Line	ROC1117
Model	n/s

- Immediately ready for use, since the code for the most common Grundig TVs is already pre-set
- Other codes can be set for less common Grundig models
- Manufacturer-specific special keys
- Including learning function to teach further functions

Black	00132671
	6 BK



**THOMSON**

## Remote Control "ROC Z907 Garage Door Remote"

Signal Transmission	Wireless
Battery Type	n/s
Range	40 m
Line	ROC Z907
Model	n/s

- Suitable for use with a wide range of garage and exterior gate drives
- For upgrading systems with fixed or rolling codes in the frequency range from 433 MHz and 868 MHz

Black	00132680
	10

REMOTE CONTROL

# Holders

## Television Wall Bracket

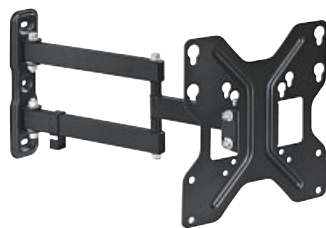


**THOMSON**

**WAB2565 TV Wall Mount, VESA 400x400, tilt./swivel., 2 arms, 58 to 142 cm**

Quality	n/s
Rotation	6 °
Swivel Range	180 °
Tilt +/-	10 / 20 °
Maximum Load Capacity	50 kg
VESA (from-to)	200x200 - 400x400
Recommended Screen Size	81 - 165 cm (32" - 65")
Version	Fullmotion

- With integrated cable management
- Spirit level for easy installation included
- For all screens up to VESA 400x400
- Tilt and swivel design, tilt range: +10/-20°, swivel range: 180°



**THOMSON**

**WAB846 TV Wall Mount, VESA 200x200, tilting/swivelling, 2 arms, 48 - 122 cm**

Quality	n/s
Rotation	3 °
Swivel Range	180 °
Tilt +/-	15 / 15 °
Maximum Load Capacity	20 kg
VESA (from-to)	75x75 - 200x200
Recommended Screen Size	48 - 122 cm (19" - 48")
Version	Move

- With integrated cable management
- For all screens up to VESA 200x200
- Tilt and swivel design, tilt range: +/-15°, can be swivelled by 180° on three joints and two carrier arms
- With keyhole suspension for easy attachment of the TV



**THOMSON**

**WAB746 TV Wall Bracket, VESA 200x200, move, 1 Arm**

Quality	n/s
Rotation	3 °
Swivel Range	180 °
Tilt +/-	15 / 15 °
Maximum Load Capacity	20 kg
VESA (from-to)	75x75 - 200x200
Recommended Screen Size	48 - 122 cm (19" - 48")
Version	Move

- With integrated cable management
- For all screens up to VESA 200x200
- Inclunable and swivel version, can be inclined by up to +/- 15° and swivelled by up to 180°
- With keyhole mounting for easy attachment of the TV



**THOMSON**

**WAB646 TV Wall Mount, VESA 200x200, tilt**

Quality	n/s
Rotation	0 °
Swivel Range	0 °
Tilt +/-	15 / 15 °
Maximum Load Capacity	30 kg
VESA (from-to)	50x50 - 200x200
Recommended Screen Size	48 - 122 cm (19" - 48")
Version	Tilt

- For all screens up to VESA 200x200
- Spirit level for accurate installation included
- Tilt design, tilt range: +15/-15°

WALL MOUNTS

Black				<b>00132411</b>
	4	SC		

Black				<b>00132401</b>
	10	SC		

Black				<b>00132400</b>
	10	SC		

Black				<b>00132032</b>
	10	SC		





**THOMSON**

**WAB156 TV Wall Mount,  
VESA 400x400, tilt**

Quality	n/s
Rotation	0 °
Swivel Range	0 °
Tilt +/-	15 / 15 °
Maximum Load Capacity	50 kg
VESA (from-to)	50x50 - 400x400
Recommended Screen Size	81 - 165 cm (32" - 65")
Version	Tilt

- For all screens up to VESA 400x400
- Tilttable, tilt range: +15/-15°
- Spirit level for accurate installation included



**THOMSON**

**WAB175 TV Wall Mount,  
VESA 600, tilt**

Quality	n/s
Rotation	0 °
Swivel Range	0 °
Tilt +/-	15 / 15 °
Maximum Load Capacity	50 kg
VESA (from-to)	50x50 - 600x400
Recommended Screen Size	94 - 190 cm (37" - 75")
Version	Tilt

- For all screens up to VESA 600x400
- Spirit level for accurate installation included
- Tilt design, tilt range: +15/-15°



**THOMSON**

**WAB546 TV Wall Mount,  
VESA 200x200, fix**

Quality	n/s
Rotation	0 °
Swivel Range	0 °
Tilt +/-	0 / 0 °
Maximum Load Capacity	30 kg
VESA (from-to)	50x50 - 200x200
Recommended Screen Size	48 - 122 cm (19" - 48")
Version	Fix

- For all screens up to VESA 200x200
- Spirit level for accurate installation included



**THOMSON**

**WAB056 TV Wall Mount,  
VESA 400x400, fix**

Quality	n/s
Rotation	0 °
Swivel Range	0 °
Tilt +/-	0 / 0 °
Maximum Load Capacity	50 kg
VESA (from-to)	50x50 - 400x400
Recommended Screen Size	81 - 165 cm (32" - 65")
Version	Fix

- For all screens up to VESA 400x400
- Spirit level for accurate installation included

Black	00132034
Qty	8
PT	SC

Black	00132403
Qty	6
PT	SC

Black	00132031
Qty	10
PT	SC

Black	00132033
Qty	8
PT	SC



THOMSON

WAB075 TV Wall Mount, VESA 600, fix

Quality	n/s
Rotation	0 °
Swivel Range	0 °
Tilt +/-	0 / 0 °
Maximum Load Capacity	50 kg
VESA (from-to)	50x50 - 600x400
Recommended Screen Size	94 - 190 cm (37" - 75")
Version	Fix

- For all screens up to VESA 600x400
- Spirit level for easy installation included



THOMSON

WAB2427 "Single U" TV wall bracket, VESA 200x200, fixed, 48 to 122 cm

Quality	n/s
Rotation	0 °
Swivel Range	0 °
Tilt +/-	0 / 0 °
Maximum Load Capacity	25 kg
VESA (from-to)	100x100 - 200X200
Recommended Screen Size	48 - 122 cm (19" - 48")
Version	Fix

- For all monitors up to VESA 200x200
- With keyhole mount for simple attachment of the TV



THOMSON

WAB2437 „Single U" TV wall bracket, VESA 400x400, fixed, 81 to 165 cm

Quality	n/s
Rotation	0 °
Swivel Range	0 °
Tilt +/-	0 / 0 °
Maximum Load Capacity	30 kg
VESA (from-to)	100x100 - 400x400
Recommended Screen Size	81 - 165 cm (32" - 65")
Version	Fix

- For all monitors up to VESA 400x400
- With keyhole mount for simple attachment of the TV

Black	00132402
6	SC

Black	00132413
24	SC

Black	00132414
24	SC

WALL MOUNTS





Made and distributed by  
Hama GmbH & Co KG  
Dresdner Str. 9, 86653  
Monheim / Germany  
[www.thomson-av-accessories.eu](http://www.thomson-av-accessories.eu)

Thomson is a trademark of Technicolor or its affiliates  
used under license to Hama GmbH & Co KG.  
All rights reserved.

Printed in Germany.

