

PICTURE WORLD

June 2017



Brand Overview

hama®

item no. item number

item no. novelty

size specifications:
W x D x H
(width x depth x height)

Qty quantity

MB minimum order quantity

PT packaging type

BC blister size

PO polybag

CB packed in cardboard box

BA banderol

HT hangtag

HC hangcard

PICTURE FRAMES	Portrait Frames	8	Plastic Frame	48
	Portrait Frames "Kids Collection"	19	Passepartout	71
	Aluminium Picture Frame	21	Picture Tabs	76
	Wood Picture Frame	26		
PICTURE HOLDER	Clip Fix	79	Photo Gimmicks	86
PHOTO ALBUMS	Ticklers	90	Holiday Albums	142
	Motif Albums	94	Ring Albums	146
	Baby/Child	115	Creative Accessories	154
	Wedding Albums	132		



= minimum order quantity
 = novelty

BC = blister size
 HT = hangtag
 CB = packed in cardboard box

PO = polybag
 BA = banderol

Picture Frames



PICTURE FRAMES



Picture frames made by Hama

In-house production facilities in Syrovice, Czech Republic

Since 1998, we have been producing picture frames in our own factory in Syrovice. On a total area of 58,000 m², we make all types of frames in a variety of designs and colours. These products are developed in collaboration with our trade partners.

The manufacturing process has developed well over the years, and today 140 staff members are able to produce up to 100,000 frames per week working in shifts. We are constantly developing new creative concepts, designs and production techniques for a diverse and high-quality range of frames.

We guarantee:

- State-of-the-art production methods
- Highest standards of quality
- Maximum precision

Your benefits:

- Tailored production scheduling
- Flexible and prompt delivery
- Continuous quality assurance



An overview of our production process in Syrovice



Warehouse
Around 230 different frame profiles are stored in this 1100 m² warehouse.



Backing board saw
With this saw it is possible to mass-produce backing boards of every size.



Frame saws
Here the frame sections can be cut to any size.



Staining
The frame sections and their sawn edges are stained by hand to avoid untreated surfaces being exposed when the frame is assembled.



Fixing easy clips
Easy Clips are mounted manually onto the backing board with a riveting machine.



Finishing
The frames are completed by the addition of their backing boards at several workstations.



Shrink wrapping
Since production began, around 59 million completed frames have been packaged using three shrink wrap machines.



Storehouse
Before being shipped to the customer, picture frames are stored in an area covering 2200 m². Glass panels, packaging material and other inputs are also kept here.





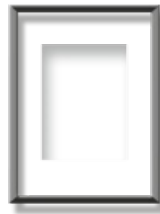
Quality in detail

Easy handling is one of the most important features of first-class products. Customer-oriented product solutions and effortless handling reflect many years of experience, special know-how and love for details. Photos can e.g. easily be changed and the wall mounting will hold – guaranteed!

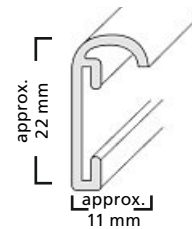
Symbols and their meaning



Frame format



Picture format



Border profile description



The 100% guarantee for optimal wall attachment. Heavy load mount for all large formats including mounting template



Precision mitre thanks to durable gluing and additional metal connectors as well as manual colouring of the sectional areas of all wooden frames



Pre-punched, self-explanatory insert.
Sales without words



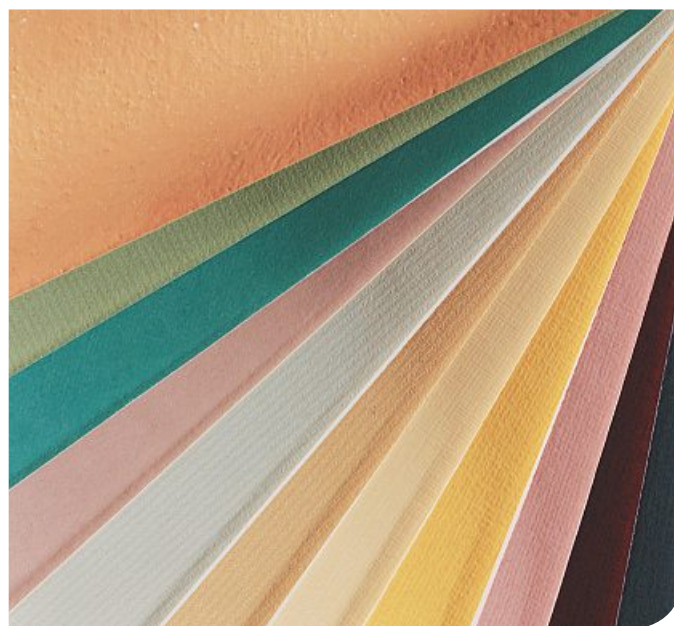
Round ground,
quality washed glass



Hama EasyClip. Framing can be this easy.
The ingenious closure system. Press and push



Additional inlay for digital formats (see table)



Large selection of mounts in all common formats and trendy colours. Superior quality thanks to acid-free cardboard with a thickness of 1.4 mm

Portrait Frame

Portrait Frame

8

Portrait Gallery

Picture Frame

16

Portrait Frame

PICTURE FRAMES





"Anaheim" Portrait Frame

Material	Metal
Colour	Silver

- You can have the frame standing up or hang it on the wall in portrait and landscape format
- Slim, shiny silver frame that creates a stylish setting for your photo

10 x 15 cm			085975
	12	CB	
13 x 18 cm			085976
	6	CB	
15 x 20 cm			085977
	6	CB	



"Arles" Portrait Frame

Material	Metal
Colour	Silver

- You can have the frame standing up or hang it on the wall in portrait and landscape format
- With stand
- High-quality velvet back panel

10 x 15 cm			069717
	12	CB	
13 x 18 cm			069718
	12	CB	
15 x 20 cm			069719
	12	CB	



"Avignon" Portrait Frame,

Material	Metal
Colour	Silver

- Shiny silver portrait frame with an embossed border on the inside and outside
- The unobtrusive design brings out the portrait to advantage

15 x 20 cm			057997
	6	CB	



"Basel" Mini Frames, 6x8 cm

Material	Metal
Colour	Silver

- Stylish portrait frame
- With stand
- Can be set up in portrait and landscape format
- High-quality velvet back panel
- An optical highlight that makes your photos stand out

6 x 8 cm			057450
	12	CB	



"Bern" Portrait Frame

Material	Metal
Colour	Rose Gold

- Rose gold portrait frame with an unobtrusive design
- With a stand and a picture hook

15 x 20 cm			065782
	6	CB	



"Bern" Portrait Frame

Material	Metal
Colour	Silver

- Silver portrait frame with an unobtrusive design
- With a stand and a picture hook

10 x 15 cm			061388
	12	CB	
13 x 18 cm			061389
	6	CB	
15 x 20 cm			061390
	6	CB	



"Bristol" Portrait Frame

Material	Metal
Colour	Silver

- Stylish portrait frame
- With stand
- Can be hung up in portrait format
- High-quality velvet back panel

10 x 15 cm			063772
	12	CB	
13 x 18 cm			063773
	12	CB	
15 x 20 cm			063774
	12	CB	



"Bristol" Portrait Frame

Material	Metal
Colour	Champagne

- Stylish portrait frame
- With stand
- Can be hung up in portrait format
- High-quality velvet back panel
- Classic design that makes your photo stand out

10 x 15 cm			063802
	12	CB	
13 x 18 cm			063803
	12	CB	

= minimum order quantity
 = novelty

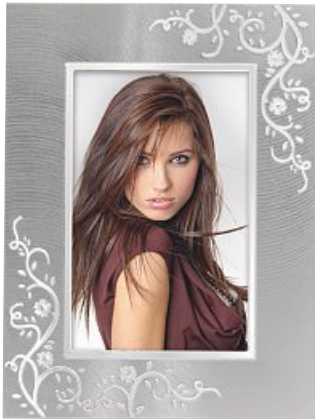
BC = blister size
 HT = hangtag
 CB = packed in cardboard box

PO = polybag
 BA = banderol

Portrait Frame



PICTURE FRAMES



"Bruegge" Portrait Frame

Material	Metal
Colour	Silver

- Stylish portrait frame with silver flower ornaments
- With stand
- Can be set and hung up in landscape and portrait format

10 x 15 cm	063917
6 CB	
13 x 18 cm	063918
6 CB	
15 x 20 cm	063920
6 CB	



"Cairns" Portrait Frame

Material	Metal
Colour	Titanium

- Stylish portrait frame
- With stand
- Can be set and hung up in portrait and landscape format
- High-quality velvet back panel
- Two-tone titanium

10 x 15 cm	065889
6 CB	
13 x 18 cm	065890
6 CB	

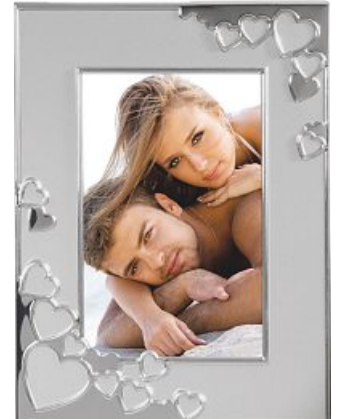


"Cape Coral" Portrait Frame

Material	Metal
Colour	White

- White portrait frame with glossy silver elements and hearts
- You can have the frame standing up or hung it on the wall in portrait and landscape format
- Gives the photos of your loved ones a very special touch

10 x 15 cm	057998
6 CB	
13 x 18 cm	057999
6 CB	



"Cape Coral" Portrait Frame

Material	Metal
Colour	Silver

- Matt silver portrait frame with glossy silver elements and hearts
- You can have the frame standing up or hung it on the wall in portrait and landscape format

10 x 15 cm	057878
6 CB	
13 x 18 cm	057879
6 CB	



"Cardiff" Portrait Frame

Material	Metal
Colour	Silver

- Stylish portrait frame
- With stand
- Can be set and hung up in portrait and landscape format

10 x 15 cm	063815
12 CB	
13 x 18 cm	063816
12 CB	
15 x 20 cm	063817
6 CB	



"Davos" Portrait Frame

Material	Metal
Colour	Silver

- Stylish portrait frame
- With stand and hanger
- Can be set and hung up in portrait and landscape format
- High-quality velvet back panel

10 x 15 cm	065198
12 CB	
13 x 18 cm	065199
6 CB	
15 x 20 cm	065513
6 CB	

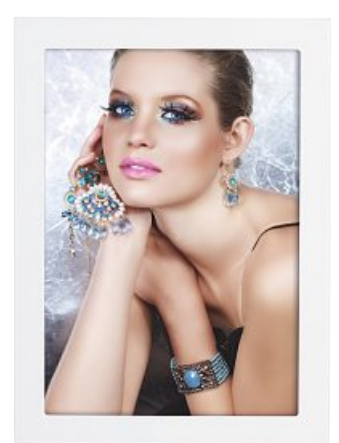


"Davos" Portrait Frame

Material	Metal
Colour	Gold

- Stylish portrait frame with an unobtrusive design
- With a stand and a picture hook
- You can have the frame standing up or hang it on the wall in portrait and landscape format
- High-quality velvet back panel

10 x 15 cm	065377
12 CB	
13 x 18 cm	065378
6 CB	



"Davos" Portrait Frame

Material	Metal
Colour	White

- Stylish portrait frame with an unobtrusive design
- With a stand and a picture hook
- You can have the frame standing up or hang it on the wall in portrait and landscape format
- High-quality velvet back panel

10 x 15 cm	063732
12 CB	
13 x 18 cm	063733
6 CB	

**"Davos" Portrait Frame**

Material	Metal
Colour	Titanium

- Stylish portrait frame with an unobtrusive design
- With a stand and a picture hook
- You can have the frame standing up or hang it on the wall in portrait and landscape format
- High-quality velvet back panel

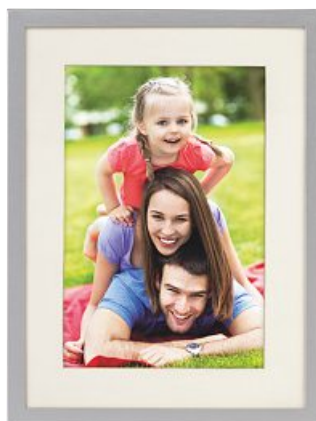
10 x 15 cm		063734
	12 CB	
13 x 18 cm		063735
	6 CB	

**"Fairbanks" Portrait Frame**

Material	Metal
Colour	Silver

- Shiny silver frame with a black base
- Subjacent photo creates a special effect/deep concave profile makes your picture stand out
- You can have the frame standing up or hang it on the wall in portrait and landscape format

10 x 15 cm		066828
	6 CB	
13 x 18 cm		066829
	6 CB	

**"Illinois" Portrait Frame**

Material	Metal
Colour	Silver

- Matt silver picture frame with a white mount
- You can have the frame standing up or hang it on the wall in portrait and landscape format

10 x 15 cm		100734
	12 CB	
13 x 18 cm		100735
	12 CB	
15 x 20 cm		100736
	10 CB	

**"Johannesburg" Portrait Frame**

Material	Metal
Colour	Silver

- Shiny silver portrait frame
- You can have the frame standing up or hang it on the wall in portrait and landscape format
- With a prop

10 x 15 cm		067653
	12 CB	
13 x 18 cm		067654
	10 CB	
15 x 20 cm		067655
	10 CB	

**"Laval" Portrait Frame**

Material	Metal
Colour	Silver

- Stylish, folding double frame
- The single picture frames are connected with each other by two hinges each

2x 10 x 15 cm		065346
	6 CB	
2x 13 x 18 cm		065347
	6 CB	

**"Laval" Portrait Frame**

Material	Metal
Colour	Silver

- Stylish, folding double frame
- The single picture frames are connected with each other by two hinges each

3x 10 x 15 cm		065348
	6 CB	
3x 13 x 18 cm		065349
	6 CB	

**"Laval" Portrait Frame**

Material	Metal
Colour	Silver

- Matt silver picture frame
- You can have the frame standing up in portrait and landscape format
- An optical highlight that will make your photos stand out

10 x 15 cm		100737
	6 CB	
13 x 18 cm		100738
	6 CB	
15 x 25 cm		100739
	6 CB	

**"Lillehammer" Portrait Frame**

Material	Metal
Colour	Silver

- Shiny silver portrait frame with a truffle coloured wooden inlay
- You can have the frame standing up or hang it on the wall in portrait and landscape format

15 x 20 cm		068902
	6 CB	

= minimum order quantity
 = novelty

BC = blister size
 HT = hangtag
 CB = packed in cardboard box

PO = polybag
 BA = banderol

Portrait Frame



PICTURE FRAMES

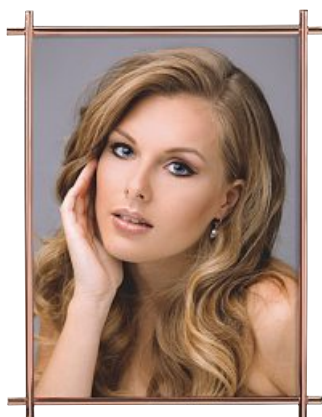


"Miramar" Portrait Frame

Material	Metal
Colour	Silver

- Stylish silver portrait frame
- With a prop
- You can have the frame standing up in portrait and landscape format
- The frame can also be hung on the wall in portrait format
- High-quality velvet panel

10 x 15 cm		069783
	12 CB	
13 x 18 cm		069784
	12 CB	



"Miramar" Portrait Frame

Material	Metal
Colour	Rose Gold

- Stylish rose gold portrait frame
- With a prop
- You can have the frame standing up in portrait and landscape format
- The frame can also be hung on the wall in portrait format
- High-quality velvet panel

10 x 15 cm		069788
	12 CB	
13 x 18 cm		069789
	12 CB	



"Montpellier" Portrait Frame

Material	Metal
Colour	Silver

- You can have the frame standing up or hang it on the wall in portrait and landscape format
- Striking, shiny silver frame that creates a stylish setting for your photo

10 x 15 cm		085973
	6 CB	
13 x 18 cm		085974
	6 CB	



"Nantes" Portrait Frame

Material	Metal
Colour	Silver

- Stylish portrait frame with silver inner edge
- With stand
- Can be set and hung up in portrait and landscape format

10 x 15 cm		065406
	6 CB	
13 x 18 cm		065407
	6 CB	
15 x 20 cm		065408
	6 CB	

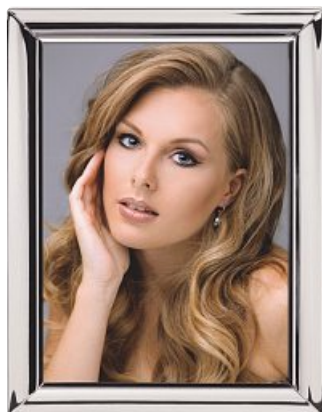


"Nantes" Portrait Frame

Material	Metal
Colour	Silver

- You can have the frame standing up or hang it on the wall in portrait and landscape format
- Wide, shiny silver frame that creates a stylish setting for your photo

10 x 15 cm		069977
	6 CB	
13 x 18 cm		069978
	6 CB	
15 x 20 cm		069979
	6 CB	



"Nizza" Portrait Frame

Material	Metal
Colour	Silver

- Stylish silver portrait frame
- With a prop
- You can have the frame standing up or hang it on the wall in portrait and landscape format

10 x 15 cm		069600
	12 CB	
15 x 20 cm		069602
	10 CB	



"Philadelphia" Portrait Frame

Material	Metal
Colour	Silver

10 x 15 cm		062907
	12 CB	
13 x 18 cm		062908
	6 CB	
15 x 20 cm		062909
	6 CB	
21 x 29.7 cm		062910
	6 CB	



"Philadelphia" Portrait Frame

Material	Metal
Colour	Silver

- Mat silver picture frame with shiny silver outer and inner edge
- Can be set up in portrait and landscape format
- Can be hung up in portrait and landscape format

2x 10 x 15 cm		062917
	6 CB	
2x 13 x 18 cm		062918
	6 CB	



"Philadelphia" Portrait Frame

Material	Metal
Colour	Silver

- Mat silver picture frame with shiny silver outer and inner edge
- Space for three photos
- Can be set up in portrait format
- Can be hung up in portrait and landscape format

3x 10 x 15 cm		062919
	6 CB	
3x 13 x 18 cm		062920
	6 CB	



"Philadelphia" Portrait Frame, horizontal

Material	Metal
Colour	Silver

- Mat silver picture frame with shiny silver outer and inner edge
- Space for three photos
- Can be set up in portrait format
- Can be hung up in portrait and landscape format

2x 10 x 15 cm		063676
	6 CB	
2x 13 x 18 cm		063677
	6 CB	



"Philadelphia" Portrait Frame, horizontal

Material	Metal
Colour	Silver

- Mat silver picture frame with shiny silver outer and inner edge
- Space for three photos of the size 10 x 15 cm
- Can be set up in landscape format
- Can be hung up in portrait and landscape format

3x 10 x 15 cm		063678
	6 CB	
3x 13 x 18 cm		063679
	6 CB	



"Palm Bay" Portrait Frame

Material	Metal
Colour	Anthracite/Silver

- Matt, anthracite picture frame with a shiny, silver outer and inner edge
- You can have the frame standing up in portrait and landscape format
- High-quality velvet back panel

10 x 15 cm		125555
	12 CB	
13 x 18 cm		125556
	6 CB	



"Rotterdam" Portrait Frame

Material	Metal
Colour	White

- White aluminium frame with a shiny, silver inner edge
- You can hang the frame on the wall or have it standing up in portrait and landscape format

10 x 15 cm		059006
	12 CB	



"Rotterdam" Portrait Frame

Material	Metal
Colour	Silver

- Matt, silver aluminium frame with a shiny, silver inner edge
- You can hang the frame on the wall or have it standing up in portrait and landscape format

10 x 15 cm		059008
	12 CB	



"Tennessee" Portrait Frame

Material	Metal
Colour	Titanium

- Metal portrait frame
- With high-quality velvety back

10 x 10 cm		034778
	6 CB	
15 x 20 cm		034781
	6 CB	



"Tokio" Portrait Frame

Material	Metal
Colour	Silver

- Shiny silver portrait frame
- You can have the frame standing up or hang it on the wall in portrait and landscape format
- With a prop

10 x 15 cm		068160
	12 CB	
13 x 18 cm		068161
	12 CB	
15 x 20 cm		068162
	12 CB	

■ = minimum order quantity
■ = novelty

BC = blister size
HT = hangtag
CB = packed in cardboard box

PO = polybag
BA = banderol

Portrait Frame



PICTURE FRAMES



"Venlo" Portrait Frame

Material	Metal
Colour	Silver

- Silver high-gloss picture frame with groove profile
- You can have the frame standing up or hang it on the wall in portrait and landscape format

10 x 15 cm		069901
	12 CB	
13 x 18 cm		069902
	12 CB	
15 x 20 cm		069904
	10 CB	



"Wales" Portrait Frame

Material	Metal
Colour	White

- White portrait frame in a baroque style
- With unobtrusive ornaments
- You can have the frame standing up or hung it on the wall in portrait and landscape format

10 x 15 cm		059897
	6 CB	
13 x 18 cm		059898
	6 CB	



"Wales" Portrait Frame, heart

Material	Metal
Colour	White

- White, heart-shaped portrait frame in a baroque style
- With unobtrusive ornaments
- You can have the frame standing up
- Baroque lushness creates a refined setting for your photo

7.5 x 7.5 cm		059902
	12 CB	



"Windhoek" Portrait Frame

Material	Metal
Colour	Silver

- Shiny portrait frame with embossing
- You can have the frame standing up or hang it on the wall in portrait and landscape format
- With a prop

15 x 20 cm		035164
	10 CB	



"Cara Mia" Portrait Frame

Material	MDF
Colour	White

- Love as a frame: the "O" in the Love lettering forms the heart-shaped frame
- Gives the photos of your loved ones a personal touch

9 x 10 cm		057567
	12 CB	



"Hamilton" Portrait Frame

Material	MDF
Colour	Espresso

- Portrait frame made of MDF, with silver inner edge
- With high-quality velvety back
- With stand for portrait and landscape format

13 x 18 cm		057664
	6 CB	
15 x 20 cm		057665
	6 CB	

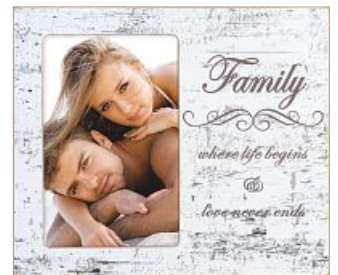


"Home" Portrait Frame

Material	MDF
Colour	White

- Wooden frame for a 10x15 cm photo in portrait format
- Four hooks for hanging up keys and other important objects
- With a clip for notes, shopping lists or another picture
- Can be hung on the wall in portrait format

10 x 15 cm		100419
	6 CB	

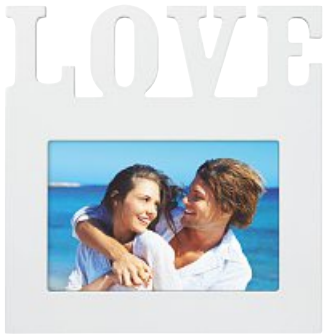


"Juneau" Portrait Frame

Material	MDF
Colour	White

- White portrait frame in vintage style
- You can have the frame standing up or hang it on the wall in portrait format
- Creates a stylish setting for your most beautiful family photos

10 x 15 cm		085959
	6 CB	



"L'Amour" Portrait Frame

Material	MDF
Colour	White

- Portrait frame with "Love" lettering for a 10x15 cm photo in horizontal format
- You can have the frame standing up or hang it on the wall in landscape format
- Romantic design for the most beautiful photos of you and your friend, partner, etc.

10 x 15 cm		100718
	12	CB



"Rockhampton" Portrait Frame

Material	MDF
Colour	Espresso

- Stylish portrait frame
- With stand and hanger
- You can hang the frame on the wall or have it standing up in portrait and landscape format

10 x 15 cm		065832
	6	CB
15 x 20 cm		065833
	6	CB



"Valdez" Portrait Frame

Material	MDF
Colour	Silver

- White MDF frame with an aluminium border in a shiny silver colour
- You can have the frame standing up or hang it on the wall in portrait and landscape format

10 x 15 cm		100714
	6	CB
13 x 18 cm		100715
	6	CB



Acrylic Frame, Upright/ format

Material	Acrylic
Colour	Transparent

- Simple acrylic frame with a great visual effect

9 x 13 cm		063163
	24	PO
10 x 15 cm		063165
	24	PO
13 x 18 cm		063166
	24	PO
21 x 29,7 cm		063267
	6	PO



Acrylic Frame, Horizontal format

Material	Acrylic
Colour	Transparent

- Simple acrylic frame with a great visual effect

9 x 13 cm		063173
	24	PO
10 x 15 cm		063175
	24	PO
13 x 18 cm		063176
	24	PO
21 x 29,7 cm		063268
	6	PO



"Clapper Board" Portrait Frame, acrylic

Material	Acrylic
Colour	Black/White

- Portrait frame in clapper board look
- Black/white design
- With stand

10 x 15 cm		065053
	12	PO



"Filmstrip" Portrait Frame, acrylic

Material	Acrylic
Colour	Black

- Portrait frame in film strip look
- Black-white design
- For three special portrait shots
- For setting up

10 x 15 cm		065064
	12	PO



Portrait Frame "Film", acrylic, vertically bent

Material	Acrylic
Colour	Black

- Portrait frame in film strip look
- Black-white design
- For three special portrait shots
- For setting up

10 x 15 cm		065061
	12	PO

■ = minimum order quantity
■ = novelty

BC = blister size
HT = hangtag
CB = packed in cardboard box

PO = polybag
BA = banderol

Portrait Frame



PICTURE FRAMES



Portrait Frame "Film", acrylic, horizontally bent

Material	Acrylic
Colour	Black

- Portrait frame in film strip look
- Black-white design
- For three special portrait shots
- For setting up

10 x 15 cm	065057
12 PO	

Portrait Frame

8

Portrait Gallery

Picture Frame

16

Portrait Gallery Picture Frame



"St. Louis" Portrait Frame Gallery

Material	MDF
Picture Size	10 x 15 cm
Picture Size 2	9 x 9 cm
Picture Size 3	no specifications
Picture Size 4	no specifications
Colour	Brown/Grey

- Portrait frame gallery with two mounts in white and black
- You can hang it on the wall or have it standing up in portrait and landscape format

	114680
6 CB	



"Baglio" Portrait Frame Gallery

Material	Wood
Picture Size	10 x 15 cm
Picture Size 2	no specifications
Picture Size 3	no specifications
Picture Size 4	no specifications
Colour	Brown/Grey

- Portrait frame with a rustic driftwood look
- For one photo in portrait format and one photo in landscape format
- Can be hung on the wall

	114681
6 CB	



"Sweet Home" Portrait Frame Gallery

Material	MDF
Picture Size	10 x 15 cm
Picture Size 2	10 x 10 cm
Picture Size 3	no specifications
Picture Size 4	no specifications
Colour	Different Colours

- Wooden frame with four hooks for hanging up keys, jackets or other important objects

	100719
6 CB	



"Alexandria" Portrait Frame Gallery

Material	Synthetic Material
Picture Size	10 x 15 cm
Picture Size 2	10 x 10 cm
Picture Size 3	9 x 10 cm
Picture Size 4	no specifications
Colour	White

- Can be hung on the wall in landscape format
- Ideal for photos or treasured shots of your loved ones

	100953
20 CB	



**"Budapest - Family"
Portrait Frame Gallery**

Material	Synthetic Material
Picture Size	10 x 15 cm
Picture Size 2	no specifications
Picture Size 3	no specifications
Picture Size 4	no specifications
Colour	White

- Can be hung on the wall in landscape format
- Ideal for displaying photographs of your family - from your baby to your grandparents

114369	
12	PO



**"Budapest - Friends"
Portrait Frame Gallery**

Material	Synthetic Material
Picture Size	10 x 15 cm
Picture Size 2	no specifications
Picture Size 3	no specifications
Picture Size 4	no specifications
Colour	White

- Can be hung on the wall in landscape format
- Ideal for displaying photographs of your friends around your home

100997	
12	PO



**"Budapest - Home"
Portrait Frame Gallery**

Material	Synthetic Material
Picture Size	10 x 15 cm
Picture Size 2	no specifications
Picture Size 3	no specifications
Picture Size 4	no specifications
Colour	White

- Can be hung on the wall in landscape format
- The ideal frame for displaying photographs around your home

100999	
12	PO



**"Budapest - Love"
Portrait Frame Gallery**

Material	Synthetic Material
Picture Size	10 x 15 cm
Picture Size 2	no specifications
Picture Size 3	no specifications
Picture Size 4	no specifications
Colour	White

- Can be hung on the wall in landscape format
- Ideal for photos or treasured shots of your loved ones

100996	
12	PO



**"Budapest - Memories"
Portrait Frame Gallery**

Material	Synthetic Material
Picture Size	10 x 15 cm
Picture Size 2	no specifications
Picture Size 3	no specifications
Picture Size 4	no specifications
Colour	White

- Can be hung on the wall in landscape format
- For displaying your most cherished photographic memories - from family pictures to holiday snapshots

100998	
12	PO



**"Montreal - Family"
Portrait Frame Gallery**

Material	Synthetic Material
Picture Size	10 x 15 cm
Picture Size 2	10 x 10 cm
Picture Size 3	no specifications
Picture Size 4	no specifications
Colour	White

- Can be hung on the wall in landscape format
- Ideal for displaying photographs of your family - from your baby to your grandparents

100992	
12	CB



**"Montreal - Friends"
Portrait Frame Gallery**

Material	Synthetic Material
Picture Size	10 x 15 cm
Picture Size 2	10 x 10 cm
Picture Size 3	no specifications
Picture Size 4	no specifications
Colour	White

- Can be hung on the wall in landscape format
- Ideal for displaying photographs of your friends around your home

100993	
12	CB



**"Montreal - Home"
Portrait Frame Gallery**

Material	Synthetic Material
Picture Size	10 x 15 cm
Picture Size 2	10 x 10 cm
Picture Size 3	no specifications
Picture Size 4	no specifications
Colour	White

- Can be hung on the wall in landscape format
- The ideal frame for displaying photographs around your home

100995	
12	CB

■ = minimum order quantity
■ = novelty

BC = blister size
HT = hangtag
CB = packed in cardboard box

PO = polybag
BA = banderol

Portrait Frame



PICTURE FRAMES



"Montreal - Love" Portrait Frame Gallery

Material	Synthetic Material
Picture Size	10 x 15 cm
Picture Size 2	10 x 10 cm
Picture Size 3	no specifications
Picture Size 4	no specifications
Colour	White

- Can be hung on the wall in landscape format
- Ideal for photos or treasured shots of your loved ones

		100994
12	CB	



"Prague - Home" Portrait Frame Gallery

Material	Synthetic Material
Picture Size	10 x 15 cm
Picture Size 2	no specifications
Picture Size 3	no specifications
Picture Size 4	no specifications
Colour	White

- Can be hung on the wall in landscape format
- The ideal frame for displaying photographs around your home

		100952
6	CB	



"Venice" Portrait Frame Gallery

Material	Synthetic Material
Picture Size	7 x 7 cm
Picture Size 2	10 x 15 cm
Picture Size 3	no specifications
Picture Size 4	no specifications
Colour	White

- Can be hung on the wall in landscape format
- A large heart for all persons you are close to

		100954
12	CB	

Portrait Frame
Kids Collection
19

Photo Gallery
Picture Frame
Kids Collection
20

Portrait Frame Kids Collection



PICTURE FRAMES

= minimum order quantity
 = novelty

BC = blister size
HT = hangtag
CB = packed in cardboard box

PO = polybag
BA = banderol

June 2017

hama[®]

19

Portrait Frames "Kids Collection"



PICTURE FRAMES



"Colori" Mini Frame, 24 pieces in a display box

Material	Metal
Colour	Different Colours

- Coloured, decorative frames
- Back with black velvet
- Stand
- High-quality velvet back panel
- Display box with 24 square frame in 6 colours

7 x 7 cm	065093
24 CB	



Baby Set "Felix", blue

Material	Metal
Colour	Blue

- Contents of the set:
- One metal frame (photo size: 5 x 8 cm)
- Two caskets (for the first lock and the first tooth)

5 x 8 cm	065090
6 CB	



Baby Set "Hannah", pink

Material	Metal
Colour	Pink

- Contents of the set:
- One metal frame (photo size: 5 x 8 cm)
- Two caskets (for the first lock and the first tooth)

5 x 8 cm	065091
6 CB	



"Nicki" Portrait Frame

Material	MDF
Colour	White

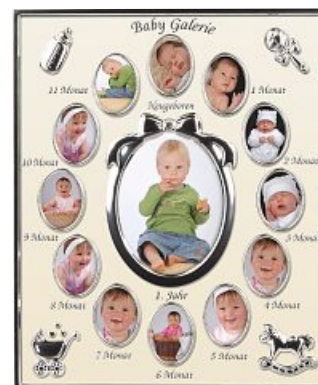
- You can have the frame standing up or hang it on the wall in portrait and landscape format
- Perfect for the first picture of your baby

10 x 15 cm	085939
6 CB	

Portrait Picture Frame
Kids Collection
19

Portrait Gallery
Picture Frame
Kids Collection
20

Portrait Gallery Picture Frame Kids Collection



"Baby Galerie" Portrait Frame

Material	Metal
Picture Size	9 x 13 cm
Picture Size 2	3.5 x 4.5 cm
Colour	Champagne

- Metal gallery frame for pictorial documentation of the first year of one's life
- For 13 photos; twelve small photos (photo size: 3.5 x 4.5 cm) are around a large, central photo (photo size: 9 x 13 cm)

	065133
6 CB	

Aluminium Picture Frame

Aluminium
Picture Frame
21

Aluminium Picture Frame

Chicago	22
Chicago Polystyrene	23
London	24
Manhattan	25



PICTURE FRAMES

■ = minimum order quantity
■ = novelty

BC = blister size
HT = hangtag
CB = packed in cardboard box

PO = polybag
BA = banderol

June 2017

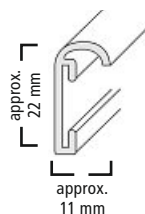
hama[®]

21

Aluminium Picture Frame



PICTURE FRAMES



Aluminium Frame "Chicago"

Border / Width	11 mm
Border / High	22 mm
Max. Thickness of Passepartouts	ca. 1.8 mm

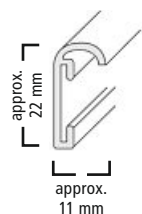
- elegant aluminium frame
- including passepartouts
- round ground, quality washed glass
- precision mitring
- Matt anodized aluminium profile, UV resistant
- Rear with prop up to size 18 x 24 cm
- Rear with heavy-duty hanger from size 40 x 50 cm
- Max. Thickness of Passepartouts: ca. 1.8 mm



Frame Size / cm	Picture size / cm	Gold	Silver	Black	Contrast Grey	Blue	Qty
13 x 18	9 x 13	061006	061036	061066	061096	-	40
15 x 20	10 x 15	061008	061038	061068	061098	061128	30
18 x 24	10 x 15	061009	061039	061069	061099	061129	22
20 x 28	13 x 18	061010	061040	061070	061100	-	15
20 x 30	13 x 18	061011	061041	061071	061101	061131	15
21 x 29.7	15 x 20	061012	061042	061072	061102	-	15
24 x 30	15 x 20	061013	061043	061073	061103	-	13
28 x 35	18 x 24	-	061044	-	-	061134	10
30 x 40	20 x 28	061015	061045	061075	061105	-	15
30 x 45	20 x 30	061016	061046	061076	061106	061136	15
40 x 50	28 x 35	061017	061047	061077	061107	061137	122
40 x 60	30 x 45	061018	061048	061078	061108	061138	102
50 x 60	30 x 40	061019	061049	061079	061109	-	77
50 x 70	30 x 45	061020	061050	061080	061110	-	65
60 x 80	40 x 60	061022	061052	061082	061112	-	48
70 x 100	50 x 70	061024	061054	061084	061114	-	28



with a polystyrene disc



Aluminium Frame "Chicago Polystyrene"

Border / Width	11 mm
Border / High	22 mm
Max. Thickness of Passepartouts	ca. 1.8 mm

- The frame features an ultra-breakproof polystyrene disc (thickness: 1 mm) and is therefore ideal for kindergartens, schools and hospitals- elegant aluminium frame
- including passepartouts
- precision mitring
- Matt anodized aluminium profile, UV resistant
- Rear with heavy-duty hanger from size 40 x 50 cm
- Max. Thickness of Passepartouts: ca. 1.8 mm



Frame Size / cm	Picture size / cm	Silver	Qty
21 x 29.7	15 x 20	063725	15
29.7 x 42	18 x 24	063726	15
40 x 50	28 x 35	063727	35
40 x 60	28 x 35	063728	25
50 x 70	30 x 45	063729	65
60 x 80	40 x 60	063730	48
70 x 100	50 x 70	063731	28

■ = minimum order quantity
■ = novelty

BC = blister size
HT = hangtag
CB = packed in cardboard box

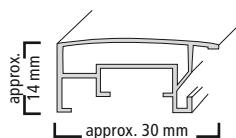
PO = polybag
BA = banderol

Aluminium Picture Frame



PICTURE FRAMES

with a premium mount



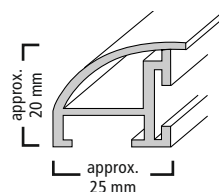
"London" Aluminium Frame

Border / Width	approx. 30 mm
Border / High	approx. 14 mm
Max. Thickness of Passepartouts	approx. 1.4 mm

- Elegant aluminium frame for a stylish atmosphere
- Incl. Premium mount
- Rear with prop up to size 15 x 20 cm
- Rear with heavy-duty hanger from size 40 x 40 cm



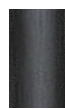
Frame Size / cm	Picture size / cm	Gold	Silver	Contrast Grey	Black	Qty
13 x 18	9 x 13	084900	084910	084920	084930	12
15 x 20	10 x 15	-	084911	084921	084931	12
20 x 30	13 x 18	084902	084912	084922	084932	12
30 x 40	20 x 28	-	084914	084924	084934	6
40 x 50	28 x 35	-	084916	084926	084936	6
50 x 70	30 x 45	-	084918	084928	084938	5
60 x 80	40 x 60	-	084919	084929	084939	4



Aluminium Frame "Manhattan"

Border / Width	approx. 25 mm
Border / High	approx. 20 mm
Max. Thickness of Passepartouts	approx. 1.8 mm

- elegant aluminium frame
- including prepunched passepartouts
- round ground, quality washed glass
- precision mitring
- including heavy load mount with mounting template
- Matt anodized aluminium profile, UV resistant
- Rear with prop up to size 18 x 24 cm
- Rear with heavy-duty hanger from size 40 x 50 cm



Frame Size / cm	Picture size / cm	Silver	Black	Contrast Grey	Qty
13 x 18	9 x 13	061216	061246	061276	23
15 x 20	10 x 15	061218	061248	061278	26
18 x 24	10 x 15	061219	061249	061279	17
20 x 30	13 x 18	061221	061251	061281	11
30 x 40	20 x 28	061225	061255	061285	16
30 x 45	20 x 30	061226	061256	061286	16
40 x 50	28 x 35	061227	061257	061287	97
40 x 60	30 x 45	061228	061258	061288	89
50 x 60	30 x 40	061229	061259	061289	81
50 x 70	30 x 45	061230	061260	061290	69
60 x 80	40 x 60	061232	061262	061292	52
70 x 100	50 x 70	061234	061264	061294	31

■ = minimum order quantity
■ = novelty

BC = blister size
 HT = hangtag
 CB = packed in cardboard box

PO = polybag
 BA = banderol

Wood Picture Frame



PICTURE FRAMES

Wood Picture Frame

26

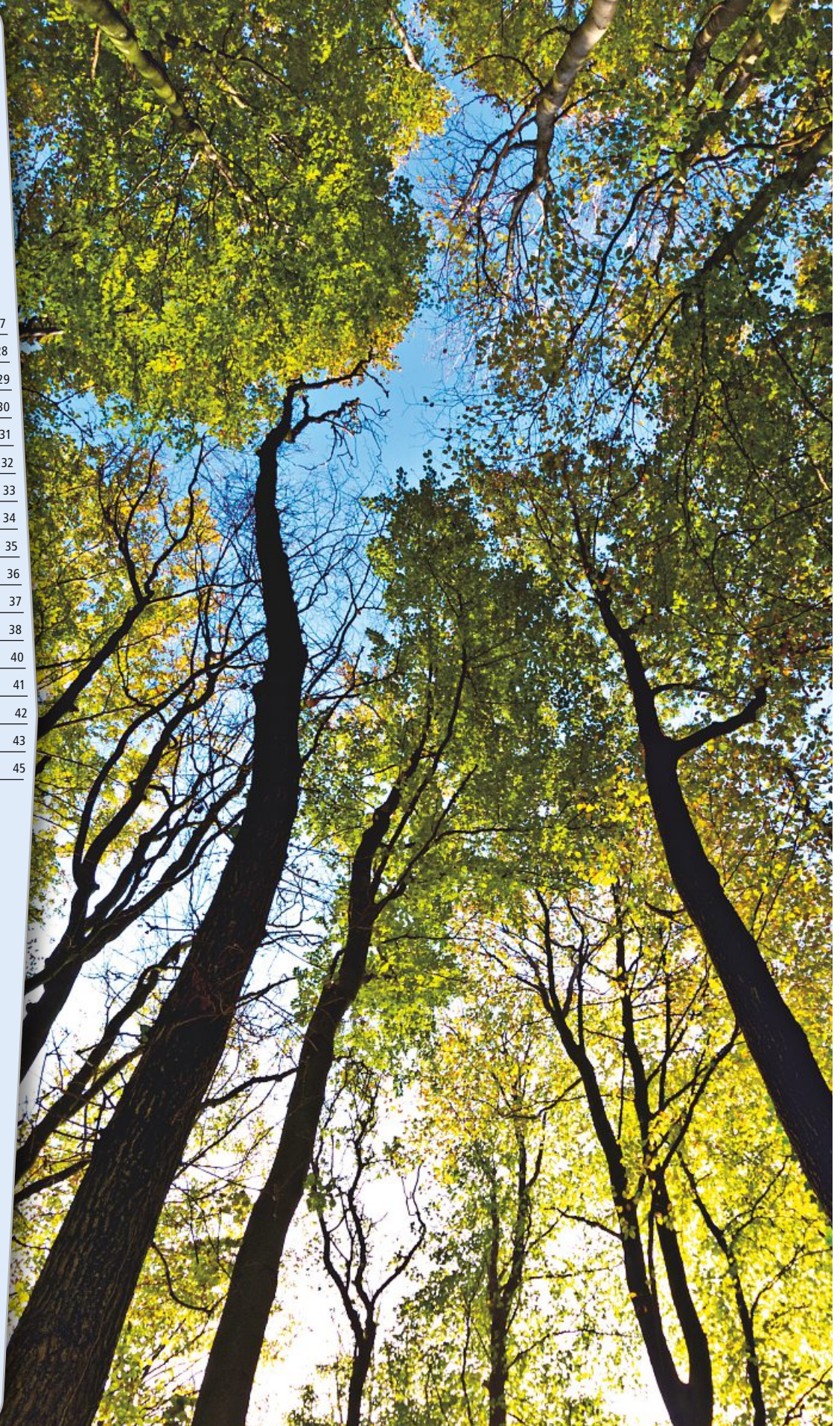
Photo Gallery

Picture Frame

46

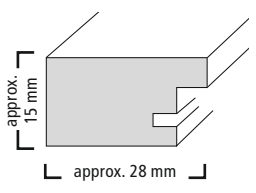
Wood Picture Frame

Barchetta	27
Bella	28
Bellina	29
Candy	30
Dana	31
Florida	32
Giulia	33
Idaho	34
Iowa	35
Lahti	36
Nordic	37
Oregon	38
Oregon Broad	40
Perla	41
Rhodes	42
Riga	43
Vélo	45





with a premium mount



"Barchetta" Wooden Frame

Border / Width	28 mm
Border / High	approx. 15 mm
Max. Thickness of Passepartouts	approx. 1.8 mm

- Wooden frame with a roughened surface
- High-quality glass
- With a premium mount
- Precision mitre
- Rear with prop up to size 15 x 20 cm
- Rear with heavy-duty hanger from size 30 x 40 cm



Frame Size / cm	Picture size / cm	White	Grey	Black	Light Brown	Qty
10 x 15	7 x 10	114544	114550	114556	114562	72
13 x 18	9 x 13	114545	114551	114557	114563	48
15 x 20	10 x 15	114546	114552	114558	114564	30
20 x 30	13 x 18	114547	114553	114559	114565	24
30 x 40	20 x 28	114548	114554	114560	114566	12
40 x 50	28 x 35	114549	114555	114561	114567	8

= minimum order quantity
 = novelty

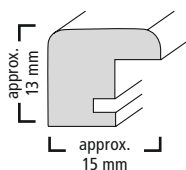
BC = blister size
 HT = hangtag
 CB = packed in cardboard box

PO = polybag
 BA = banderol

Wood Picture Frame



PICTURE FRAMES



"Bella" Wooden Frame

Border / Width	15 mm
Border / High	approx. 13 mm
Max. Thickness of Passepartouts	not for mounts

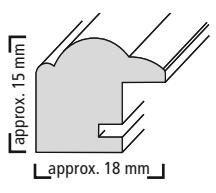
- Natural wooden frame
- High-quality glass
- Precision mitre
- With stand and hanger
- Rear with prop up to size 15 x 20 cm
- Hung up with rotating clamp fastener



Frame Size / cm	Picture size / cm	Nature	Nut	Blue	Red	Qty
10 x 15	7 x 10	031648	031653	031658	031663	48
13 x 18	9 x 13	031649	031654	031659	031664	48
15 x 20	10 x 15	031650	031655	031660	031665	24
20 x 30	13 x 18	031651	031656	031661	031666	36
30 x 40	20 x 28	031652	031657	031662	031667	12



Frame Size / cm	Picture size / cm	Gold	Silver	Black	White	Qty
10 x 15	7 x 10	031668	031673	031678	031692	48
13 x 18	9 x 13	031669	031674	031679	031693	48
15 x 20	10 x 15	031670	031675	031680	031694	24
20 x 30	13 x 18	031671	031676	031681	031695	36
30 x 40	20 x 28	031672	031677	031682	031696	12



"Bellina" Wooden Frame

Border / Width	approx. 18 mm
Border / High	approx. 15 mm
Max. Thickness of Passepartouts	approx. 1.4 mm

- Classic wooden frame, 100% FSC quality
- High-quality washed glass
- Premium passe-partout included
- Rear with prop up to size 15 x 20 cm
- Rear with heavy-duty hanger from size 30 x 40 cm



Frame Size / cm	Picture size / cm	Birch	Beech	Nature	Nut	Black	Qty
10 x 15	7 x 10	175096	175101	175106	175111	175116	12
13 x 18	9 x 13	175097	175102	175107	175112	175117	12
15 x 20	10 x 15	175098	175103	175108	175113	175118	12
20 x 30	13 x 18	175099	175104	175109	175114	175119	12
30 x 40	20 x 28	175100	175105	175110	175115	175120	6

= minimum order quantity
 = novelty

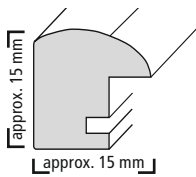
BC = blister size
 HT = hangtag
 CB = packed in cardboard box

PO = polybag
 BA = banderol

Wood Picture Frame



PICTURE FRAMES



"Candy" Wooden Frame

Border / Width	approx. 15 mm
Border / High	approx. 15 mm
Max. Thickness of Passepartouts	approx. 1.4 mm

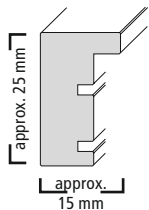
- Trendy wooden frame
- High-quality glass
- Precision mitre
- Hama Easy-Clip closure system for quick and easy framing
- Rear with prop up to size 15 x 20 cm
- Rear with heavy-duty hanger from size 40 x 50 cm



Frame Size / cm	Picture size / cm	Green	Turquoise	Red	Pink	White	Qty
10 x 15	7 x 10	125381	125387	125393	125399	125405	82
13 x 18	9 x 13	125382	125388	125394	125400	125406	60
15 x 20	10 x 15	125383	125389	125395	125401	125407	41
20 x 30	13 x 18	125384	125390	125396	125402	125408	19



with a premium mount



"Dana" Wooden Frame

Border / Width	15 mm
Border High	approx. 18 mm
Max. Thickness of Passepartouts	approx. 1.4 mm

- Stylish box frame with a double groove for individual use
- The picture frame can be used as a 3D frame and as a standard wooden frame
- 3D frame: integrated spacer for a 3D depth effect in a height of 11 mm, allows ornamentation with decorative materials
- Premium passe-partout included
- Ground, high-quality glass
- Precision mitre
- Rear with prop up to size 15 x 20 cm
- Rear with heavy-duty hanger from size 30 x 40 cm



Frame Size / cm	Picture size / cm	Oak	Stone Grey	Black	White	Qty
13 x 18	9 x 13	175153	175157	175161	175165	32
15 x 20	10 x 15	175154	175158	175162	175166	23
20 x 30	13 x 18	126295	126296	126297	126298	16
24 x 30	15 x 20	175155	175159	175163	175167	16
30 x 40	20 x 28	175156	175160	175164	175168	15

█ = minimum order quantity
█ = novelty

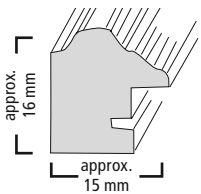
BC = blister size
HT = hangtag
CB = packed in cardboard box

PO = polybag
BA = banderol

Wood Picture Frame



PICTURE FRAMES



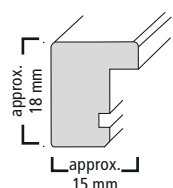
"Florida" Wooden Frame

Border / Width	15 mm
Border / High	approx. 16 mm
Max. Thickness of Passepartouts	-

- wooden frame
- including passepartouts
- round ground, quality washed glass
- precision mitring
- including prop
- living character for a unique atmosphere
- Rear with prop up to size 20 x 30 cm



Frame Size / cm	Picture size / cm	Anthracite	Brown	Qty
9 x 13	5 x 7	064013	-	91
10 x 15	7 x 10	064015	064505	72
13 x 18	9 x 13	064016	064506	54
15 x 20	10 x 15	064018	064508	36
20 x 30	13 x 18	-	064511	23
21 x 29.7 (A4)	10 x 15	-	064518	23
24 x 30	15 x 20	-	064513	23
30 x 40	20 x 28	-	064515	23
30 x 45	20 x 30	-	064516	23



"Giulia" Wooden Frame

Border / Width	15 mm
Border / High	approx. 18 mm
Max. Thickness of Passepartouts	1.8 mm

- Natural wooden frame
- High-quality washed glass
- Precision mitre
- With stand and hanger
- Hama Easy-Clip fastening system for quick and easy framing
- Rear with prop up to size 15 x 20 cm
- Rear with heavy-duty hangers from size 40 x 50 cm



Frame Size / cm	Picture size / cm	Gold	Black	White	Nut	Qty
10 x 15	7 x 10	100656	100644	100650	100638	68
13 x 18	9 x 13	100657	100645	100651	100639	50
15 x 20	10 x 15	100658	100646	100652	100640	40
20 x 30	13 x 18	100659	100647	100653	100641	21
30 x 40	20 x 28	100660	100648	100654	100642	21
40 x 50	28 x 35	100661	100649	100655	100643	30



Frame Size / cm	Picture size / cm	Silver	Oak	Beech	Burgundy	Qty
10 x 15	7 x 10	100662	100632	100620	100626	68
13 x 18	9 x 13	100663	100633	100621	100627	50
15 x 20	10 x 15	100664	100634	100622	100628	40
20 x 30	13 x 18	100665	100635	100623	100629	21
30 x 40	20 x 28	100666	100636	100624	100630	21
40 x 50	28 x 35	100667	100637	100625	100631	30

= minimum order quantity
 = novelty

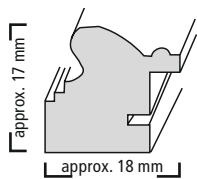
BC = blister size
 HT = hangtag
 CB = packed in cardboard box

PO = polybag
 BA = banderol

Wood Picture Frame



PICTURE FRAMES



"Idaho" Wooden Frame

Border / Width	18 mm
Border / High	approx. 17 mm
Max. Thickness of Passepartouts	approx. 1.4 mm

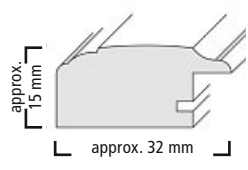
- wooden frame
- including passepartouts
- round ground, quality washed glass
- precision mitring
- including prop
- living character for a unique atmosphere
- Rear with prop up to size 20 x 30 cm
- Rear with heavy-duty hanger from size 40 x 50 cm



Frame Size / cm	Picture size / cm	Brown	Qty
9 x 13	5 x 7	065783	72
10 x 15	7 x 10	065785	66
13 x 18	9 x 13	065786	52
15 x 20	10 x 15	065788	33
18 x 24	10 x 15	065789	26
20 x 30	13 x 18	065791	22
24 x 30	15 x 20	065793	22
28 x 35	18 x 24	065794	15
30 x 40	20 x 28	065795	17
30 x 45	20 x 30	065796	17
40 x 50	28 x 35	064517	41



with a premium mount



"Iowa" Wooden Frame

Border / Width	32 mm
Border / High	approx. 15 mm
Max. Thickness of Passepartouts	1.4 mm

- Natural wooden frame, 100% FSC quality
- Premium passe-partout included
- Ground, high-quality glass
- Precision mitre
- Rear with prop up to size 18 x 24 cm
- Rear with heavy-duty hangers from size 30 x 40 cm



Frame Size / cm	Picture size / cm	Maple	Grey	Nut	Black	White	Qty
13 x 18	9 x 13	126255	126263	126271	126279	126287	12
15 x 20	10 x 15	126256	126264	126272	126280	126288	12
18 x 24	10 x 15	126257	126265	126273	126281	126289	12
20 x 30	13 x 18	126258	126266	126274	126282	126290	12
24 x 30	15 x 20	126259	126267	126275	126283	126291	12
30 x 40	20 x 28	126260	126268	126276	126284	126292	6
40 x 50	28 x 35	126261	126269	126277	126285	126293	6
50 x 70	30 x 45	126262	126270	126278	126286	126294	3

■ = minimum order quantity
■ = novelty

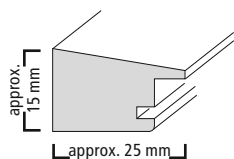
BC = blister size
HT = hangtag
CB = packed in cardboard box

PO = polybag
BA = banderol

Wood Picture Frame



PICTURE FRAMES



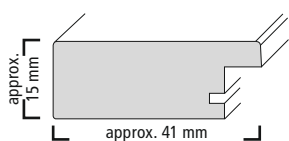
"Lahti" Wooden Frame

Border / Width	approx. 25 mm
Border / High	approx. 15 mm
Max. Thickness of Passepartouts	1.4 mm

- Natural wooden frame, 100% FSC quality
- Flat profile that slopes to the inside
- Ground, high-quality glass
- Precision mitre
- Rear with prop up to size 18 x 24 cm



Frame Size / cm	Picture size / cm	Maple	Green	Nut	Black	White	Qty
10 x 15	7 x 10	175170	175176	175182	175188	175194	48
13 x 18	9 x 13	175171	175177	175183	175189	175195	48
15 x 20	10 x 15	175172	175178	175184	175190	175196	36
18 x 24	10 x 15	175173	175179	175185	175191	175197	24
20 x 30	13 x 18	175174	175180	175186	175192	175198	24
30 x 40	20 x 28	175175	175181	175187	175193	175199	12



"Nordic" Wooden Frame

Border / Width	41 mm
Border / High	approx. 15 mm
Max. Thickness of Passepartouts	approx. 1.4 mm

- Natural wooden frame
- Brushed and patinated surface
- Pre-punched mount included
- Ground, high-quality glass
- Precision mitre
- Rear with prop up to size 15 x 20 cm
- Rear with heavy-duty hanger from size 40 x 50 cm



Frame Size / cm	Picture size / cm	Brown	Grey	Black	Qty
13 x 18	9 x 13	125333	125339	125345	34
15 x 20	10 x 15	125334	125340	125346	27
20 x 30	13 x 18	125335	125341	125347	20
30 x 40	20 x 28	125336	125342	125348	15
40 x 50	28 x 35	125337	125343	125349	43
50 x 70	30 x 45	125338	125344	125350	28

= minimum order quantity
 = novelty

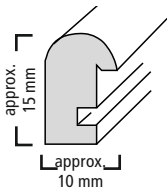
BC = blister size
 HT = hangtag
 CB = packed in cardboard box

PO = polybag
 BA = banderol

Wood Picture Frame



PICTURE FRAMES



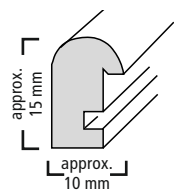
"Oregon" Wooden Frame

Border / Width	10 mm
Border / High	approx. 15 mm
Max. Thickness of Passepartouts	Not for Mounts

- wooden frame
- including prepunched passepartouts
- round ground, quality washed glass
- precision mitring
- including prop
- living character for a unique atmosphere
- Rear with prop up to size 20 x 30 cm
- Rear with heavy-duty hanger from size 40 x 50 cm
- Suitable for passe-partouts from size 40 x 50 cm



Frame Size / cm	Picture size / cm	Nature	Cork	Oak	Black	Mahogany	White	Qty
7 x 10	-	064552	064582	064612	064642	064932	-	186
9 x 13	5 x 7	064553	064583	064613	064643	064933	064673	120
10 x 10	-	-	-	064453	-	-	-	118
10 x 15	7 x 10	064555	064585	064615	064645	064935	064675	91
13 x 18	9 x 13	064556	064586	064616	064646	064936	064676	72
15 x 20	10 x 15	064558	064588	064618	064648	064938	064678	56
18 x 24	10 x 15	064559	064589	064619	064649	064939	064679	42
20 x 20	13 x 13	-	-	064454	-	-	-	44
20 x 30	13 x 18	064561	064591	064621	064651	064941	064681	29
21 x 29.7 (A4)	15 x 20	064548	064545	064549	064652	-	064682	25
24 x 30	15 x 20	064563	064593	064623	064653	064943	064683	25
28 x 35	18 x 24	064564	064594	064624	064654	-	-	19
30 x 30	20 x 20	064449	-	064455	-	-	-	18
30 x 40	20 x 28	064565	064595	064625	064655	064945	064685	25
30 x 45	20 x 30	064566	064596	064626	064656	064946	064686	25



"Oregon" Wooden Frame

Border / Width	10 mm
Border / High	approx. 15 mm
Max. Thickness of Passepartouts	-

- Natural wooden frame
- Including prepunched passe-partout
- Ground, washed high-quality glass
- Precision mitre
- With prop
- Living character for a unique atmosphere
- Rear with prop up to size 20 x 30 cm
- Rear with heavy-duty hanger from size 40 x 50 cm



Frame Size / cm	Picture size / cm	Orange	Silver	Gold	Qty
7 x 10	7 x 10	-	064902	064702	186
9 x 13	5 x 7	-	064903	064703	120
10 x 15	7 x 10	067640	064905	064705	91
13 x 18	9 x 13	067641	064906	064706	72
15 x 20	10 x 15	067642	064908	064708	56
18 x 24	10 x 15	-	064909	064709	42
20 x 30	13 x 18	067644	064911	064711	29
21 x 29.7 (A4)	15 x 20	-	064869	064712	25
24 x 30	15 x 20	-	064913	064713	25
28 x 35	18 x 24	-	064914	064714	19
30 x 40	20 x 28	067647	064915	064715	25
30 x 45	20 x 30	067648	064916	064716	25

= minimum order quantity
 = novelty

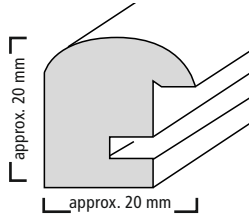
BC = blister size
 HT = hangtag
 CB = packed in cardboard box

PO = polybag
 BA = banderol

Wood Picture Frame



PICTURE FRAMES



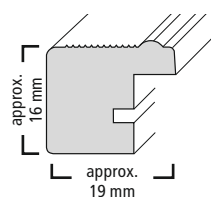
"Oregon Broad" Wooden Frame

Border / Width	20 mm
Border / High	approx. 20 mm
Max. Thickness of Passepartouts	1,4

- wooden frame
- including passepartouts
- round ground, quality washed glass
- precision mitring
- including prop
- living character for a unique atmosphere
- Rear with prop up to size 18 x 24 cm
- Suitable for passe-partouts from size 10 x 15 cm



Frame Size / cm	Picture size / cm	Silver	Gold	Qty
10 x 15	7 x 10	068415	068505	62
13 x 18	9 x 13	068416	068506	44
20 x 30	13 x 18	068419	068509	15
30 x 40	20 x 28	068422	068512	20



"Perla" Wooden Frame

Border / Width	19 mm
Border / High	approx. 16 mm
Max. Thickness of Passepartouts	approx. 1.4 mm

- Trendy wooden frame
- Pre-punched mount included
- Ground, high-quality glass
- Precision mitre
- With a stand



Frame Size / cm	Picture size / cm	Black	White	
10 x 15	7 x 10	125325	125329	72
13 x 18	9 x 13	125326	125330	46
15 x 20	10 x 15	125327	125331	36
20 x 30	13 x 18	125328	125332	17

= minimum order quantity
 = novelty

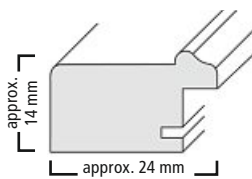
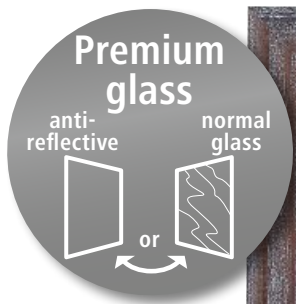
BC = blister size
 HT = hangtag
 CB = packed in cardboard box

PO = polybag
 BA = banderol

Wood Picture Frame



PICTURE FRAMES



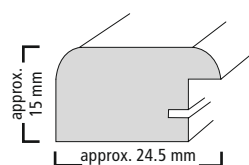
"Rhodes" Wooden Frame

Border / Width	Approx. 14 mm
Border / High	24 mm
Max. Thickness of Passepartouts	1.4 mm

- Rustic wooden frame with patina
- Premium glass, anti-reflective coating on one side
- Float glass quality, ground and washed
- Precision mitre
- Rear with prop up to size 15 x 20 cm
- Rear with heavy-duty hanger from size 40 x 50 cm



Frame Size / cm	Picture size / cm	Birch	Brown	Oak	Grey	Qty
10 x 15	7 x 10	175030	175036	175042	175048	42
13 x 18	9 x 13	175031	175037	175043	175049	39
15 x 20	10 x 15	175032	175038	175044	175050	36
20 x 30	13 x 18	175033	175039	175045	175051	20
30 x 40	20 x 18	175034	175040	175046	175052	26
40 x 50	28 x 35	175035	175041	175047	175053	40



"Riga" Wooden Frame

Border / Width	24.5 mm
Border / High	approx. 15 mm
Max. Thickness of Passepartouts	approx. 1.4 mm

- Natural wooden frame
- Passepartout included
- Round ground, high-quality washed glass
- Exact precision mitre
- Living character for a unique atmosphere
- Rear with prop up to size 18 x 24 cm
- Rear with heavy-duty hanger from size 40 x 50 cm
- Suitable for passe-partouts from size 10 x 15 cm



Frame Size / cm	Picture size / cm	Nature	Red	Blue	Brown	Azure	Green	Pink	Qty
10 x 15	7 x 10	059622	059654	059670	059686	126215	126223	126231	68
13 x 18	9 x 13	059623	059655	059671	059687	126216	126224	126232	39
15 x 20	10 x 15	059624	059656	059672	059688	126217	126225	126233	36
18 x 24	10 x 15	059625	059657	059673	059689	126218	126226	126234	28
20 x 30	13 x 18	059627	059659	059675	059691	126219	126227	126235	18
21 x 29.7 (A4)	15 x 20	059628	059660	059676	059692	-	-	-	18
24 x 30	15 x 20	059629	059661	059677	059693	126220	126228	126236	18
30 x 40	20 x 28	059631	059663	059679	059695	126221	126229	126237	21
30 x 45	20 x 30	059632	-	-	059696	-	-	-	21
40 x 40	28 x 28	059424	-	-	-	-	-	-	43
40 x 50	28 x 35	059633	059665	059681	059697	126222	126230	126238	43
50 x 60	30 x 40	059635	059667	059683	059699	-	-	-	74
50 x 70	30 x 45	059636	059668	059684	059700	-	-	-	74
60 x 80	40 x 60	059637	-	-	059701	-	-	-	35

= minimum order quantity
 = novelty

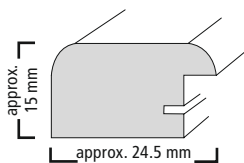
BC = blister size
 HT = hangtag
 CB = packed in cardboard box

PO = polybag
 BA = banderol

Wood Picture Frame



PICTURE FRAMES



"Riga" Wooden Frame

Border / Width	24.5 mm
Border / High	approx. 15 mm
Max. Thickness of Passepartouts	approx. 1.4 mm

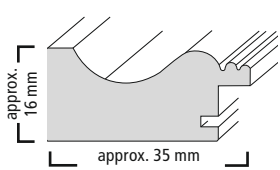
- Natural wooden frame
- Passepartout included
- Round ground, high-quality washed glass
- Exact precision mitre
- Living character for a unique atmosphere
- Rear with prop up to size 18 x 24 cm
- Rear with heavy-duty hanger from size 40 x 50 cm
- Suitable for passe-partouts from size 10 x 15 cm



Frame Size / cm	Picture size / cm	Orange	Dark Brown	White	Silver	Gold	Qty
10 x 15	7 x 10	062930	062946	062962	059718	059734	68
13 x 18	9 x 13	062931	062947	062963	059719	059735	39
15 x 20	10 x 15	062932	062948	062964	059720	059736	36
18 x 24	10 x 15	062933	062949	062965	059721	059737	28
20 x 30	13 x 18	062935	062951	062967	059723	059739	18
21 x 29.7 (A4)	15 x 20	062936	062952	062968	059724	059740	18
24 x 30	15 x 20	-	062953	062969	059725	059741	18
30 x 40	20 x 28	062939	062955	062971	059727	059743	21
30 x 45	20 x 30	-	062956	062972	059728	-	21
40 x 40	28 x 28	-	062980	062983	059434	-	43
40 x 50	28 x 35	062941	062957	062973	059729	059745	43
50 x 60	30 x 40	-	062959	062975	059731	059747	74
50 x 70	30 x 45	-	062960	062976	059732	059748	74
60 x 80	40 x 60	-	062961	062977	059733	-	35



with a premium mount



"Vélo" Wooden Frame

Border / Width	35 mm
Border / High	16 mm
Max. Thickness of Passepartouts	approx. 1.4 mm

- Frame in cottage style with a concave profile
- Stripped edges give the frame a touch of rustic flair
- Premium passe-partout included
- Ground, high-quality, washed glass
- Precision mitre
- Rear with prop up to size 15 x 20 cm
- Rear with heavy-duty hanger from size 30 x 40 cm
- Suitable for passe-partouts from size 13 x 18 cm



Frame Size / cm	Picture size / cm	Cappuccino	Cream	Grey	White	Qty
13 x 18	9 x 13	175121	175129	175137	175145	30
15 x 20	10 x 15	175122	175130	175138	175146	25
20 x 30	13 x 18	175123	175131	175139	175147	20
24 x 30	15 x 20	175124	175132	175140	175148	36
30 x 40	20 x 28	175125	175133	175141	175149	24
40 x 50	28 x 35	175126	175134	175142	175150	41
50 x 70	30 x 45	175127	175135	175143	175151	27
60 x 80	40 x 60	175128	175136	175144	175152	35

= minimum order quantity
 = novelty

BC = blister size
 HT = hangtag
 CB = packed in cardboard box

PO = polybag
 BA = banderol

Wood Picture Frame

Wood Picture Frame

26

Photo Gallery Picture
Frame

46

Photo Gallery Picture Frame

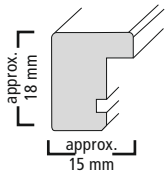
Giulia

47

PICTURE FRAMES



with a premium mount



"Giulia" Wooden Gallery Frame

Material	Wood
Border / Width	15 mm
Border High	approx. 18 mm
Max. Thickness of Passepartouts	approx. 1.8 mm

- Natural wooden frame
- High-quality glass
- Precision mitre
- With a premium mount
- With 2 heavy-duty hooks
- Hama Easy-Clip closure system for quick and easy framing



Frame Size / cm	Picture size / cm	Beech	Burgundy	Oak	Nut	White	Silver	Gold	Qty
20 x 61	3x 10 x 15	114595	114600	114605	114610	-	-	114625	21
25 x 55	3x 13 x 18	-	-	100677	100681	-	100697	-	21
20 x 61	4x 10 x 15	100670	-	-	-	100690	-	-	60
35 x 61	4x 10 x 15	-	-	100679	-	-	-	-	40

= minimum order quantity
 = novelty

BC = blister size
 HT = hangtag
 CB = packed in cardboard box

PO = polybag
 BA = banderol

Plastic Frame



PICTURE FRAMES

Plastic Frame

48

Photo Gallery

Picture Frame

65

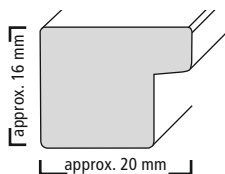
Plastic Frame

Asteria	49
Arona	50
Jerez	51
Cairo	52
Madrid	53
Malaga	55
Paris	57
Porto	58
Santa Cruz	59
Saragossa	60
Sevilla	61
Sevilla polystyrene	63
Valencia	64





with a premium mount



"Asteria" Plastic Frame,

approx. Border / Width	20 mm
approx. Border High:	16 mm
Max. Thickness of Passepartouts	approx. 1.4 mm

- Plastic frame with an elegant, wooden look
- With a silver inner and outer edge
- Precision mitre
- High-quality glass
- With a premium mount
- With a hanger



Frame Size / cm	Picture size / cm	Black	Beech	Chestnut	Nut	Brown	Qty
10 x 15	7 x 10	125562	125567	125572	125577	125582	70
13 x 18	9 x 13	125563	125568	125573	125578	125583	54
15 x 20	10 x 15	125564	125569	125574	125579	125584	35
20 x 30	13 x 18	125565	125570	125575	125580	125585	17
30 x 40	20 x 28	125566	125571	125576	125581	125586	24

pink = minimum order quantity
yellow = novelty

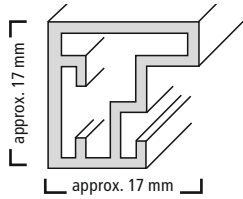
BC = blister size
HT = hangtag
CB = packed in cardboard box

PO = polybag
BA = banderol

Plastic Frame



PICTURE FRAMES



"Arona" Plastic Frame

Border / Width	approx. 17 mm
Border / High	approx. 17 mm
Max. Thickness of Passepartouts	approx. 1.4 mm

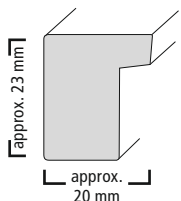
- Trendy plastic frame with black outer sides
- High-quality glass
- Precision mitre
- With a heavy-duty hook



Frame Size / cm	Picture size / cm	Green	Petrol	Red	Silver	White	Qty
10 x 15	7 x 10	125907	125897	125902	125892	125887	60
13 x 18	9 x 13	125908	125898	125903	125893	125888	48
15 x 20	10 x 15	125909	125899	125904	125894	125889	48
20 x 30	13 x 18	125910	125900	125905	125895	125890	24
30 x 40	20 x 28	125911	125901	125906	125896	125891	16



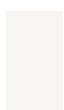
with a premium mount



"Jerez" Plastic Frame

Border / Width	20 mm
Border / High	approx. 23 mm
Max. Thickness of Passepartouts	Approx. 1.8 mm

- Plastic frame with a classic box design
- High-quality glass
- Precision mitre
- With a premium mount
- Rear with prop up to size 15 x 20 cm
- Rear with heavy-duty hanger up to size 40 x 50 cm



Frame Size / cm	Picture size / cm	Nature	Black	White	Wenge	Silver	Qty
13 x 18	9 x 13	125986	125992	125998	126004	126010	27
15 x 20	10 x 15	125987	125993	125999	126005	126011	25
18 x 24	10 x 15	125988	125994	126000	126006	126012	19
20 x 30	13 x 18	125989	125995	126001	126007	126013	12
30 x 40	20 x 28	125990	125996	126002	126008	126014	16
40 x 50	28 x 35	125991	125997	126003	126009	126015	32

= minimum order quantity
 = novelty

BC = blister size
HT = hangtag
CB = packed in cardboard box

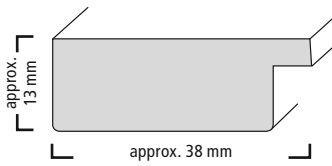
PO = polybag
BA = banderol

Plastic Frame



PICTURE FRAMES

with a premium mount



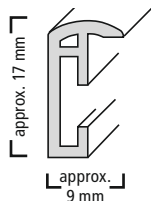
"Cairo" Plastic Frame

Border / Width	38 mm
Border / High	approx. 13 mm
Max. Thickness of Passepartouts	Approx. 1.4 mm

- Plastic frame with a brushed wooden appearance
- High-quality glass
- Precision mitre
- With a premium mount
- Rear with prop ut to size 15 x 20 cm
- Rear with heavy-duty hanger up to size 40 x 50 cm



Frame Size / cm	Picture size / cm	Champagne	Ash	Oak	Slate Blue	nut	Qty
13 x 18	9 x 13	125947	125952	125957	125962	125967	36
15 x 20	10 x 15	125948	125953	125958	125963	125968	29
20 x 30	13 x 18	125949	125954	125959	125964	125969	20
30 x 40	20 x 28	125950	125955	125960	125965	125970	16
40 x 50	28 x 35	125951	125956	125961	125966	125971	48



"Madrid" Plastic Frame

Border / Width	9 mm
Border / High	approx. 17 mm
Max. Thickness of Passepartouts	1.7 mm

- Stylish plastic frame
- High-quality glass
- Precision mitre
- Rear with prop up to size 15 x 20 cm
- Rear with heavy-duty hanger from size 30 x 40 cm



Frame Size / cm	Picture size / cm	Wine Red	Orange	Light Green	Pink	Champagne	Qty
10 x 15	7 x 10	031710	031722	031728	125471	125477	72
13 x 18	9 x 13	031711	031723	031729	125472	125478	48
15 x 20	10 x 15	031712	031724	031730	125473	125479	48
20 x 30	13 x 18	031713	031725	031731	125474	125480	24
30 x 40	20 x 28	031714	031726	031732	125475	125481	12
30 x 45	20 x 30	-	-	-	-	125482	12
40 x 50	28 x 35	031715	031727	031733	125476	125483	6
40 x 60	30 x 45	-	-	-	-	125484	6
50 x 70	30 x 45	-	-	-	-	125485	5

■ = minimum order quantity
■ = novelty

BC = blister size
 HT = hangtag
 CB = packed in cardboard box

PO = polybag
 BA = banderol

Plastic Frame



PICTURE FRAMES



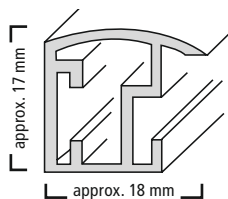
"Madrid" Plastic Frame

Border / Width	9 mm
Border / High	approx. 17 mm
Max. Thickness of Passepartouts	1.7 mm

- Stylish plastic frame
- High-quality glass
- Precision mitre
- Rear with prop up to size 15 x 20 cm
- Rear with heavy-duty hanger from size 30 x 40 cm



Frame Size / cm	Picture size / cm	Blue	Black	Gold	Silver	Red	White	Steel	Bronze	Qty
10 x 15	7 x 10	066480	066485	066490	066495	066535	031764	034981	034990	72
13 x 18	9 x 13	066481	066486	066491	066496	066536	031765	034982	034991	48
15 x 20	10 x 15	066602	066604	066607	066634	066637	031766	034983	034992	48
20 x 30	13 x 18	066482	066487	066492	066497	066537	031767	034984	034993	24
30 x 40	20 x 28	066483	066488	066493	066498	066538	031768	034985	034994	12
30 x 45	20 x 30	066775	066776	066777	066778	066779	031769	034986	034995	12
40 x 50	28 x 35	066484	066489	066494	066499	066539	031770	034987	034996	6
40 x 60	30 x 45	067613	067614	067615	067616	-	031772	034989	034997	6
50 x 70	30 x 45	066565	066566	066567	066568	066569	031771	034988	034998	5



Plastic Frame "Malaga"

Border / Width	18 mm
Border / High	approx. 17 mm
Max. Thickness of Passepartouts	1.8 mm

- High-quality glass
- Precision mitre
- With a mount
- Rear with prop up to size 15 x 20 cm
- Rear with heavy-duty hanger from size 40 x 50 cm



Frame Size / cm	Picture size / cm	Red	Orange	Green	Fuchsia	Qty
10 x 15	7 x 10	058132	058138	058152	069917	50
13 x 18	9 x 13	058133	058139	058153	069918	48
15 x 20	10 x 15	058134	058140	058154	069919	24
20 x 30	13 x 18	058135	058141	058155	069920	25
30 x 40	20 x 28	058136	058142	058156	069921	8
40 x 50	28 x 35	058137	058143	058157	069922	8

= minimum order quantity
 = novelty

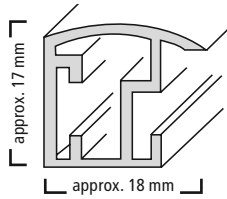
BC = blister size
 HT = hangtag
 CB = packed in cardboard box

PO = polybag
 BA = banderol

Plastic Frame



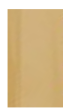
PICTURE FRAMES



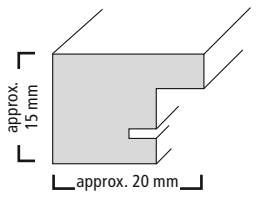
Plastic Frame "Malaga"

Border / Width	18 mm
Border / High	approx. 17 mm
Max. Thickness of Passepartouts	1.8 mm

- High-quality glass
- Precision mitre
- Rear with prop up to size 15 x 20 cm
- Rear with heavy-duty hanger from size 40 x 50 cm



Frame Size / cm	Picture size / cm	Black	Blue	Gold	Silver	White	Espresso	Qty
10 x 15	7 x 10	058500	058508	058516	058524	031758	035190	50
13 x 18	9 x 13	058501	058509	058517	058525	031759	035191	48
15 x 20	10 x 15	058502	058510	058518	058526	031760	035192	24
20 x 30	13 x 18	058503	058511	058519	058527	031761	035193	25
21 x 29.7	13 x 18	058532	-	058533	058534	-	-	25
30 x 40	20 x 28	058504	058512	058520	058528	031762	035194	8
40 x 50	28 x 35	058505	058513	058521	058529	031763	035195	8
50 x 70	30 x 45	058506	058514	058522	058530	034729	-	6



"Paris" Plastic Frame

Border / Width	20 mm
Border / High	approx. 15 mm
Max. Thickness of Passepartouts	Approx. 1.4 mm

- Plastic frame with a brushed aluminium appearance
- High-quality glass
- Precision mitre
- Rear with prop up to size 15 x 20 cm
- Rear with heavy-duty hanger up to size 40 x 50 cm



Frame Size / cm	Picture size / cm	Contrast Grey	Copper	Black	Silver	Steel	Qty
10 x 15	7 x 10	126028	126034	126040	126046	126052	72
13 x 18	9 x 13	126029	126035	126041	126047	126053	48
15 x 20	10 x 15	126030	126036	126042	126048	126054	40
20 x 30	13 x 18	126031	126037	126043	126049	126055	24
30 x 40	20 x 28	126032	126038	126044	126050	126056	12
40 x 50	28 x 35	126033	126039	126045	126051	126057	6

= minimum order quantity
 = novelty

BC = blister size
 HT = hangtag
 CB = packed in cardboard box

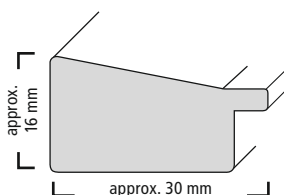
PO = polybag
 BA = banderol

Plastic Frame



PICTURE FRAMES

with a premium mount



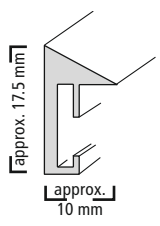
Plastic Frame "Porto"

Border / Width	approx. 30 mm
Border / High	approx. 16 mm
Max. Thickness of Passepartouts	1.4 mm

- Plastic frame with an elegant wooden appearance and a silver inner edge
- Precision mitre
- High-quality glass
- With a premium mount
- With a premium mount- Rear with prop up to size 18 x 24 cm
- Rear with heavy-duty hanger from size 40 x 50 cm



Frame Size / cm	Picture size / cm	Maple	Anthracite	Gold	Grey Pine	Nut	Steel	Qty
13 x 18	9 x 13	125612	125624	125636	125648	125660	125672	33
15 x 20	10 x 15	125613	125625	125637	125649	125661	125673	25
18 x 24	10 x 15	125614	125626	125638	125650	125662	125674	24
20 x 20	13 x 13	125615	125627	125639	125651	125663	125675	26
20 x 30	13 x 18	125616	125628	125640	125652	125664	125676	17
30 x 30	20 x 20	125617	125629	125641	125653	125665	125677	14
30 x 40	20 x 28	125618	125630	125642	125654	125666	125678	14
40 x 50	28 x 35	125619	125631	125643	125655	125667	125679	40



Plastic Frame "Santa Cruz"

Border / Width	10 mm
Border / High	approx. 17.5 mm
Max. Thickness of Passepartouts	approx. 1.4 mm

- Stylish plastic frame
- Ground, high-quality glass
- Precision mitre
- With a premium mount- Rear with prop up to size 15 x 20 cm
- Rear with heavy-duty hanger from size 30 x 40 cm



Frame Size / cm	Picture size / cm	White	Black	Petrol	Turquoise	Plum	Steel	Silver	Gold	Qty
10 x 15	7 x 10	114409	114415	114421	114427	114433	114439	114445	114451	72
13 x 18	9 x 13	114410	114416	114422	114428	114434	114440	114446	114452	48
15 x 20	10 x 15	114411	114417	114423	114429	114435	114441	114447	114453	48
20 x 30	13 x 18	114412	114418	114424	114430	114436	114442	114448	114454	24
30 x 40	20 x 28	114413	114419	114425	114431	114437	114443	114449	114455	12
40 x 50	28 x 35	114414	114420	114426	114432	114438	114444	114450	114456	6

= minimum order quantity
 = novelty

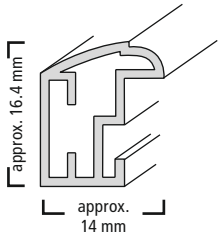
BC = blister size
 HT = hangtag
 CB = packed in cardboard box

PO = polybag
 BA = banderol

Plastic Frame



PICTURE FRAMES



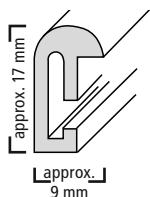
Plastic Frame "Saragossa"

Border / Width	14 mm
Border / High	approx. 16.4 mm
Max. Thickness of Passepartouts	1.8 mm

- High-quality glass
- Precision mitre
- Rear with prop up to size 15 x 20



Frame Size / cm	Picture size / cm	White	Silver	Gold	Steel	Qty
10 x 15	7 x 10	126250	067634	067674	067694	20
13 x 18	9 x 13	126251	067635	067675	067695	20
15 x 20	10 x 15	126252	067636	067676	067696	20
20 x 30	13 x 18	126253	067637	067677	067697	15
30 x 40	20 x 28	126254	067638	067678	067698	5



Plastic Frame "Sevilla"

Border / Width	approx. 9 mm
Border / High	approx. 17 mm
Max. Thickness of Passepartouts	1.7 mm

- Stylish plastic frame
- With a mount
- Ground, high-quality glass
- Specially coated plastic border for long-lasting frame colours
- Precision mitre
- Hama EasyClip closure system for quick and easy framing
- Rear with prop up to size 18 x 24 cm
- Rear with heavy-duty hanger from 28 x 35 cm



Frame Size / cm	Picture size / cm	Black	White	Red	Blue	Gold matt	Silver matt	Grey matt	Qty
9 x 13	5 x 7	066213	066243	066273	066303	066393	066423	066453	96
10 x 15	7 x 10	066215	066245	066275	066305	066395	066425	066455	72
13 x 18	9 x 13	066216	066246	066276	066306	066396	066426	066456	48
15 x 20	10 x 15	066218	066248	066278	066308	066398	066428	066458	48
18 x 24	10 x 15	066219	066249	066279	066309	066399	066429	066459	36
20 x 28	13 x 18	066220	066250	066280	066310	066400	066430	066460	24
20 x 30	13 x 18	066221	066251	066281	066311	066401	066431	066461	24
21 x 29,7 (DIN A4)	15 x 20	066222	066252	066282	066312	066402	066432	066462	24
24 x 30	15 x 20	066223	066253	066283	066313	066403	066433	066463	24
28 x 35	18 x 24	066224	066254	066284	066314	066404	066434	066464	18
30 x 30	20 x 20	066268	066297	-	-	-	066389	066630	12
30 x 40	20 x 28	066225	066255	066285	066315	066405	066435	066465	12
30 x 45	20 x 30	066226	066256	066286	066316	066406	066436	066466	12
40 x 40	28 x 28	066269	066298	-	-	-	066390	066631	38

= minimum order quantity
 = novelty

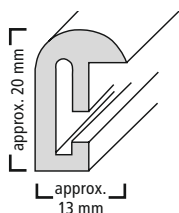
BC = blister size
 HT = hangtag
 CB = packed in cardboard box

PO = polybag
 BA = banderol

Plastic Frame



PICTURE FRAMES



Plastic Frame "Sevilla"

Border / Width	approx. 13 mm
Border / High	approx. 20 mm
Max. Thickness of Passepartouts	1.7 mm

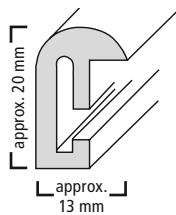
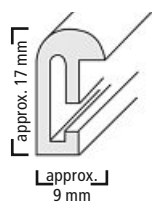
- Stylish plastic frame
- With a mount
- Ground, high-quality glass
- Specially coated plastic border for long-lasting frame colours
- Precision mitre
- Hama EasyClip closure system for quick and easy framing
- Rear with prop up to size 18 x 24 cm
- Rear with heavy-duty hanger from 28 x 35 cm



Frame Size / cm	Picture size / cm	Black	White	Red	Blue	Gold matt	Silver matt	Grey matt	Qty
40 x 50	28 x 35	066227	066257	066287	066317	066407	066437	066467	6
40 x 60	30 x 45	066228	066258	066288	066318	066408	066438	066468	6
50 x 50	35 x 35	066270	-	-	-	-	-	-	35
50 x 60	30 x 40	066229	066259	066289	066319	066409	066439	066469	6
50 x 70	30 x 45	066230	066260	066290	066320	066410	066440	066470	6
60 x 80	40 x 60	066232	066262	066292	066322	066412	066442	066472	54
62 x 93	42 x 60	066233	066263	066293	066323	066413	066443	066473	40
70 x 100	50 x 70	066234	066264	066294	066324	066414	066444	066474	30



with a polystyrene disc



Plastic Frame "Sevilla Polystyrene"

up to 29.7 x 42 cm		from 40 x 50 cm	
Border / Width	approx. 9 mm	Border / Width	approx. 13 mm
Border / High	approx. 17 mm	Border / High	approx. 20 mm
Max. Thickness of Passepartouts	1.7 mm	Max. Thickness of Passepartouts	1.7 mm

- The frame features an ultra-breakproof polystyrene disc (thickness: 1 mm) and is therefore ideal for kindergartens, schools and hospitals
- Stylish plastic frame
- Pre-punched mount included
- Precision mitre
- Hama EasyClip fastening system for quick and easy framing
- Rear with heavy-duty hanger from 29.7 x 42 cm



Frame Size / cm	Picture size / cm	Black	Blue	Silver / Matt	Qty
21 x 29,7	15 x 20	061626	061656	061776	21
29,7 x 42	18 x 24	061627	061657	061777	22
40 x 50	28 x 35	061628	061658	061778	38
40 x 60	30 x 45	061629	061659	061779	74
50 x 70	30 x 45	061630	061660	061780	65
60 x 80	40 x 60	061631	061661	061781	30
70 x 100	50 x 70	061632	061662	061782	30

= minimum order quantity
 = novelty

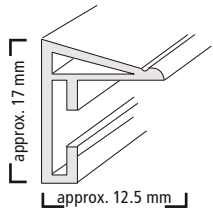
BC = blister size
 HT = hangtag
 CB = packed in cardboard box

PO = polybag
 BA = banderol

Plastic Frame



PICTURE FRAMES



Plastic Frame "Valencia"

Border / Width	13 mm
Border / High	approx. 17 mm
Max. Thickness of Passepartouts	approx. 1.4 mm

- Stylish plastic frame
- High-quality glass
- Precision mitre
- With a mount
- Rear with prop up to size 15 x 20 cm
- Rear with heavy-duty hanger from 40 x 50 cm



Frame Size / cm	Picture size / cm	Black	Blue	Gold	Silver	Titanium	Qty
10 x 15	7 x 10	058860	058866	058872	058878	058884	11
13 x 18	9 x 13	058861	058867	058873	058879	058885	15
15 x 20	10 x 13	058862	058868	058874	058880	058886	13
20 x 30	13 x 18	058863	058869	058875	058881	058887	14
30 x 40	20 x 28	058864	058870	058876	058882	058888	10
40 x 50	28 x 35	058865	058871	058877	058883	058889	5

Plastic Frames

48

Photo Gallery Picture

Frame

65

Photo Gallery Picture Frame

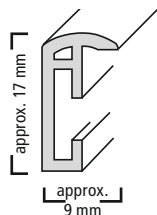
Madrid 65

Malaga 68

Porto 69

Sevilla 70

with a premium mount



"Madrid" Plastic Frame Gallery

Material	Plastic
Border / Width	9 mm
Border High	approx. 17 mm
Max. Thickness of Passepartouts	approx. 1.4 mm
Picture Size	-
Picture Size 2	no specifications
Picture Size 3	no specifications
Picture Size 4	no specifications
Picture Size 5	no specifications

- High-quality glass
- Precision mitre
- With a premium mount
- With a heavy-duty hook



Frame Size / cm	Picture size / cm	Black	Blue	Gold	Qty
20 x 61	3x 10 x 15	-	114575	-	60
23 x 45	3x 10 x 15	066596	066597	066598	20
23 x 70	3x 13x18	114571	114576	-	60
25 x 55	3x 13 x 18	066719	-	-	20



Frame Size / cm	Picture size / cm	Silver	Steel	Qty
20 x 61	3x 10 x 15	-	114590	60
23 x 45	3x 10 x 15	066599	-	20
23 x 70	3x 13x18	-	114591	60
25 x 55	3x 13 x 18	066722	-	20

■ = minimum order quantity
■ = novelty

BC = blister size
HT = hangtag
CB = packed in cardboard box

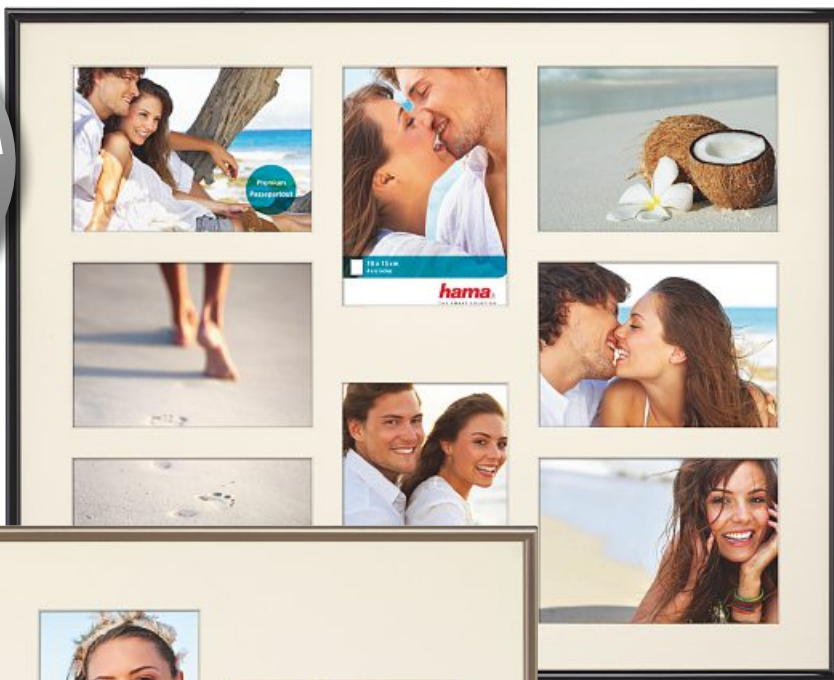
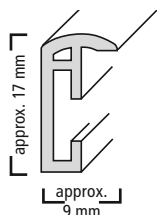
PO = polybag
BA = banderol

Plastic Frame



PICTURE FRAMES

with a premium mount



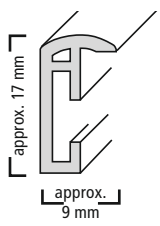
"Madrid" Plastic Frame Gallery

Material	Plastic
Border / Width	9 mm
Border High	approx. 17 mm
Max. Thickness of Passepartouts	approx. 1.4 mm
Picture Size	-
Picture Size 2	no specifications
Picture Size 3	no specifications
Picture Size 4	no specifications
Picture Size 5	no specifications

- High-quality glass
- Precision mitre
- With a premium mount
- With a heavy-duty hook



Frame Size / cm	Picture size / cm	Black	Silver	Steel	Qty
40 x 40	4x 10 x 15	114572	-	114592	48
40 x 50	8x 10 x 15	114573	114588	114593	48
50 x 50	4x 13 x 18	114574	-	114594	43



"Madrid" Plastic Frame Gallery

Material	Plastic
Border / Width	9 mm
Border High	approx. 17 mm
Max. Thickness of Passepartouts	approx. 1.7 mm
Picture Size	9 x 13 cm
Picture Size 2	10 x 15 cm
Picture Size 3	7 x 10 cm
Picture Size 4	9 x 9 cm
Picture Size 5	3.5 x 4.5 cm

- High-quality glass
- Precision mitre
- With a multiple mount
- For 9 pictures: 2x 9x13 cm, 2x 10x15 cm, 2x 7x10 cm oval, 1x 9x9 cm and two passport photos



Frame Size / cm	Blue	Black	Gold	Silver	Qty
30 x 40	066951	066952	066953	066954	12

= minimum order quantity
 = novelty

BC = blister size
 HT = hangtag
 CB = packed in cardboard box

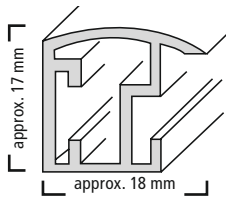
PO = polybag
 BA = banderol

Plastic Frame



PICTURE FRAMES

with a premium mount



"Malaga" Plastic Gallery Frame

Material	Plastic
Border / Width	18 mm
Border High	approx. 17 mm
Max. Thickness of Passepartouts	approx. 1.8 mm
Picture Size	-
Picture Size 2	no specifications
Picture Size 3	no specifications
Picture Size 4	no specifications
Picture Size 5	no specifications

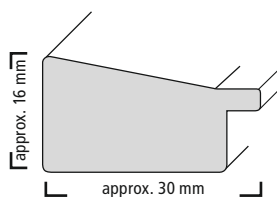
- 10 clips and 2 heavy-duty hooks provide stability
- Polished glass
- With a premium mount



Frame Size / cm	Picture size / cm	Black	Blue	Gold	Silver	Red	Green	White	Qty
20 x 100	5x 10 x 15	058161	058162	058163	058164	058165	058167	058168	4



with a premium mount



"Porto" Plastic Frame Gallery

Material	Plastic
Border / Width	30 mm
Border High	approx. 16 mm
Max. Thickness of Passepartouts	approx. 1.4 mm
Picture Size	-
Picture Size 2	no specifications
Picture Size 3	no specifications
Picture Size 4	no specifications
Picture Size 5	no specifications

- Plastic frame with an elegant wooden appearance and a silver inner edge
- Precision mitre
- High-quality glass
- With a premium mount
- With a heavy-duty hook



Frame Size / cm	Picture size / cm	Maple	Anthracite	Gold	Grey Pine	Nut	Steel	Qty
20 x 60	10 x 15	125620	125632	125644	125656	125668	125680	70
25 x 55	13 x 18	125621	125633	125645	125657	125669	125681	24
40 x 50	10 x 15	125622	125634	125646	125658	125670	125682	40
30 x 90	15 x 20	125623	125635	125647	125659	125671	125683	94

■ = minimum order quantity
■ = novelty

BC = blister size
HT = hangtag
CB = packed in cardboard box

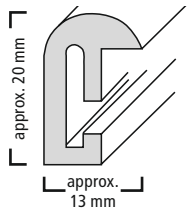
PO = polybag
BA = banderol

Plastic Frame



PICTURE FRAMES

with a premium mount



"Sevilla" Plastic Frame Gallery

Material	Plastic
Border / Width	13 mm
Border High	approx. 20 mm
Max. Thickness of Passepartouts	approx. 1.8 mm
Picture Size	-
Picture Size 2	no specifications
Picture Size 3	no specifications
Picture Size 4	no specifications
Picture Size 5	no specifications

- High-quality glass
- Precision mitre
- With a premium mount



Frame Size / cm	Picture size / cm	Black	Blue	Gold	Silver matt	Grey matt	Qty
26 x 60	3 x 13 x 18	066238	-	066418	066448	066478	52
26 x 60	4 x 10 x 15	066239	066329	-	066449	066479	52

Passe-Partout Sheet

72

Passepartouts

73

Passe-Partout Sheet



PICTURE FRAMES

■ = minimum order quantity
■ = novelty

BC = blister size
HT = hangtag
CB = packed in cardboard box

PO = polybag
BA = banderol

Passepartouts



PICTURE FRAMES

Sheet of Passepartout

Frame Size	-
Picture Size	-
Thickness	1.4 mm

- sheet of passepartout premium
- for individual cuts
- appealing picture presentation



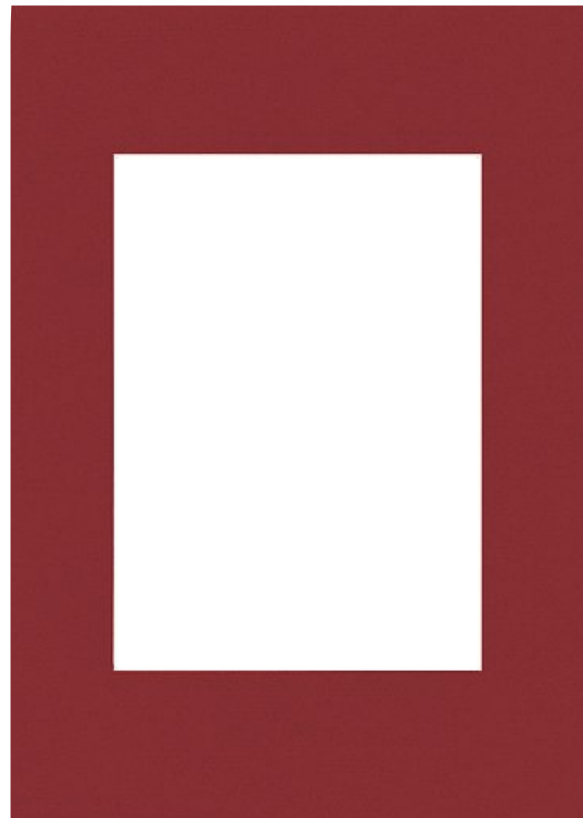
Frame Size / cm	Ivory	Snow	Arctic White	Smooth Black	Qty
70 x 100	063263	063243	063223	063423	20

Passepartout

Premium Passepartout

Frame Size	-
Picture Size	-
Thickness	1.4 mm

- Rectangular passe-partout
- White bevel cut
- Will make your picture stand out



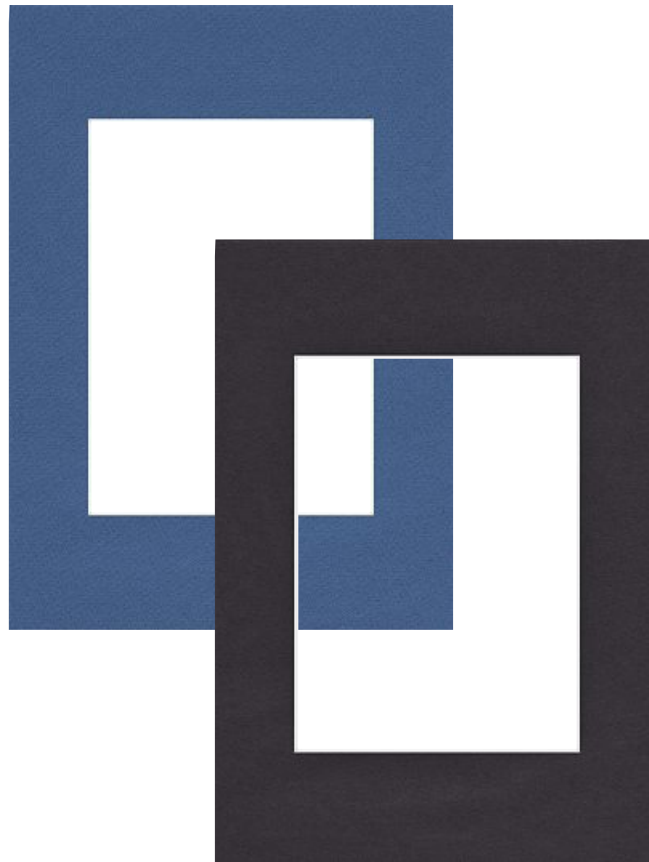
Frame Size / cm	Picture size / cm (+ inlay for digital format)	Brick-red	Qty
13 x 18	9 x 13	059816	20
15 x 20	10 x 15	059817	20
18 x 24	10 x 15	059819	20
20 x 28	13 x 18	059820	20
20 x 30	13 x 18	059821	20
24 x 30	15 x 20	059823	20
30 x 40	20 x 28	059825	20
40 x 50	28 x 35	059827	20



Passepartouts



PICTURE FRAMES



Premium Passepartout

Frame Size	-
Picture Size	-
Thickness	1.4 mm

- Rectangular passe-partout
- White bevel cut
- Will make your picture stand out



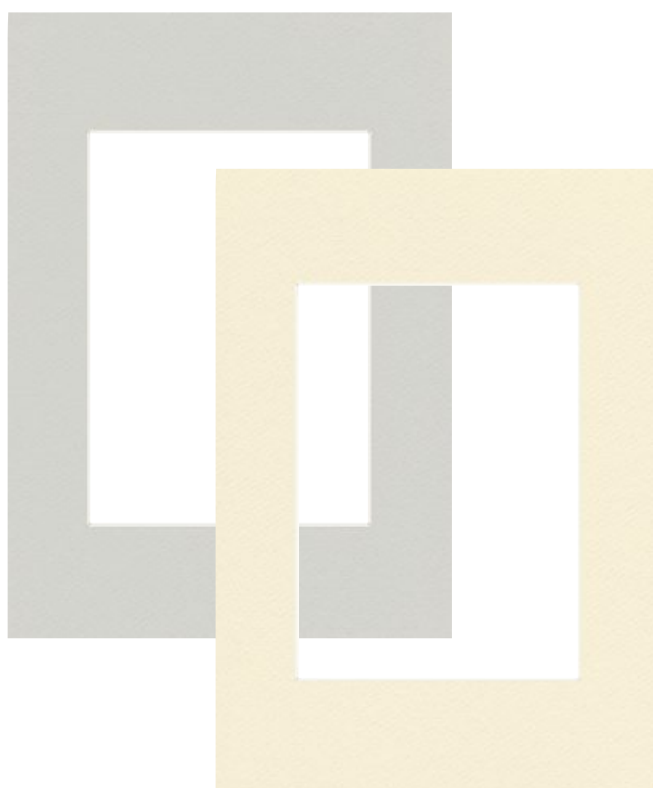
Frame Size / cm	Picture size / cm (+ inlay for digital format)	Cream	Smooth Black	Bottle Blue	Arctic White	Snow	Qty
10 x 15	7 x 10	-	063405	-	063205	063225	20
13 x 18	9 x 13	059916	063406	063366	063206	063226	20
15 x 20	10 x 15	-	063403	-	063307	063312	20
18 x 24	10 x 15	-	-	063369	063209	063229	20
18 x 24	11 x 17	-	-	-	063208	063228	20
20 x 28	13 x 18	-	063410	-	063210	063230	20
20 x 30	13 x 18	059921	063411	063371	063211	063231	20
24 x 30	15 x 20	059923	063413	-	063213	063233	20
28 x 35	18 x 24	-	063414	-	063214	063234	20
30 x 40	20 x 27	-	-	-	063212	063232	20
30 x 40	20 x 28	059925	063415	063375	063215	063235	20
30 x 40	20 x 30	-	063421	-	063221	063241	20
30 x 45	20 x 30	059926	063416	-	063216	063236	20
40 x 50	28 x 35	059927	063417	063377	063217	063237	20
40 x 50	30 x 40	-	063247	-	063207	063227	20
40 x 60	30 x 45	-	063418	-	063218	063238	20
50 x 60	30 x 40	-	063419	-	063219	063239	20
50 x 70	30 x 45	-	063420	-	063220	063240	20
60 x 80	40 x 60	-	063422	-	063222	063242	20
70 x 100	50 x 70	-	063424	-	063224	063244	20



Passepartout

Frame Size	-
Picture Size	-
Thickness	1.4 mm

- rectangular passepartout
- with white bevel cut
- appealing picture presentation



Frame Size / cm	Picture size / cm (+ inlay for digital format)	Ivory	Silver Mist	Qty
10 x 15	7 x 10	063245	-	20
13 x 18	9 x 13	063246	063266	20
15 x 20	10 x 15	063308	-	20
18 x 24	10 x 15	063249	063269	20
20 x 28	13 x 18	063250	063270	20
20 x 30	13 x 18	063251	063271	20
24 x 30	15 x 20	063253	063273	20
28 x 35	18 x 24	063254	-	20
30 x 40	20 x 27	063252	-	20
30 x 40	20 x 28	063255	063275	20
30 x 40	20 x 30	063261	-	20
30 x 45	20 x 30	063256	-	20
40 x 50	28 x 35	063257	063277	20
40 x 50	30 x 40	063407	-	20
40 x 60	30 x 45	063258	-	20
50 x 60	30 x 40	063259	063279	20
50 x 70	30 x 45	063260	-	20
60 x 80	40 x 60	063262	-	20
70 x 100	50 x 70	063264	-	20



Overview of Mounts

Frame Size	no specifications
Picture Size	no specifications
Thickness	1.8 mm
Colour	More Colours

- With samples of mounts in the colours: arctic-white, snow-white, ivory, cream, sand, silver-grey, granite, slate, vanilla, lemon, pale pink, brick-red, light blue, navy blue, deep blue, deep black, lime-gree, moss-green, dark green

	059754
20	PO

= minimum order quantity
 = novelty

BC = blister size
 HT = hangtag
 CB = packed in cardboard box

PO = polybag
 BA = banderol



PICTURE TABS



Picture Tabs
78

Picture Tabs

PICTURE FRAMES



Picture Hangers, triangular eyes with adhesive surface

Material	Metal
Loop Diameter	no specifications
Max Frame Size	no specifications

- Golden picture hangers
- For pictures on cardboards or for picture frames
- Triangular eyes with adhesive surface (diameter: 30 mm)
- Max. 1000g

		007080
6	BC	



Picture hangers, hinged loops 11mm, 10 PC.

Material	Brass
Loop Diameter	11 mm
Max Frame Size	30 x 45 cm

- Triangular hinged loops (11mm) with two nails each (8mm)
- Perfect for hanging picture frames (up to approx. 30 x 45cm)

		007084
6	BC	



Picture hangers, wall hooks, 10 PC.

Material	Metal
Loop Diameter	2 mm
Max Frame Size	30 x 45 cm

- Wall hooks for hanging loops
- One nail each (26mm)
- Perfect for hanging picture frames (up to approx. 30 x 45cm)

		007087
6	BC	



PICTURE HOLDER



Clip Fix

Frameless Picture
Holder

80

Photo Gallery Frameless
Picture Frame

84

Picture Prop

85

Frameless Picture Holder

Normal glass 81

Anti-reflective glass 82

Polystyrene 83



PICTURE HOLDER



"Clip-Fix" Frameless Picture Holder, normal glass

Type of Glass	Reflex
---------------	--------

- frameless picture holder
- round ground, quality washed glass
- Clip-Fix-System to frame quick and simple
- Unobtrusive design for a timeless look
- matches every style



Frame Size/cm	Picture Size/cm	normal glass	Qty
10.5 x 15	7 x 10	063002	72
13 x 18	9 x 13	063004	46
15 x 21	10 x 15	063008	32
18 x 24	10 x 15	063010	25
18 x 27	13 x 18	063011	25
20 x 25	13 x 18	063012	23
20 x 20	13 x 13	063013	23
20 x 28	13 x 18	063014	21
20 x 30	13 x 18	063018	20
21 x 29.7 (A4)	15 x 21	063020	20
24 x 30	15 x 20	063022	20
25 x 38 (Digital)	20 x 27	063023	18
28 x 35	18 x 24	063026	14
30 x 30	20 x 20	063027	14



Frame Size/cm	Picture Size/cm	normal glass	Qty
29.7 x 42 (A3)	18 x 24	063028	254
30 x 40	20 x 28	063030	280
30 x 45	20 x 30	063032	230
40 x 40	28 x 28	063033	222
40 x 50	28 x 35	063036	170
40 x 60	30 x 45	063038	140
42 x 60	30 x 45	063039	124
50 x 50	35 x 35	063040	115
50 x 60	30 x 40	063042	115
50 x 70	30 x 45	063044	92
50 x 75	30 x 45	063045	83
60 x 80	40 x 60	063046	66
60 x 84	40 x 60	063047	63
62 x 93	42 x 60	063048	50
70 x 100	50 x 70	063050	47

■ = minimum order quantity
■ = novelty

BC = blister size
 HT = hangtag
 CB = packed in cardboard box

PO = polybag
 BA = banderol

Clip Fix



PICTURE HOLDER

"Clip-Fix" Frameless Picture Holder, anti-reflection glass

Type of Glass Antireflex

- frameless picture holder
- round ground, quality washed glass
- Clip-Fix-System to frame quick and simple
- Unobtrusive design for a timeless look
- matches every style



Frame Size/cm	Picture Size/cm	Antireflex glass	Qty
10.5 x 15	7 x 10	063102	72
13 x 18	9 x 13	063104	46
15 x 21	10 x 15	063108	32
18 x 24	10 x 15	063110	25
18 x 27	13 x 18	063111	25
20 x 25	13 x 18	063112	23
20 x 20	13 x 13	063113	23
20 x 28	13 x 18	063114	21
20 x 30	13 x 18	063118	20
21 x 29.7 (A4)	15 x 21	063120	20
24 x 30	15 x 20	063122	20
28 x 35	18 x 24	063126	14
30 x 30	20 x 20	063127	14



Frame Size/cm	Picture Size/cm	Antireflex glass	Qty
29.7 x 42 (A3)	18 x 24	063128	254
30 x 40	20 x 28	063130	280
30 x 45	20 x 30	063132	230
40 x 40	28 x 28	063133	222
40 x 50	28 x 35	063136	170
40 x 60	30 x 45	063138	140
42 x 60	30 x 45	063139	124
50 x 50	35 x 35	063140	115
50 x 60	30 x 40	063142	115
50 x 70	30 x 45	063144	92
50 x 75	30 x 45	063145	83
60 x 80	40 x 60	063146	66
60 x 84	40 x 60	063147	63
62 x 93	42 x 60	063148	50
70 x 100	50 x 70	063150	47



"Clip-Fix" Frameless Picture Holder, polystyrene

Type of Glass Polystyrene

- frameless picture holder
- The frame features an ultra-breakproof polystyrene disc (thickness: 1 mm) and is therefore ideal for kindergartens, schools and hospitals
- Clip-Fix-System to frame quick and simple
- Unobtrusive design for a timeless look
- matches every style



Frame Size/cm	Picture Size/cm	Polystyrene	Qty
21 x 29.7 (DIN A4)	15 x 21	061595	20
29.7 x 42 (DIN A3)	18 x 24	061596	20
40 x 50	28 x 35	061597	130
40 x 60	30 x 45	061598	119
50 x 70	30 x 45	061599	88
60 x 84	40 x 60	061600	43
70 x 100	50 x 70	061601	40

= minimum order quantity
 = novelty

BC = blister size
 HT = hangtag
 CB = packed in cardboard box

PO = polybag
 BA = banderol

Frameless Picture Holder

80

Photo Gallery Frameless Picture Holder

84

Picture Prop

85

Photo Gallery Frameless Picture Holder



"Clip-Fix" Photo Gallery, normal glass, 24 x 30 cm

Material	Glass
Frame Size	24 x 30 cm
Picture Size	10 x 15 cm
Picture Size 2	9 x 13 cm
Picture Size 3	3.5 x 4.5 cm
Picture Size 4	no specifications
Picture Size 5	no specifications

- Frameless photo gallery
- High-quality ground glass
- Clip-Fix system for quick and easy framing

	063000
20	BC



"Clip-Fix" Photo Gallery, normal glass, 28 x 35 cm

Material	Glass
Frame Size	28 x 35 cm
Picture Size	9 x 13 cm
Picture Size 2	10 x 15 cm
Picture Size 3	7 x 10 cm
Picture Size 4	9 x 9 cm
Picture Size 5	no specifications

- frameless Photo Gallery
- round ground, quality washed glass
- Clip-Fix-System to frame quick and simple

	063055
14	BC



"Clip-Fix" Photo Gallery, normal glass, 30 x 40 cm

Material	Glass
Frame Size	30 x 40 cm
Picture Size	9 x 13 cm
Picture Size 2	10 x 15 cm
Picture Size 3	7 x 10 cm
Picture Size 4	9 x 9 cm
Picture Size 5	3.5 x 4.5 cm

- Frameless photo gallery
- Ground, high-quality washed glass
- Clip-fix system for quick and easy framing

	063001
280	BC



"Clip-Fix" Photo Gallery, normal glass, 40 x 50 cm

Material	Glass
Frame Size	40 x 50 cm
Picture Size	9 x 13 cm
Picture Size 2	10 x 15 cm
Picture Size 3	10 x 10 cm
Picture Size 4	9 x 13 cm
Picture Size 5	no specifications

- With prepunched multiple passepartouts for 10 pictures

	063056
170	BC

Frameless Picture Holder
80
Photo Gallery Frameless Picture Holder
84
Picture Prop
85

Picture Prop



"Clip-Fix" Prop

Material	Metal
Frame Length	30 cm
Frame Width	24 cm
Colour	Silver

- elegant, nickel prop
- for Clip-Fix frames
- maximum frame size: 24 x 30 cm

		063100
3	BC	



Prop "Acryl",
36 pcs in display

Material	Acrylic
Frame Length	30 cm
Frame Width	24 cm
Colour	Transparent

- elegant prop
- for Clip-Fix frames
- maximum frame size: 24 x 30 cm
- frame not included

		063101
36	CB	



PICTURE HOLDER

Photo Gimmicks

Photo Ball/Cube

86

Photo Keyring Pendant

87

Memo Clip

88

Adhesive Postcard

Backing

89

**Photo Ball/
Cube**



PICTURE HOLDER



**"Amore" Photo Globe,
6 pieces in a display box**

Material	Acrylic
Number of Photos	2
Colour	Transparent
Colour Special Fluid	Transparent

- Colour Special Fluid: Transparent
- Set comprising 6 photo globes
- Filled with water and hearts (3x red, 3x silver)
- For 2 photos with a size of 6.5 x 6.5 cm

		034807
6	PO	



**"Amore"
Acrylic Frame,
10 x 15 cm**

Material	Acrylic
Number of Photos	1
Colour	Transparent
Colour Special Fluid	Transparent

- A creative gift in combination with your favourite photo
- Filled with water and red hearts
- For one photo

		057381
6	PO	

- Photo Ball/Cube 86
- Photo Keyring Pendant 87
- Memo Clip 88
- Adhesive Postcard Backing 89

**Photo Keyring
Pedant**



**"Fashion" Photo Keychain,
24 pieces in a display box**

Material	Acrylic
Photo Format	3.2 x 4.8 cm
Number	24

- 6 with pink glitter elements
- 6 with transparent glitter elements
- 6 with transparent and black glitter elements
- 6 with transparent, blue and purple glitter elements

		063177
24	CB	



**"Glimmer" Photo Keychain,
24 pieces in a display box**

Material	Acrylic
Photo Format	3.5 x 4.5 cm
Number	24

- For pictures in passport photo size (3.5 x 4.5 cm)
- Filled with coloured glitter elements
- Display box with photo keychains in 4 different colours
- 6 champagne-coloured pendants
- 6 turquoise pendants
- 6 pink pendants
- 6 silver pendants

		034749
24	CB	



**Acrylic Keyring Pendant,
small**

Material	Acrylic
Photo Format	2.8 x 4.3 cm
Number	24

- For mini photos in the format 2.8 x 4.3 cm
- 24 pieces in a display box

		063181
24	CB	



**Acrylic Keyring Pendant,
large**

Material	Acrylic
Photo Format	3.5 x 4.5 cm
Number	24

- For mini photos in the format 3.5 x 4.5 cm
- 24 pieces in a display box

		063182
24	CB	



PICTURE HOLDER

6 = minimum order quantity
 5 = novelty

BC = blister size
 HT = hangtag
 CB = packed in cardboard box

PO = polybag
 BA = banderol

Photo Gimmicks



PICTURE HOLDER



"Trendy" Photo Keychain, 20 pieces in a display box

Material	Artificial Leather
Photo Format	3.5 x 4.5 cm
Number	20

- For two photos in passport photo size (3.5 x 4.5 cm)
- Display box with photo keychains in 4 different colours
- 5 pendants in black
- 5 pendants in red
- 5 pendants in brown
- 5 pendants in silver

		031631
20	CB	



"Studio" Photo Keychain, 24 pieces in a display box

Material	Acrylic
Photo Format	3.5 x 4.5 cm
Number	24

- For mini photos in the format 3.5 x 4.5 cm

		034772
24	CB	



"Sophie" Photo Keychain, 24 pieces in a display box

Material	Metal
Photo Format	3.5 x 4.5 cm
Number	24

- Stylish aluminium frame
- For mini photos in the format 3.5 x 4.5 cm

		034832
24	CB	

Photo Ball/Cube

86

Photo Keyring Pendant

87

Memo Clip

88

Adhesive Postcard

Backing

89

Memo Clip



"Diamond" Memo Clip, 12 pieces in a display box

Material	Acrylic
Colour	Blue/Rose/Transparent

- Display box comprising 12 memo clips in different colours (transparent, pink, light blue)
- Eye-catcher in crystal look for putting on a desk

		034784
12	CB	



"Modern" Memo Clip, 24 pieces in a display box

Material	Plastic
Colour	Black/Gold/Silver/White

- Display box comprising 24 memo clips in different colours:
- 6x black, shiny
- 6x white, shiny
- 6x silver, matt
- 6x gold, matt

		034824
24	CB	

Photo Ball/Cube

86

Photo Keyring Pendant

87

Memo Clip

88

Adhesive Postcard

Backing

89

Adhesive Postcard Backing



Postcard Stickers for Pictures, display box comprising 36 packs

Picture Size	10 x 15 cm
Number	10

- Personal greeting in the form of a photo postcard
- The divided adhesive surface makes sticking the postcard on easy
- Self-adhesive

	007950
36	CB



PICTURE HOLDER



PHOTO ALBUMS



Ticklers

Ticklers
92

Ticklers

Suerte 93



PHOTO ALBUMS





"Suerte"

- Features
- ¹ 4 trendy designs: Camera, Peace, Cloud and Smiley
 - ² Peace and Smiley motif with lined pages
 - ³ Cloud and Camera motif with squared pages
 - ⁴ With 5 additional pockets
 - ⁵ With a magnetic fastener

	Album Size/cm	Number of Pages	Features	Orange	Qty
Magnet Notebook	13.5 x 12.5 x 1.3	70	1,2,3,4,5	002153	12

= minimum order quantity
 = novelty
 BC = blister size
 HT = hangtag
 CB = packed in cardboard box
 PO = polybag
 BA = banderol

Motif Albums

Motif Album
94

Motif Album

Birmingham	95
Classic	96
Corky	97
Crete	98
Curly	99
Fine Art	100
Fino	103
Fioretto	104
Idyll	105
La Fleur	106
Lily Tree	107
New York City	108
Relaxing	109
Rustico	110
Singo	111
Skies	112
Trebyly	113
Uni	114

PHOTO ALBUMS





"Birmingham"

Features

- ¹ With white photo cardboard pages and glassine interleaves
- ² Extravagant design made from high-quality textured paper with golden embossing
- ³ White glassine interleaves protect your most cherished memories and prevent photos on adjacent pages sticking together
- ⁴ White pages with pockets where you can easily insert photos
- ⁵ Display á 6 pieces each design

	Album Size/ cm	Number of Pages	Maximal Photonumbers/ Picture Size	Features	Burgundy	Blue	Green	Brown	Qty
Super Jumbo Album	33 x 35	100	600 / 10 x 15 cm	1,2,3	001748	001749	001750	-	12
Jumbo Album	30 x 30	100	400 / 10 x 15 cm	1,2,3	001752	001753	001754	001755	12
Slip-In Album	17.5 x 23	100	200 / 10 x 15 cm	1,4	001761	001762	-	-	12
Slip-In Album	15.5 x 20	100	200 / 9 x 13 cm	1,4	001756	-	-	-	12
Minimax Album	12 x 16,5	100	100 / 10 x 15 cm	1,4	001757	001758	-	-	12
Minimax Album	14,5 x 19	100	100 / 13 x 18 cm	1,4	001767	001768	-	-	12
Mini slip-in Album	13.5 x 19	24	24 / 13 x 18 cm	4,5	001774				24

= minimum order quantity
 = novelty

BC = blister size
 HT = hangtag
 CB = packed in cardboard box

PO = polybag
 BA = banderol

Motif Albums



PHOTO ALBUMS



"Classic"

Features

¹ Assortment carton á 3 pieces each design
(Burgundy/Dark Green/Dark Blue/Brown)

	Album Size/ cm	Maximal Photonumbers/ Picture Size	Features	Assorted	Qty
Slip-In/Flip Album	14.5 x 28.5	100 / 9 x 13 cm	1	060646	12
Slip-In/Flip Album	16.5 x 27	80 / 10 x 15 cm	1	060647	12



trendy cover in cork

"Corky"

Features

- ¹ White, extra-thick photo mounting paper
- ² With label area
- ³ White pages with pockets

	Album Size/ cm	Number of Pages	Maximal Photonumbers/ Picture Size	Features	Brown	Qty
Bookbound Album	30 x 20	60	120 / 10 x 15 cm	1	002341	12
Memo Album	22.5 x 22	100	200 / 10 x 15 cm	2,3	002342	12
Mini Slip-In Album	18 x 12	20	20 / 10 x 15 cm	3	002343	8

= minimum order quantity
 = novelty

BC = blister size
 HT = hangtag
 CB = packed in cardboard box

PO = polybag
 BA = banderol

Motif Albums



PHOTO ALBUMS



Black



Slate

"Crete"

Features

- ¹ White pages with pockets
- ² Original design with a trendy chalk look
- ³ The spiral is exactly adapted to the size of the album
- ⁴ The spiral fastener on the inside of the album prevents album sheets from falling out
- ⁵ White photo mounting paper

	Album Size/ cm	Number of Pages	Maximal Photonumbers/ Picture Size	Features	Slate	Black	Qty
Spiral Bound Album	28 x 24	50	100 / 10 x 15 cm	2,3,4,5	002227	002228	12
Memo Album	22.5 x 22	100	200 / 10 x 15 cm	1,2	002225	002226	12



"Curly"

Features

- ¹ With white photo cardboard pages and glassine interleaves
- ² Integrated sleeve for CDs
- ³ The inner pages match the album's design and come with a label area for customisation
- ⁴ Special pockets where you can easily insert photos

	Album Size/ cm	Number of Pages	Maximal Photonumbers/ Picture Size	Features	Lime	Dragon Fruit	Qty
XL Album	30 x 30	60	240 / 10 x 15 cm	1	010630	010632	14
Memo Album	22 x 22	100	200 / 10 x 15 cm	2,3,4	-	010635	12
Minimax Album	12.5 x 16.5	100	100 / 10 x 15 cm	4	-	010638	12

= minimum order quantity
 = novelty

BC = blister size
 HT = hangtag
 CB = packed in cardboard box

PO = polybag
 BA = banderol

Motif Albums



PHOTO ALBUMS



"Fine Art"

Features

- ¹ Cover made of high-quality, unicoloured textured paper
- ² The opening on the cover gives you the option to personalise the album or to put a photo of your own in
- ⁴ With a label area allowing for customisation
- ⁵ With a CD sleeve in the back for storing digital image data
- ⁶ White photo mounting paper that provides plenty of space for customising photos and other souvenirs

	Album Size/ cm	Number of Pages	Maximal Photonumbers/ Picture Size	Features	Grey	Blue	Qty
Bookbound Album	29 x 32	50	250 / 10 x 15 cm	1,2,5	002117	002118	16
Memo Album	22.5 x 22	80	160 / 10 x 15 cm	1,2,3,4	001704	-	14



"Fine Art"

Features

- ¹ The opening on the cover gives you the option to personalize the album or to put a photo of your own in
- ² Cover made of high-quality, unicoloured textured paper
- ³ The spiral binding gives the album a high-quality look
- ⁴ The spiral is exactly adapted to the size of the album thus preventing it from gaping open
- ⁵ The spiral fastener on the inside of the album prevents the album sheets from falling out

	Album Size/ cm	Number of Pages	Maximal Photonumbers/ Picture Size	Features	Turquoise	Pink	Taupe	Grey	Qty
Spiralbound Album	36 x 32	50	300 / 10 x 15 cm	1,2,3,4,5	010607	010608	010609	094874	18
Spiralbound Album	28 x 24	50	100 / 10 x 15 cm	1,2,3,4,5	113679	113680	113681	094879	12
Spiralbound Album	24 x 17	50	50 / 10 x 15 cm	1,2,3,4,5	113673	113674	113675	094884	12

	Album Size/ cm	Number of Pages	Maximal Photonumbers/ Picture Size	Features	Appel Green	Purple	Kiwi	Chalk	Qty
Spiralbound Album	36 x 32	50	300 / 10 x 15 cm	1,2,3,4,5	094870	094871	010610	002109	18
Spiralbound Album	28 x 24	50	100 / 10 x 15 cm	1,2,3,4,5	094875	094876	113682	002108	12
Spiralbound Album	24 x 17	50	50 / 10 x 15 cm	1,2,3,4,5	094880	094881	113676	002107	12

	Album Size/ cm	Number of Pages	Maximal Photonumbers/ Picture Size	Features	Black	Blue	Bordeaux	Azure	Qty
Spiralbound Album	36 x 32	50	300 / 10 x 15 cm	1,2,3,4,5	090140	090142	090144	010611	18
Spiralbound Album	28 x 24	50	100 / 10 x 15 cm	1,2,3,4,5	090145	090147	090149	113683	12
Spiralbound Album	24 x 17	50	50 / 10 x 15 cm	1,2,3,4,5	090150	090152	090154	113677	12

= minimum order quantity
 = novelty

BC = blister size
 HT = hangtag
 CB = packed in cardboard box

PO = polybag
 BA = banderol

Motif Albums



PHOTO ALBUMS



"Fine Art"

Features

- ¹ Cover made of unicoloured textured paper
- ² The opening on the cover gives you the option to personalise the album or to put a photo of your own in
- ³ The spiral binding gives the album a high-quality look
- ⁴ The spiral is exactly adapted to the size of the album thus preventing it from gaping open
- ⁵ The spiral fastener on the inside of the album prevents the album sheets from falling out
- ⁶ With white photo mounting paper and glassine interleaves

	Album Size/ cm	Number of Pages	Maximal Photonumbers/ Picture Size	Features	Grey	Kiwi	Qty
Spiral Album	36 x 32	50	300 / 10 x 15 cm	1,2,3,4,5,6	002113	002116	18
Spiral Album	28 x 24	50	100 / 10 x 15 cm	1,2,3,4,5,6	002112	002115	12
Spiral Album	24 x 17	50	50 / 10 x 15 cm	1,2,3,4,5,6	002111	002114	12



"Fino"

Features

- ¹ Stylish and calm natural design for cosy moments
- ² With a special high-gloss finish for highlighting the design of the cover
- ³ Inner pages of the cover with a matching design which gives the album a high-quality look
- ⁴ Polybag comprising 3 pieces per design

	Album Size/ cm	Number of Pages	Maximal Photonumbers/ Picture Size	Features	Pine Grey	White	Qty
Slip-In/Mini Album	17,5 x 12	24	24 / 10 x 15 cm	1,2,3,4	001845		6

= minimum order quantity
 = novelty

BC = blister size
 HT = hangtag
 CB = packed in cardboard box

PO = polybag
 BA = banderol

Motif Albums



PHOTO ALBUMS



"Fioretto"

Features

- ¹ Design with a coloured flower mix
- ² White pages with pockets where you can easily insert photos and label area for customisation
- ³ Bookbound which gives the album a high-quality touch
- ⁴ White glassine interleaves

	Album Size/ cm	Number of Pages	Maximal Photonumbers/ Picture Size	Features	Blue	Lilac	Qty
Memo Album	22 x 22	100	200 / 10 x 15 cm	1,2,3	002348	002350	12
Bookbound Album	25 x 25	50	50 / 10 x 15 cm	1,4	002346	002347	14





"Idyll"

Features

- ¹ With a special high-gloss finish for highlighting the design of the cover
- ² White pages with pockets where you can easily insert photos and label area for customisation
- ³ Hidden spiral binding that gives the album a high-quality look and protects the spine of the album
- ⁴ The spiral is exactly adapted to the size of the album thus preventing it from gaping open
- ⁵ Spiral fastener on the inside
- ⁶ White photo mounting paper that provides plenty of space for customising photos and other souvenirs

	Album Size/ cm	Number of Pages	Maximal Photonumbers/ Picture Size	Features	Turquoise	Cream	Qty
Memo Album	22.5 x 22.5	100	200 / 10 x 15 cm	1,2	001848	001847	12
Photo/Guest Album	25 x 19	40	80 / 10 x 15 cm	1,3,4,5,6	-	001849	24

 = minimum order quantity
 = novelty

BC = blister size
HT = hangtag
CB = packed in cardboard box

PO = polybag
BA = banderol

Motif Albums



PHOTO ALBUMS



"La Fleur"

Features

- ¹ Fashionable black-and-white design with graphical leaf pattern
- ² Inner sides made of white photo cardboard
- ³ Inner sides made of black photo cardboard
- ⁴ Including white glassine sheets
- ⁵ Including a CD pocket
- ⁶ 12 pcs per colour

	Album Size/ cm	Number of Pages	Maximal Photonumbers/ Picture Size	Features	White	Black	Qty
Jumbo Album	30 x 30	100	400 / 10 x 15 cm	1,3,4	002220	-	12
Jumbo Album	30 x 30	100	400 / 10 x 15 cm	1,2,4	-	002219	12
Memo Album	22,5 x 22,5	100	200 / 10 x 15 cm	1,5	002221	002222	12
Mini Slip-In Album	16,5 x 13	40	40 / 10 x 15 cm	1	002223	002229	8
Softcover Album	17,5 x 12	24	24 / 10 x 15 cm	1,6	002224		24



"Lily Tree"

Features

- ¹ Modern flower mix design
- ² White pages
- ³ With pockets where you can easily insert photos and label area for customisation
- ⁴ With a CD sleeve in the back for keeping digital copies of the photos
- ⁵ White glassine interleaves
- ⁶ With pockets where you can easily insert photos
- ⁷ In the following colours: white/orange, rose/brown, In the following colours: white/orange, rose/brown, brown/blue, blue/green brown/blue, blue/green

	Album Size/ cm	Number of Pages	Maximal Photonumbers/ Picture Size	Features	White	Rose	Brown	Blue	Qty
Jumbo Album	30 x 30	100	400 / 10 x 15 cm	2,5	002351	002352	002353	002354	12
Memo Album	22 x 22	100	200 / 10 x 15 cm	1,2,3,4	002355	002356	002357	002358	12
Flip Album	16.5 x 16.5	-	80 / 10 x 15 cm	1,6,7		002360			12
Soft Cover Album	12 x 16.5	36	36 / 10 x 15 cm	7		002359			24

= minimum order quantity
 = novelty

BC = blister size
 HT = hangtag
 CB = packed in cardboard box

PO = polybag
 BA = banderol

Motif Albums



PHOTO ALBUMS



"New York City"

Features

- ¹ Finely textured artificial leather with black stitching
- ² Silver metal corners give the album a business look and protect against external influences
- ³ The inner pages are refined with black fleece which gives the album a high-quality look and makes it pleasant to touch
- ⁴ Black pages with pockets where you can easily insert photos

	Album Size/ cm	Number of Pages	Maximal Photonumbers/ Picture Size	Features	Black	Qty
Slip-in Album	34 x 25	400	400 / 10 x 15 cm	1,2,3,4	001927	12
Slip-In Album	19 x 34.5	100	300 / 10 x 15 cm	1,2,3,4	001928	12
Slip-In Album	19 x 23.5	100	200 / 10 x 15 cm	1,2,3,4	001929	12
Slip-In Album	16.5 x 21	100	200 / 9 x 13	1,2,3,4	001930	12
Minimax Album	13 x 17.5	100	100 / 10 x 15 cm	1,2,3,4	001931	12





"Relaxing"

Features

- ¹ Album (portrait format) with a hard cover and black pages
- ² Display à 8 pieces each design

	Album Size/ cm	Number of Pages	Maximal Photonumbers/ Picture Size	Features	Coloured	Qty
Hardcover Album	12 x 16,5	24	24 / 10 x 15 cm	1, 2	010697	24

 = minimum order quantity
 = novelty

BC = blister size
HT = hangtag
CB = packed in cardboard box

PO = polybag
BA = banderol

Motif Albums



PHOTO ALBUMS



"Rustico"

Features

- ¹ Vintage style design
- ² White pages with pockets where you can easily insert photos and label area for customisation
- ³ With a CD sleeve in the back for keeping digital copies of the photos
- ⁴ Quick and compact storage of large amounts of photos
- ⁵ 10 tabs offer space for data
- ⁶ With a metal clip for labelling the box

	Album Size/ cm	Number of Pages	Maximal Photonumbers/ Picture Size	Features	Orange	Blue/White	Lilac	Qty
Memo Album	22.5 x 22.5	100	200 / 10 x 15 cm	1,2,3	002167	002168	002169	12
Storage Box	17 x 22 x 11	-	700 / 10 x 15 cm	1,4,5,6	002170	002171	002172	12



PHOTO ALBUMS

"Singo"

- Features
- ¹ Assortment carton à 3 pieces each design (Orange/Green/Pink/Aqua)
 - ² With white photo cardboard pages and glassine interleaves
 - ³ With label area for individual design
 - ⁴ Integrated sleeve for CDs
 - ⁵ Spine protected by covered spiral
 - ⁶ Display á 6 pieces each color (Orange/Green/Pink/Aqua)

	Album Size/ cm	Number of Pages	Maximal Photonumbers/ Picture Size	Features	Orange	Green	Pink	Aqua	Qty
Jumbo Album	30 x 30	100	400 / 10 x 15 cm	2	106252	106253	106254	106255	12
Memo Album	22 x 22	100	200 / 10 x 15 cm	3,4	106256	106257	106258	106259	12
Minimax Album	13 x 16.5	100	100 / 10 x 15 cm	-	106260	106261	106262	106263	12
Self-adhesive Album	28 x 31	20	60 / 10 x 15 cm	5	106264	106265	106266	106267	24
Flip-up Album	16.5 x 26.5	-	80 / 10 x 15 cm	1		106268			12
Softcover Album	12 x 16.5	36	36 / 10 x 15 cm	6		106269			24
Softcover Album	16 x 20	24	24 / 13 x 18 cm	6		106270			24

= minimum order quantity
 = novelty
 BC = blister size
 HT = hangtag
 CB = packed in cardboard box
 PO = polybag
 BA = banderol

Motif Albums



PHOTO ALBUMS



"Skies"

Features

- ¹ With a special high-gloss finish
- ² White photo mounting paper
- White glassine interleaves
- ⁴ With label area
- ⁵ White pages with pockets
- ⁶ Assortment carton à 12 pieces each design

	Album Size/ cm	Number of Pages	Maximal Photonumbers/ Picture Size	Features	Sascha		Qty
Book Bound Album	30 x 30	60	240 / 10 x 15 cm	1,2,3	002335	002336	14
Memo Album	22.5 x 22	100	200 / 10 x 15 cm	1,4,5	002337	002338	12
Baby Diary	12.5 x 16.5	24	24 / 10 x 15 cm	5,6	002339		24



"Trebly"

Features

- ¹ "Circles" design: glossy surface, with white inner pages and a white ribbon
- ² "Stone Hearts" design: with a window for your own photo, with glossy surface, white inner pages and a white ribbon
- ³ "Flowers" design: with glossy surface, flowers are highlighted by a glossy finish, with black inner pages which are held together by a cream-coloured elastic band
- ⁴ Display á 8 pieces each design

	Album Size/ cm	Number of Pages	Maximal Photonumbers/ Picture Size	Features	Coloured	Qty
Folding Book	12.5 x 17	-	12 / 10 x 15 cm	1,2,3,4	113664	24

= minimum order quantity
 = novelty

BC = blister size
 HT = hangtag
 CB = packed in cardboard box

PO = polybag
 BA = banderol

Motif Albums



PHOTO ALBUMS



"Uni"

Features

¹ White photo mounting paper

² White glassine interleave

³ Cardboard box comprising 4 blue, 4 burgundy, 3 lime and 3 grey albums

	Album Size/ cm	Number of Pages	Maximal Photonumbers/ Picture Size	Features	Blue/Burgundy/ Grey/Lime	Qty
Bookbound Album	30 x 30	100	400 / 10 x 15 cm	1,2,3	001823	14

Baby/Child

115

Baby/Child

Ayleen	116
Baby Feel	117
Baby Mix	118
Bernd	119
Dani	120
Joana, Luke, Jungle Animals	121
little Rabbit	122
Lasse	124
Liam, Nora	125
Michi	126
Moni/Tim	127
Nils	128
Rosi/Seppi	129
Sascha	130
Sina/Joschua	131

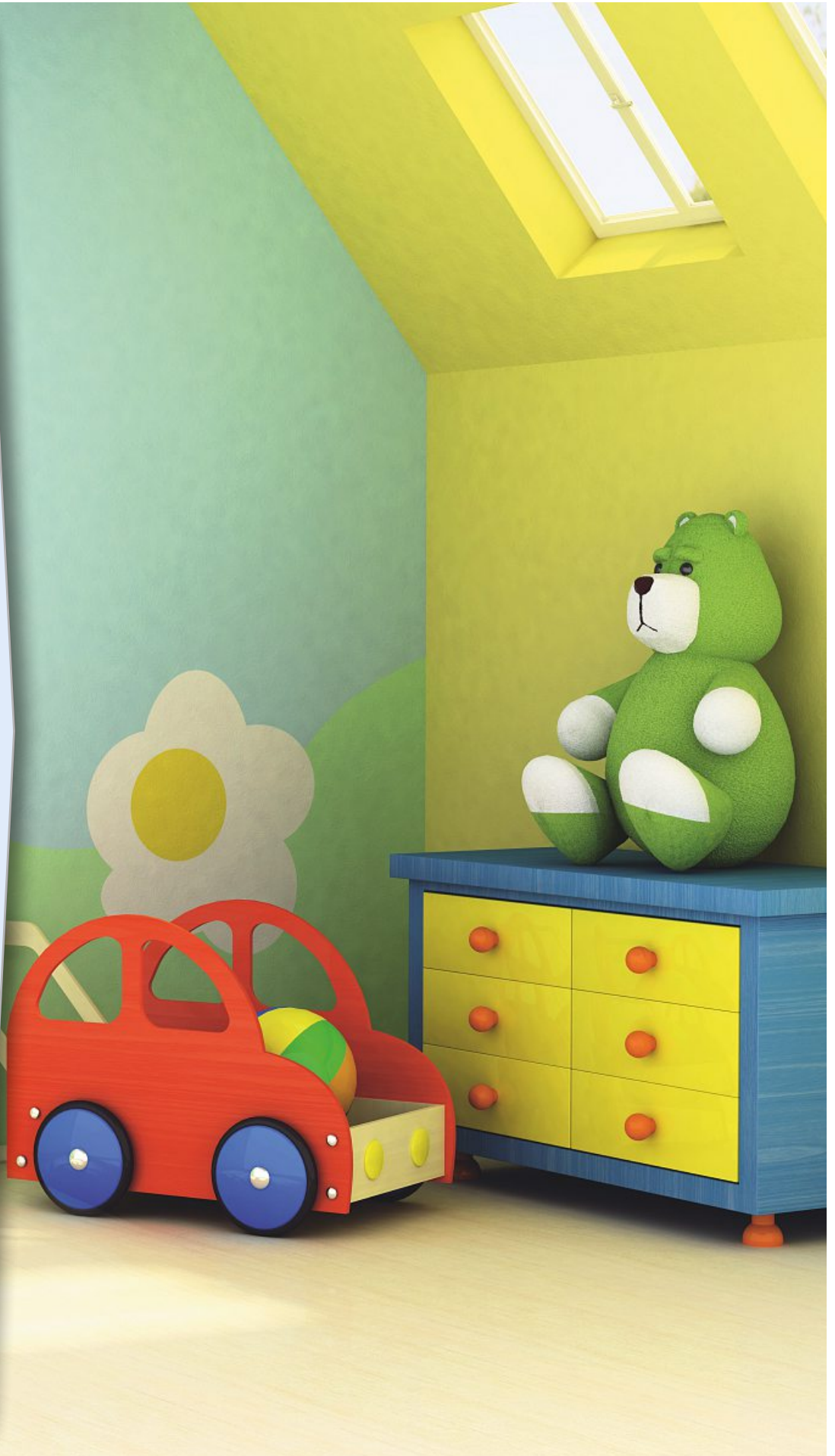




PHOTO ALBUMS

 = minimum order quantity
 = novelty

BC = blister size
HT = hangtag
CB = packed in cardboard box

PO = polybag
BA = banderol

June 2017

hama[®]

115



PHOTO ALBUMS



"Ayleen"

Features

- ¹ White pages with pockets
- ² With a CD sleeve in the back

	Album Size/ cm	Number of Pages	Maximal Photonumbers/ Picture Size	Features	Coloured	Qty
Memo Album	22.5 x 22	100	200 / 10 x 15 cm	1,2	002241	12



"Baby Feel"

Features

- ¹ With white photo mounting paper and glassine interleaves
- ² Number of pages: 60 + 2 with introduction text
- ³ Illustrated pages with introduction text for writing down important data and for recording exiting events like the first bath, parents, friends or for customisation

	Album Size/ cm	Number of Pages	Maximal Photonumbers/ Picture Size	Features	Baby	Baptism	Qty
Bookbound Album	29 x 32	60	300 / 10 x 15 cm	1,2	090111	090113	12
Baby Diary	20.5 x 28	44	-	3	090115	-	48

= minimum order quantity
 = novelty

BC = blister size
 HT = hangtag
 CB = packed in cardboard box

PO = polybag
 BA = banderol



PHOTO ALBUMS



„Sascha“

„Baby Feel“

"Baby Mix"

Features

- ¹ Leporellos with a sturdy cover and a white ribbon for closing them
- ² Cheerful rainbow design for little boys and girls with a special high-gloss finish for highlighting the pram
- ³ Sweet baby feet on a sepia coloured cover with a special high-gloss finish for emphasizing the baby motif
- ⁴ Display á 6 pieces each design

	Album Size/ cm	Number of Pages	Maximal Photonumbers/ Picture Size	Sascha	Baby Feel		Qty
Accordion fold	12.5 x 17	-	12 / 10 x 15 cm	1,2,4	1,3,4	010679	12



"Bernd"

Features

- ¹ Baby motif with teddy bear, paws, hearts and "Teddy Bear" as well as "Cute Bear" characters
- ² White photo mounting paper
- ³ White glassine interleaves
- ⁴ The inner pages of the cover are illustrated with lines and motifs of the cover, for writing down important data and for customisation
- ⁵ White pages with pockets where you can easily insert photos and label area for customisation
- ⁶ With a CD sleeve in the back for keeping digital copies of the photos
- ⁷ Inner pages of the cover with unobtrusive designs from the motifs of the cover

	Album Size/ cm	Number of Pages	Maximal Photonumbers/ Picture Size	Features	Brown	Qty
Bookbound Album	29 x 32	50	250 / 10 x 15 cm	1,2,3,4	002173	16
Memo Album	22.5 x 22	100	200 / 10 x 15 cm	1,5,6,7	002174	12
Slip-In Album	11.5 x 16.5	8	3x 8 / 10 x 15 cm	1	002175	50

= minimum order quantity
 = novelty

BC = blister size
 HT = hangtag
 CB = packed in cardboard box

PO = polybag
 BA = banderol



PHOTO ALBUMS



"Dani"

Features

- ¹ Cute pennant motif on soft pastel shades
- ² White pages with pockets where you can easily insert photos and label area for customisation
- ³ With a CD sleeve in the back for keeping digital copies of the photos
- ⁴ Also usable as practical gift packaging
- ⁵ With a metal clip for inserting index cards
- ⁶ Comes with 10 index cards

	Album Size/ cm	Number of Pages	Maximal Photonumbers/ Picture Size	Features	Lime	Qty
Memo Album	22,5 x 22	100	200 / 10 x 15 cm	1,2,3	002163	12
Photo Box	17 x 22 x 11	-	700 / 10 x 15 cm	1,4,5,6	002165	12



PHOTO ALBUMS

"Joana"

Features

- ¹ Princess design with a sweet pony in rose colour
- ² Funny wheel loader football motif
- ³ Colourful jungle motif with animals
- ⁴ White glassine interleaves

	Album Size/ cm	Number of Pages	Maximal Photonumbers/ Picture Size	Features	Pink	Qty
Bookbound Album	25 x 25	50	100 / 10 x 15 cm	1,4	002368	14
Bookbound Album	25 x 25	50	100 / 10 x 15 cm	2,4	002370	14
Bookbound Album	25 x 25	50	100 / 10 x 15 cm	3,4	002369	14

= minimum order quantity
 = novelty

BC = blister size
 HT = hangtag
 CB = packed in cardboard box

PO = polybag
 BA = banderol



"Little Rabbit"

Features

- ¹ Lovingly designed album cover with a little rabbit and balloons
- ² with glitter
- ³ Sturdy cover material with touch membrane; soft, silky surface
- ⁴ Inner pages of the cover with a matching design which gives the album a high-quality look
- ⁵ White, extra strong photo mounting paper that provides plenty of space for customising photos and other souvenirs
- ⁶ White glassine interleaves
- ⁷ With pockets and label area for customisation
- ⁸ Illustrated pages with introduction text
- ⁹ Leporellos with a sturdy cover and a white ribbon for closing them

	Album Size/ cm	Number of Pages	Maximal Photonumbers/ Picture Size	Features	Pink	Blue	Qty
Bookbound Album	29 x 32	50	250 / 10 x 15 cm	1,2,3,4,5,6	002263	002264	16
Memo Album	22.5 x 22	100	200 / 10 x 15 cm	1,2,3,4,7	002265	002266	12
Baby Diary	20.5 x 28	44	-	1,2,3,8	002267	002268	48
Leporello	13 x 17.5	-	12 / 10 x 15 cm	1,9	002237		12
Greeting Card	11.5 x 16.5	-	-	1	002176	002177	4



"Little Rabbit"

Features

¹ With magnetic fastener

² Box set comprising three boxes:

17 x 12 x 6,5 cm / 20 x 15 x 7,5 cm / 23 x 18 x 8,5 cm

	Album Size/ cm	Number of Pages	Maximal Photonumbers/ Picture Size	Features	Pink	Blue	Qty
Gift Boxes	-	-	-	1,2	002260	002261	16

■ = minimum order quantity
■ = novelty

BC = blister size
 HT = hangtag
 CB = packed in cardboard box

PO = polybag
 BA = banderol



PHOTO ALBUMS



"Lasse"

Features

- ¹ White photo mounting paper
- ² White glassine interleaves
- ³ White pages with pockets
- ⁴ With a CD sleeve

	Album Size/ cm	Number of Pages	Maximal Photonumbers/ Picture Size	Features	Pink	Blue	Beige	Qty
Bookbound Album	29 x 32	50	250 / 10 x 15 cm	1,2	002233	002234	002235	16
Memo Album	22.5 x 22	100	200 / 10 x 15 cm	3,4	002247	002248	002249	12



"Liam, Nora"

Features

- ¹ Special design for children with a sweet tiger motif
- ² Special design for children with a sweet hippo motif
- ³ White pages with pockets and label area

	Album Size/ cm	Number of Pages	Maximal Photonumbers/ Picture Size	Features	Coloured	Qty
Memo Album	22.5 x 22	100	200 / 10 x 15 cm	1,3	002372	12
Memo Album	22.5 x 22	100	200 / 10 x 15 cm	2,3	002371	12

= minimum order quantity
 = novelty

BC = blister size
 HT = hangtag
 CB = packed in cardboard box

PO = polybag
 BA = banderol



PHOTO ALBUMS



"Michi"

Features

- ¹ Label area allows for customisation
- ² For individual greetings
- ³ With a small cut-out to put in a photo of your own
- ⁴ set of 8 pieces

	Album Size/ cm	Number of Pages	Maximal Photonumbers/ Picture Size	Features	Orange	Qty
Memo Album	22 x 22	100	200 / 10 x 15 cm	1	113638	12
Photo/Greeting Card	11.5 x 16.5	-	-	2,3,4	002104	4



"Moni/Tim"

Features

- ¹ Blue album with cute motifs from the world of babies
- ² Cut-out with a refined workmanship gives the album a special touch; gives you the option to personalise the album or to put a photo of your own in
- ³ White pages with pockets where you can easily insert photos and label area for customisation
- ⁴ For individual greetings
- ⁵ With a small cut-out to put in a photo of your own

	Album Size/ cm	Number of Pages	Maximal Photonumbers/ Picture Size	Features	Moni	Tim	Qty
Memo Album	22,5 x 22,5	100	200 / 10 x 15 cm	1,2,3	001925	001926	12
Photo/Greeting Card	11.5 x 16.5	-	-	4,5	002105	002106	4

= minimum order quantity
 = novelty

BC = blister size
 HT = hangtag
 CB = packed in cardboard box

PO = polybag
 BA = banderol



PHOTO ALBUMS



"Nils"

Features

- ¹ With labelling strips for quick and easy storage
- ² Integrated sleeve for CDs and negatives

	Album Size/ cm	Number of Pages	Maximal Photonumbers/ Picture Size	Features	Brown	Qty
Memo Album	19 x 25	100	200 / 10 x 15 cm	1,2	106278	12



„Rosi“

„Seppi“

"Rosi/Seppi"

Features

- ¹ Cute dots motif with a checked pattern on a fabric appliqué
- ² Extra strong photo mounting paper that provides plenty of space for customising photos and other souvenirs
- ³ White glassine interleaves protect your most cherished memories and prevent photos on adjacent pages sticking together and becoming damaged
- ⁴ Cute dots motif with a pink and light blue checked pattern
- ⁵ Leporello with a sturdy cover and a white ribbon for closing it

	Album Size/ cm	Number of Pages	Maximal Photonumbers/ Picture Size	Features	Rosi	Seppi	Qty
Bookbound Album	29 x 32	50	250 / 10 x 15 cm	1,2,3	002230	002231	16
Leporello	13 x 17.5	-	12 / 10 x 15 cm	4,5	002232		12

= minimum order quantity
 = novelty

BC = blister size
 HT = hangtag
 CB = packed in cardboard box

PO = polybag
 BA = banderol



PHOTO ALBUMS

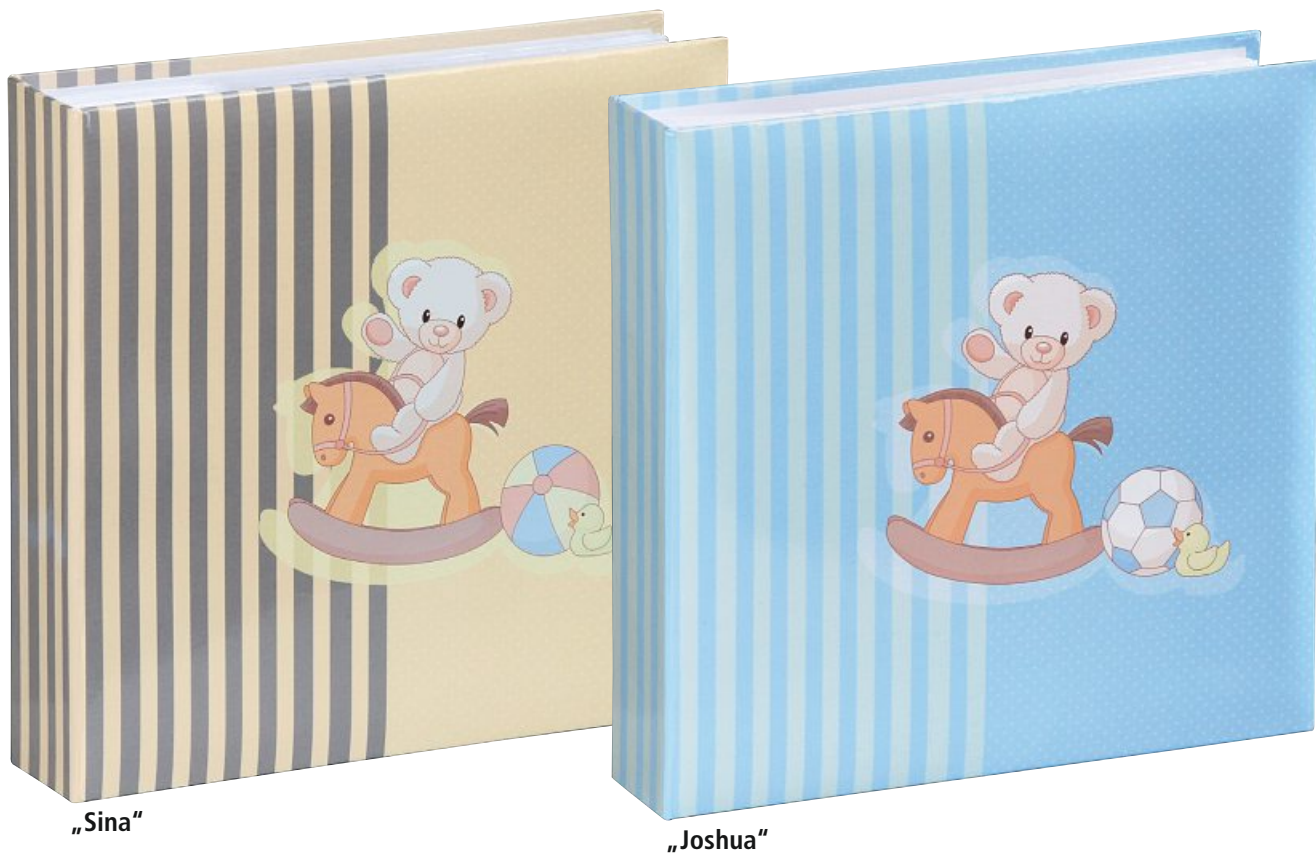


"Sascha"

Features

- ¹ With white glassine interleaves
- ² Illustrated double page for your personal data
- ³ With a special high-gloss finish for highlighting the pram
- ⁴ Illustrated pages
- ⁵ Labelled, illustrated pages give you the ability to personalise the album

	Album Size/ cm	Number of Pages	Maximal Photonumbers/ Picture Size	Features	Sascha	Qty
Book Bound Album	29 x 32	60	300 / 10 x 15 cm	1,2,3	010676	14
Baby Diary	20.5 x 28	44	-	3,4,5	010677	48



„Sina“

„Joshua“

"Sina/Joshua"

- Features
- ¹ With white photo mounting paper and glassine interleaves
 - ² Number of pages: 60 + 2 with introduction text
 - ³ Illustrated pages

	Album Size/ cm	Number of Pages	Maximal Photonumbers/ Picture Size	Features	Sina	Joshua	Qty
Memo Album	22,5 x 22,5	100	200 / 10 x 15 cm	1,2,3	010685	010686	12

= minimum order quantity
 = novelty

BC = blister size
 HT = hangtag
 CB = packed in cardboard box

PO = polybag
 BA = banderol

Wedding
132

Wedding

Almeria	133
Anzio	134
Caracas	135
Catania	136
Lazise	137
Livorno	138
Messina II	139
Savona	140
Venezia	141

PHOTO ALBUMS





"Almeria"

Features

- ¹ Typographically designed cover with modern refinement in rose gold colour
- ² High-quality cover material that does not soil easily with touch membrane
- ³ Ideal for weddings and many other anniversaries and occasions
- ⁴ Inner pages of the cover with a matching design which gives the album a high-quality look
- ⁵ White, extra-thick photo mounting paper that provides plenty of space for customising photos and other souvenirs
- ⁶ White glassine interleaves protect your most cherished memories and prevent photos on adjacent pages sticking together and becoming damaged

	Album Size/ cm	Number of Pages	Maximal Photonumbers/ Picture Size	Features	Rose	Qty
Bookbound Album	29 x 32	50	250 / 10 x 15 cm	1,2,3,4,5,6	002098	16
Bookbound Album	30 x 20	60	120 / 10 x 15 cm	1,2,3,4,5	002099	12

= minimum order quantity
 = novelty

BC = blister size
 HT = hangtag
 CB = packed in cardboard box

PO = polybag
 BA = banderol



PHOTO ALBUMS



"Anzio"

Features

- ¹ Textured cover with a romantic heart design, for the beautiful moments in life
- ² With a special high-gloss finish for highlighting the design of the cover
- ³ Inner pages of the cover with an unobtrusive design which gives the album a high-quality look
- ⁴ White, extra thick photo mounting paper that provides plenty of space for customising photos and other souvenirs
- ⁵ White pages with pockets where you can insert photos and label area for customisation
- ⁶ White pages with pockets where you can easily insert photos

	Album Size/ cm	Number of Pages	Maximal Photonumbers/ Picture Size	Features	Cream	Qty
Photo/Guest Album	30 x 20	60	120 / 10 x 15 cm	1,2,3,4	002001	12
Memo Album	22,5 x 22	100	200 / 10 x 15 cm	1,2,3,5	002002	12
Mini Slip-In Album	18 x 12	20	20 / 10 x 15 cm	1,2,3,6	002003	8



"Caracas"

Features

- ¹ Cover made of durable, stylish material, with a pattern in matching tones
- ² Inner pages of the cover with an unobtrusive design which gives the album a high-quality look
- ³ First double page with lines and a romantic design, ideal for customisation or important data
- ⁴ White, extra thick photo mounting paper that provides plenty of space for customising photos and other souvenirs
- ⁵ White glassine interleaves protect your most cherished memories and prevent photos on adjacent pages sticking together
- ⁶ Slipcase: convenient storage option that also provides protection

	Album Size/ cm	Number of Pages	Maximal Photonumbers/ Picture Size	Features	Gold	Silver	Qty
Bookbound Album	29 x 32	50	250 / 10 x 15 cm	1,2,3,4,5,6	001730	001731	12
Photo/Guest Album	30 x 20	60	120 / 10 x 15 cm	1,2,4,6	001732	001733	12

= minimum order quantity
 = novelty

BC = blister size
 HT = hangtag
 CB = packed in cardboard box

PO = polybag
 BA = banderol



PHOTO ALBUMS



"Catania"

Features

- ¹ With a label area for data and anecdotes as well as for customization
- ² CD sleeve included
- ³ With white photo mounting paper and glassine interleaves
- ⁴ Offers space for photos and much more souvenirs

	Album Size/ cm	Number of Pages	Maximal Photonumbers/ Picture Size	Features	Grey	Qty
Bookbound Album	29 x 32	60	300 / 10 x 15 cm	3,4	031034	14
Memo Album	22 x 22	100	200 / 10 x 15 cm	1,2	031036	12



"Lazise"

- Features
- ¹ Extra strong, white photo mounting paper
 - ² White glassine interleaves protect your most cherished memories
 - ³ White pages with pockets and label area
 - ⁴ With a CD sleeve
 - ⁵ 4 different water-colour hearts in gold, rose and red colour

	Album Size/ cm	Number of Pages	Maximal Photonumbers/ Picture Size	Features	Pink	Gold	Qty
Bookbound Album	29 x 32	50	250 / 10 x 15 cm	1,2	002361	002363	16
Memo Album	22.5 x 22	100	200 / 10 x 15 cm	3,4	002362	002364	12
Soft Cover Album	12.5 x 16.5	24	24 / 10 x 15 cm	5	002365		24

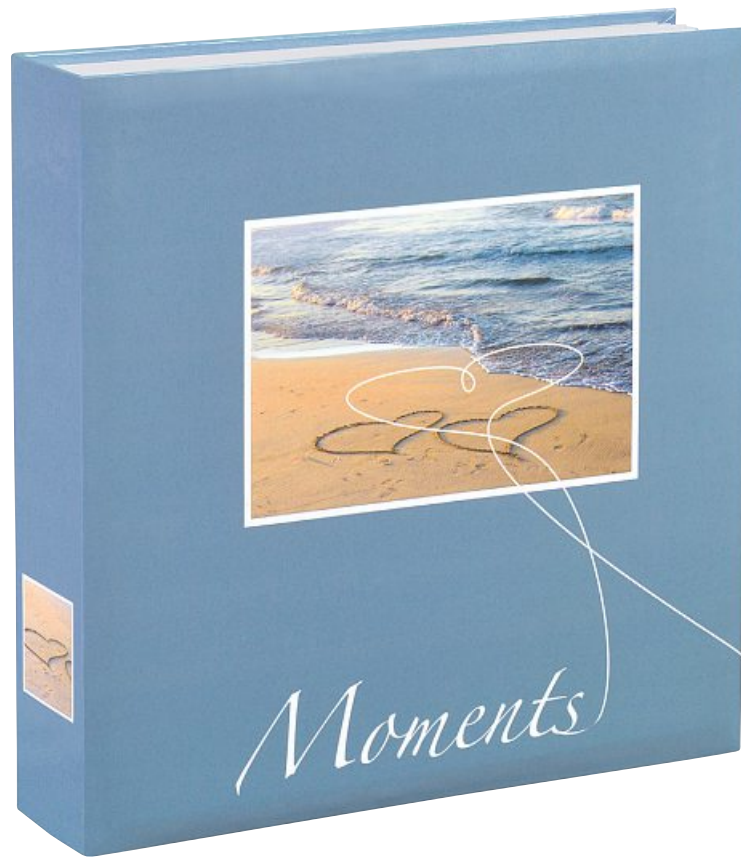
= minimum order quantity
 = novelty

BC = blister size
 HT = hangtag
 CB = packed in cardboard box

PO = polybag
 BA = banderol



PHOTO ALBUMS



"Livorno"

Features

- ¹ With a label area for quick and easy storage
- ² Integrated sleeve for CDs

	Album Size/ cm	Number of Pages	Maximal Photonumbers/ Picture Size	Features	Blue	Qty
Memo Album	22 x 22	100	200 / 10 x 15 cm	1,2	010674	12



"Messina II"

Features

- ¹ Stylish and durable cover with a filigree wave structure
- ² Inner pages of the cover with an unobtrusive design which gives the album a high-quality look
- ³ First double page with lines and a romantic design
- ⁴ White, extra thick photo mounting paper
- ⁵ White glassine interleaves
- ⁶ Slipcase: convenient storage option that also provides protection

	Album Size/ cm	Number of Pages	Maximal Photonumbers/ Picture Size	Features	Champagne	Qty
Bookbound Album	29 x 32	50	250 / 10 x 15 cm	1,2,3,4,5,6	002121	12
Photo and Guest Album	30 x 20	60	120 / 10 x 15 cm	1,2,4,6	002122	12

= minimum order quantity
 = novelty

BC = blister size
 HT = hangtag
 CB = packed in cardboard box

PO = polybag
 BA = banderol



PHOTO ALBUMS



"Savona"

Features

- ¹ Cover with high-quality textured paper and glittering silver embossing
- ² Special cut-outs give you the option to personalise the album or to put photos of your own in
- ³ White, extra thick photo mounting paper that provides plenty of space for customising photos and other souvenirs
- ⁴ White glassine interleaves protect your most cherished memories and prevent photos on adjacent pages sticking together and becoming damaged
- ⁵ with a sturdy cover and a white ribbon for closing it
- ⁶ Stylish cover made of durable and high-quality textured paper

	Album Size/ cm	Number of Pages	Maximal Photonumbers/ Picture Size	Features	Pink	Qty
Bookbound Album	30 x 33	50	250 / 10 x 15 cm	1,2,3,4	010689	14
Leporello	17 x 22	-	12 / 15 x 20 cm	5,6	002087	8
Leporello	15 x 20.5	-	12 / 13 x 18 cm	5,6	002084	8



"Venezia"

Features

- ¹ Cover with white, shiny fabric and stylish blind embossing (heart)
- ² Inner pages of the cover with a matching design which gives the album a high-quality look
- ³ First double page with lines and a romantic design, ideal for customisation or important data
- ⁴ White, extra thick photo mounting paper that provides plenty of space for customising photos and other souvenirs
- ⁵ White glassine interleaves protect your most cherished memories and prevent photos on adjacent pages sticking together
- ⁶ Slipcase: convenient storage option that also provides protection
- ⁷ White pages with pockets where you can easily insert photos
- ⁸ Inner pages of the cover with white fleece which gives the album a high-quality look and a special touch

	Album Size/ cm	Number of Pages	Maximal Photonumbers/ Picture Size	Features	White	Qty
Bookbound Album	29 x 32	50	250 / 10 x 15 cm	1,2,3,4,5,6	001775	12
Photo/Guest Album	30 x 20	60	120 / 10 x 15 cm	1,2,4,6	001776	12
Mini slip-in Album	11,5 x 16	20	20 / 10 x 15 cm	7,8	001777	8

= minimum order quantity
 = novelty

BC = blister size
 HT = hangtag
 CB = packed in cardboard box

PO = polybag
 BA = banderol

Holiday

Holiday
142

Holiday

La Vida	143
Scenery	144
Sea Shells	145

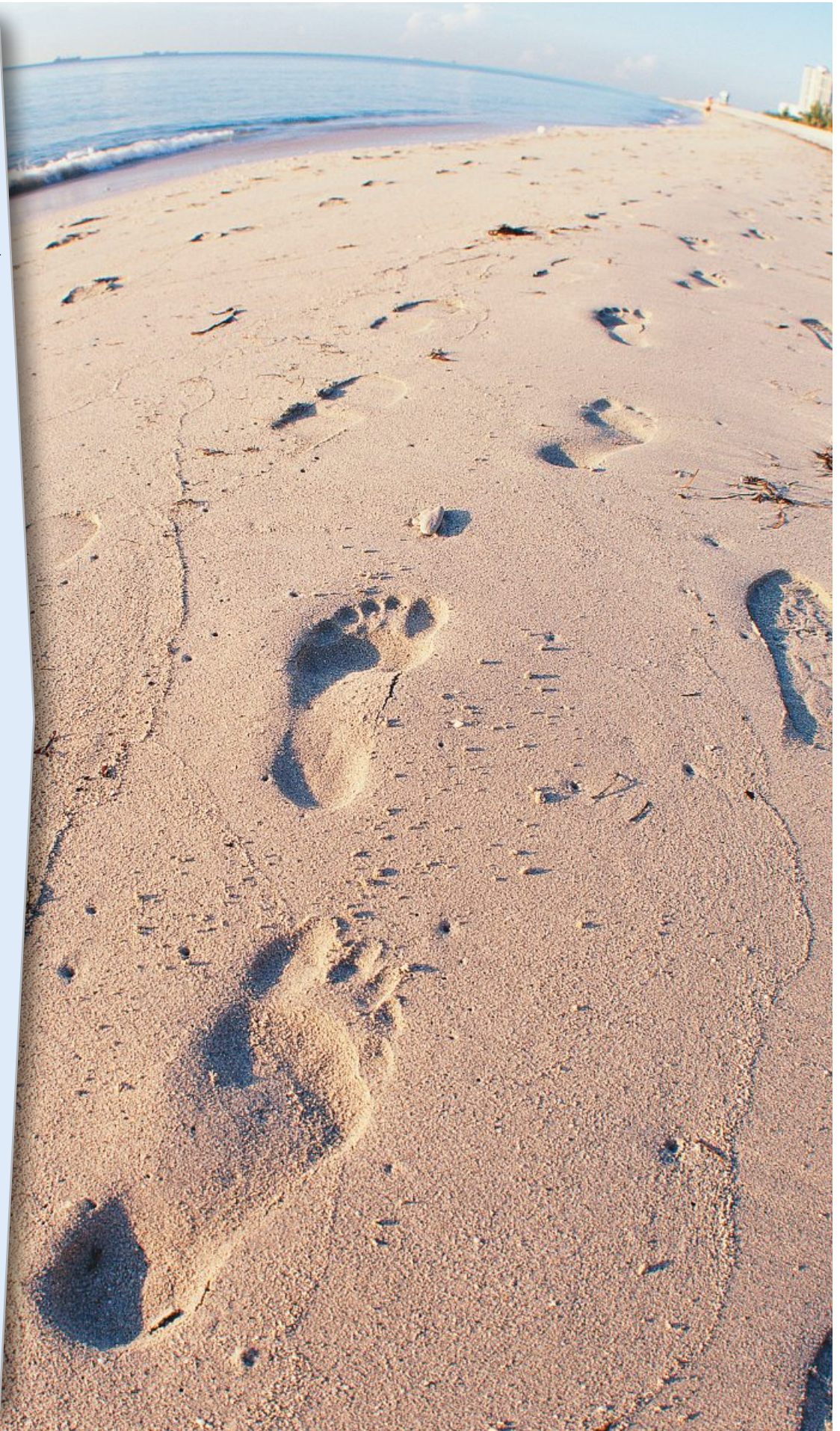


PHOTO ALBUMS



"La Vida"

Features

- ¹ With white photo cardboard pages and glassine interleaves
- ² With a label area for data and anecdotes as well as for customisation
- ³ Integrated sleeve for CDs
- ⁴ With a special high-gloss finish for highlighting the design of the cover
- ⁵ The opening on the cover gives you the option to put a photo of your own in as well as the ability to personalise the album

	Album Size/ cm	Number of Pages	Maximal Photonumbers/ Picture Size	Features	Green	Sand	Aquamarine	Qty
Bookbound Album	26 x 26	60	120 / 10 x 15 cm	1,3,4,5	010622	010624	-	14
Memo Album	22 x 22	100	200 / 10 x 15 cm	2,3,4,5	010623	-	010627	12

= minimum order quantity
 = novelty

BC = blister size
 HT = hangtag
 CB = packed in cardboard box

PO = polybag
 BA = banderol



PHOTO ALBUMS



"Scenery"

Features

- ¹ With white photo mounting paper and glassine interleaves
- ² With label area for customization and individual design (anecdotes, etc.)
- ³ Integrated sleeve for CDs

	Album Size/ cm	Number of Pages	Maximal Photonumbers/ Picture Size	Features	Orange	Beige	Qty
Memo Album	22 x 22	100	200 / 10 x 15 cm	1,2	106284	-	12



"Sea Shells"

Features

- ¹ With white photo mounting paper and glassine interleaves
- ² With label area for customization and individual design (anecdotes, etc.)
- ³ Integrated sleeve for CDs

	Album Size/ cm	Number of Pages	Maximal Photonumbers/ Picture Size	Features	Beige	Qty
Bookbound Album	29 x 32	60	300 / 10 x 15 cm	1	106279	12
Memo Album	22 x 22	100	200 / 10 x 15 cm	2,3	106280	12

= minimum order quantity
 = novelty

BC = blister size
 HT = hangtag
 CB = packed in cardboard box

PO = polybag
 BA = banderol



RING ALBUMS



Ring Albums

Ring Binder/Ring Folder

148

Album Pages

148

Photo Sleeve

149

Slide Sleeves

150

Negative Sleeve

151

Ring Binder/ Ring Folder

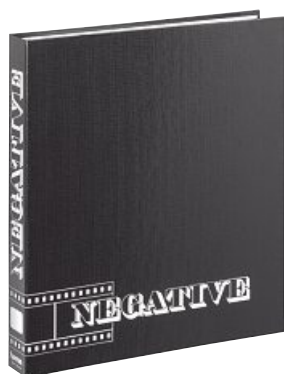


File for Negatives, with
slipcase, 29 x 32,5 cm

Binding	Laminated Art Print
Mechanics	4 Ring Mechanic
Format	29 x 32,5 cm
Maximum Sheet Size	260 x 310 mm
Spine Width	80 mm
Colour	Grey

- Ideal for photos, negatives or slides
- Stylish surface with linen finish
- Durable
- Can be wiped clean
- The sturdy slipcase protects the contents against dust and external influence

		002298
7	CB	



File for Negatives, black,
29 x 32,5 cm

Binding	Laminated Art Print
Mechanics	4 Ring Mechanic
Format	29 x 32,5 cm
Maximum Sheet Size	260 x 310 mm
Spine Width	40 mm
Colour	Black

- Ideal for photos, negatives or slides
- Stylish surface with linen finish
- Durable
- Can be wiped clean

With 25 negative sleeves (2250)		009620
25	CB	
		009003
16	CB	

Ring Binder/Ring Folder

148

Album Pages

148

Photo Sleeve

149

Slide Sleeves

150

Negative Sleeve

151

Album Pages



Card Pages for Ring Binder Photo Albums, A4, white

Filing Margin Perforation	4 Way
Sheet	10
Size	230 x 308 mm
Colour	White

- The traditional method of storing photos
- Both sides of the matt card pages can be used
- For differently sized pictures and souvenirs (tickets, town maps, coins, etc.)
- Photos can be mounted with adhesive, mounting corners or tapes
- Any arrangement possible
- Punched binding edge
- With glassine paper (linen structure)

		007975
80	PO	



Ring Binder/Ring Folder

148

Album Pages

148

Photo Sleeve

149

Slide Sleeves

150

Negative Sleeve

151

Photo Sleeve



Photo Sleeves, A4, clear, 9 x 13 cm

Format	Vertical Format
Number of Photos per Sleeve	8
Number of Sleeves	10
Picture Size	9 x 13 cm
Sheet Length	297 mm
Sheet Width	211 mm
Colour	Transparent

- Immensely practical system: simply insert the photo and you're done

		009776
15	PO	



Photo Sleeves, A4, clear, 10 x 15 cm

Format	Vertical Format
Number of Photos per Sleeve	8
Number of Sleeves	10
Picture Size	10 x 15 cm
Sheet Length	314 mm
Sheet Width	237 mm
Colour	Transparent

- Immensely practical system: simply insert the photo and you're done

		009777
18	PO	



Photo Sleeves, A4, white, 9 x 13 cm

Format	Vertical Format
Number of Photos per Sleeve	8
Number of Sleeves	10
Picture Size	9 x 13 cm
Sheet Length	297 mm
Sheet Width	211 mm
Colour	White

- Immensely practical system: simply insert the photo and you're done

		009786
10	PO	



Photo Sleeves, A4, clear, 13 x 18 cm

Format	Horizontal Format
Number of Photos per Sleeve	4
Number of Sleeves	10
Picture Size	13 x 18 cm
Sheet Length	297 mm
Sheet Width	211 mm
Colour	Transparent

- Immensely practical system: simply insert the photo and you're done

		009778
15	PO	



Photo Sleeves, A4, white, 10 x 15 cm

Format	Vertical Format
Number of Photos per Sleeve	8
Number of Sleeves	10
Picture Size	10 x 15 cm
Sheet Length	314 mm
Sheet Width	237 mm
Colour	White

- Immensely practical system: simply insert the photo and you're done

		009787
12	PO	



Photo Sleeves, A4, white, 10 x 15 cm

Format	Horizontal Format
Number of Photos per Sleeve	4
Number of Sleeves	10
Picture Size	10 x 15 cm
Sheet Length	297 mm
Sheet Width	211 mm
Colour	White

- Immensely practical system: simply insert the photo and you're done

		009782
15	PO	



PHOTO ALBUMS

= minimum order quantity
 = novelty

BC = blister size
HT = hangtag
CB = packed in cardboard box

PO = polybag
BA = banderol

Ring Albums



Photo Sleeves, A4, black, 10 x 15 cm

Format	Vertical Format
Number of Photos per Sleeve	8
Number of Sleeves	10
Picture Size	10 x 15 cm
Sheet Length	314 mm
Sheet Width	237 mm
Colour	Black

- Immensely practical system: simply insert the photo and you're done

		009797
10	PO	

Ring Binder/Ring Folder	148
Album Pages	148
Photo Sleeve	149
Slide Sleeves	150
Negative Sleeve	151

Slide Sleeves



Slide Sleeves for Mounted Slides

Foil Thickness	140 µ/180 µ
Number of Sleeves	100
Number of Slides per Sleeve	20
Sheet Length	310 mm
Sheet Width	250 mm
Slide Format	5 x 5 cm
Slide Thickness	3.2 mm

- Protect your valuable slides against outside influences

Number of Sleeves: 12	002014
12	PO
Number of Sleeves: 100	002015
7	CB



Slide Sleeves for Mounted Slides

Foil Thickness	140 µ/180 µ
Number of Slides per Sleeve	20
Sheet Length	310 mm
Sheet Width	250 mm
Slide Format	5 x 5 cm
Slide Thickness	3.2 mm

- Protect your valuable slides against outside influences
 - For 20 slide frames, thickness: up to 2.3 mm, without glass
 - Clear

Number of Sleeves: 12	002004
12	PO

Ring Binder/Ring Folder

148

Album Pages

148

Photo Sleeve

149

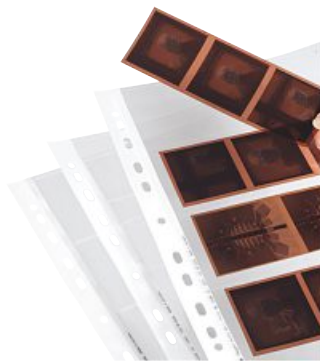
Slide Sleeves

150

Negative Sleeve

151

Negative Sleeve



Negative Sleeves, medium size format, acetate

Material	Acetate Clear (ACE)
Number of Negatives per Sleeve	12
Number of Sleeves	100
Sheet Length	310 mm
Sheet Width	260 mm

- For protecting your valuable negatives against external influences
- For 4 film strips with 3 negatives each, up to 6 x 7 cm/with 2 negatives each, up to 6 x 9 cm

002289

14 CB



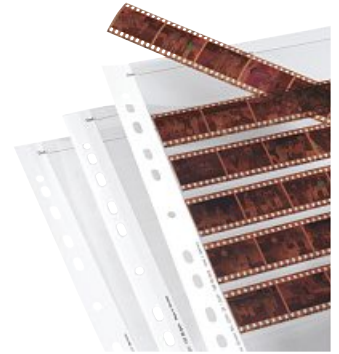
Negative Sleeves, small size format, acetate

Material	Acetate Clear (ACE)
Number of Negatives per Sleeve	42
Number of Slides per Sleeve	100
Sheet Length	310 mm
Sheet Width	260 mm

- For protecting your valuable negatives against external influences
- For 7 film strips with 6 24x36 mm small format negatives each

002281

14 CB



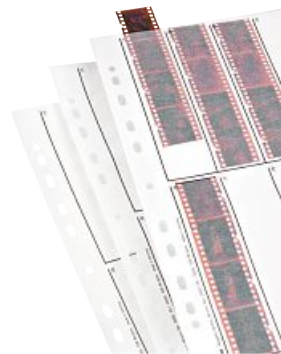
Negative Sleeves, medium size format, acetate

Material	Acetate Clear (ACE)
Number of Negatives per Sleeve	42
Number of Sleeves	25
Sheet Length	310 mm
Sheet Width	260 mm

- For protecting your valuable negatives against external influences
- For 7 film strips with 6 24x36 mm small format negatives each

002280

15 PO



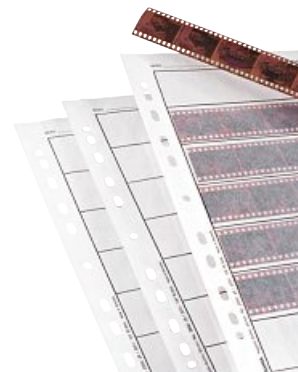
Negative Sleeves, small size format, glassine

Material	Glassine Matt (PER)
Number of Negatives per Sleeve	40
Number of Sleeves	100
Sheet Length	315 mm
Sheet Width	250 mm

- For protecting your valuable negatives against external influences
- For 10 film strips with 4 24x36 mm small format negatives each

002253

14 CB



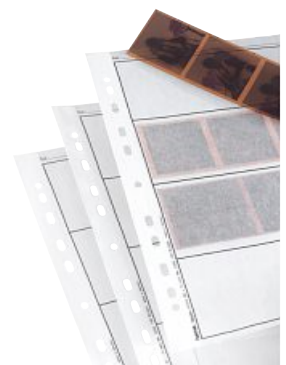
Negative Sleeves, small size format, glassine

Material	Glassine Matt (PER)
Number of Negatives per Sleeve	42
Number of Sleeves	100
Sheet Length	310 mm
Sheet Width	260 mm

- For protecting your valuable negatives against external influences
- For 7 film strips with 6 24x36 mm small format negatives each

002251

14 CB



Negative Sleeves, glassine

Material	Glassine Matt (PER)
Number of Negatives per Sleeve	16
Number of Sleeves	100
Sheet Length	300 mm
Sheet Width	230 mm

- For protecting your valuable negatives against external influences
- For 4 film strips with 4 small format negatives each, 24 x 36 mm, incl. tabs/for 4 film strips with 3 medium format negatives each, 6 x 7 cm

002257

14 CB



PHOTO ALBUMS

■ = minimum order quantity
■ = novelty

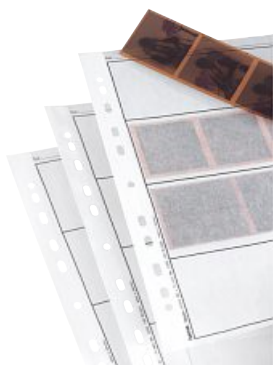
BC = blister size
HT = hangtag
CB = packed in cardboard box

PO = polybag
BA = banderol

Ring Albums



PHOTO ALBUMS

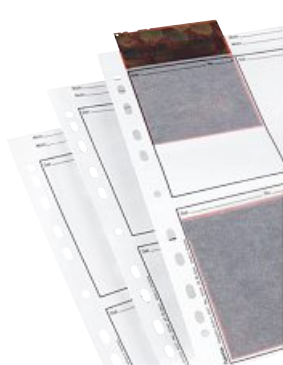


Negative Sleeves, medium size format, glassine

Material	Glassine Matt (PER)
Number of Negatives per Sleeve	12
Number of Sleeves	100
Sheet Length	310 mm
Sheet Width	260 mm

- For protecting your valuable negatives against external influences
- For 4 film strips with 3 negatives each, up to 6 x 7 cm/with 2 negatives each, up to 6 x 9 cm

002259	
14	CB

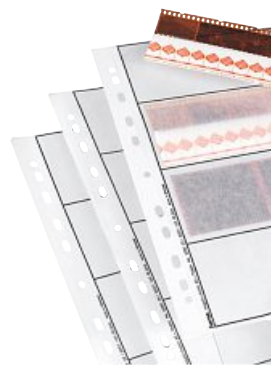


Negative Sleeves, large size format, glassine, matt

Material	Glassine Matt (PER)
Number of Negatives per Sleeve	4
Number of Sleeves	25
Sheet Length	300 mm
Sheet Width	230 mm

- Protect your valuable negatives against outside influences
- For 4 negatives/slides (9 x 12 cm/4 x 5")

002244	
15	PO

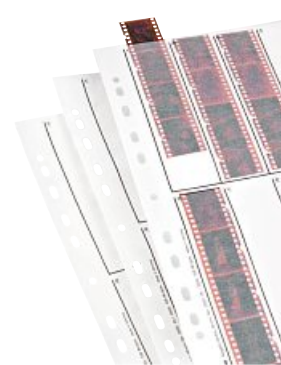


Negative Sleeves, glassine

Material	Glassine Matt (PER)
Number of Negatives per Sleeve	16
Number of Sleeves	25
Sheet Length	300 mm
Sheet Width	230 mm

- For protecting your valuable negatives against external influences
- For 4 film strips with 4 small format negatives each, 24 x 36 mm, incl. tabs/for 4 film strips with 3 medium format negatives each, 6 x 6 cm

002256	
15	PO



Negative Sleeves, small size format, glassine

Material	Glassine Matt (PER)
Number of Negatives per Sleeve	40
Number of Sleeves	25
Sheet Length	315 mm
Sheet Width	250 mm

- For protecting your valuable negatives against external influences
- For 10 film strips with 4 24x36 mm small format negatives each

002252	
15	PO



Negative Sleeves, small size format, glassine

Material	Glassine Matt (PER)
Number of Negatives per Sleeve	42
Number of Sleeves	25
Sheet Length	310 mm
Sheet Width	260 mm

- For protecting your valuable negatives against external influences
- For 7 film strips with 6 24x36 mm small format negatives each

002250	
15	PO

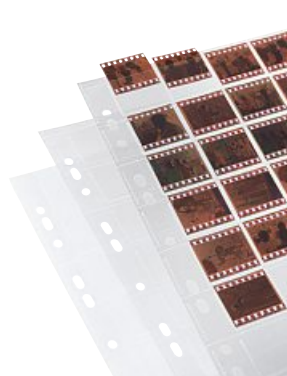


Negative Sleeves, small size format, polypropylene

Material	Polypropylene (PP)
Number of Negatives per Sleeve	40
Number of Sleeves	25
Sheet Length	315 mm
Sheet Width	250 mm

- For protecting your valuable negatives against external influences
- For 10 film strips with 4 24x36 mm small format negatives each
- Clear

002051	
15	CB

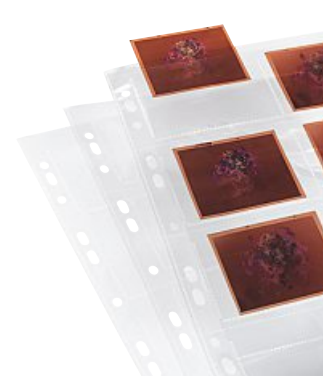


Negative Sleeves, small size format, polypropylene

Material	Polypropylene (PP)
Number of Negatives per Sleeve	40
Number of Sleeves	25
Sheet Length	300 mm
Sheet Width	230 mm

- Protect your valuable negatives against outside influences
- For 40 single negatives or unmounted slides (24 x 36 mm)
- Clear

002032	
12	PO



Negative Sleeves, medium size format, polypropylene

Material	Polypropylene (PP)
Number of Negatives per Sleeve	8
Number of Sleeves	25
Sheet Length	300 mm
Sheet Width	230 mm

- Protect your valuable negatives against outside influences
- For 8 negatives/slides (6 x 7 cm, 6.5 x 9 cm)
- Clear

002040	
12	PO

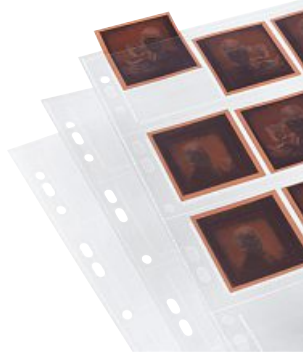


Negative Sleeves, small size format, polypropylene

Material	Polypropylene (PP)
Number of Negatives per Sleeve	40
Number of Sleeves	25
Sheet Length	315 mm
Sheet Width	250 mm

- For protecting your valuable negatives against external influences
- For 10 film strips with 4 24x36 mm small format negatives each
- Clear

		002052
15	PO	



Negative Sleeves, medium size format, polypropylene

Material	Polypropylene (PP)
Number of Negatives per Sleeve	12
Number of Sleeves	25
Sheet Length	300 mm
Sheet Width	230 mm

- Protect your valuable negatives against outside influences
- For 12 negatives/slides (6 x 6 cm)
- Clear

		002038
12	PO	



Negative Sleeves, small size format, glassine

Material	Glassine Matt (PER)
Number of Negatives per Sleeve	40
Number of Sleeves	20
Sheet Length	290 mm
Sheet Width	230 mm

- For protecting your valuable negatives against external influences
- For 10 film strips with 4 24x36 mm small format negatives each and an index print

		002262
15	PO	



Negative Sleeves, small size format, polypropylene

Material	Polypropylene (PP)
Number of Negatives per Sleeve	42
Number of Sleeves	25
Sheet Length	310 mm
Sheet Width	260 mm

- For protecting your valuable negatives against external influences
- For 7 film strips with 6 24x36 mm small format negatives each
- Clear

		002050
10	PO	



CREATIVE ACCESSORIES



Creative Accessories

Cutting Machine

156

Paper Trimmer

157

Glue Dispenser

158

Adhesive dots

160

Photo Tapes

160

Adhesive Photo Corners

161

Photo Glue

162

Pen

162

Cutting Machine



Lever Cutter "ProCut S 330 Plus"

Cut Height	1 mm
Cut Length	330 mm

- Lever cutter for paper and foil
- Clamping ruler with protective finger edge for optimal hold of the piece which is to be cut
- Marks on cutting table for analogue and digital picture/DIN formats with scale in CM and inch
- Formats and CD/DVD cover
- Angle lines for angular cutting in 5° steps
- Cutting height: max. 10 sheets 80 g/m² (1.0 mm)

008212
5 CB

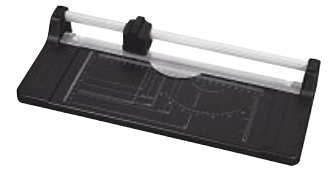


Rotary Trimmers "ProCut 320"

Cut Height	0,5 mm
Cut Length	320 mm

- Designed for maximum safety
- Self-sharpening circular blade for perfect cuts
- Aluminium baseboard and guide bars
- Transparent clamping ruler which automatically presses against the paper during the cut
- Picture and DIN formats printed on the baseboard
- Angle lines for 15°/30°/45° cuts
- Cutting thickness max. 5 sheets 80 g/m² (0.5 mm)

008264
12 CB



Reel Cutter "Easy Cut R 320"

Cut Height	0,5 mm
Cut Length	320 mm

- Rundmesser aus gehärtetem Stahl
- transparentes Anpresslineal
- Führungsstange aus Aluminium
- auswechselbarer Schneidekopf
- Skalierung zum Schneiden für analoge und digitale Bild-/DIN-Formate und CD-/DVD-Cover
- Winkellinien für Schrägschnitt in 5° Schritten
- Schnitthöhe: max. 5 Blatt 80 g/m² (0,5 mm)

008206
5 CB

Cutting Machine

156

Paper Trimmer

157

Glue Dispenser

158

Adhesive dots

160

Photo Tapes

160

Adhesive Photo Corners

161

Photo Glue

162

Pen

162

Paper Trimmer



Reel Cutter "ProCut 310"

Cut Height	0,5 mm
Cut Length	310 mm

- Easy cutting ruler with cutting plate for mobile use
- Safe and straight cut, up to 31 cm, thanks to non-slip rubber feet
- Transparent clamping ruler with measurement division in cm & inch
- High longevity thanks to heat-treated steel blade
- To cut photos and paper
- Cutting height: max. 5 sheets 80g/m² (0.5 mm)



Spare Cutting Head for Paper Trimmer "ProCut 310"

Cut Height	0,5 mm
Cut Length	310 mm

- Spare cutting head for paper trimmer "ProCut 310", Hama item no. 8224

008224

6 BC

008226

6 BC

= minimum order quantity
 = novelty

BC = blister size
HT = hangtag
CB = packed in cardboard box

PO = polybag
BA = banderol

June 2017

hama[®]

157



PHOTO ALBUMS

Creative Accessories

Cutting Machine

156

Paper Trimmer

157

Glue Dispenser

158

Adhesive dots

160

Photo Tapes

160

Adhesive Photo Corners

161

Photo Glue

162

Pen

162

Glue Dispenser



"Quick-Fix" Glue Dispenser, 12 m, permanent

Adhesive liability	permanent
Unroll Quantity	12 m
Colour	Red

- For all types of photo paper
- Permanently self-adhesive, double-sided adhesive line (permanent)
- Narrow adhesive tapes (length of adhesive line is variable)
- Simple and clean rolling, straight or in contour
- Window for controlling the contents
- Simple to refill thanks to the cassette system (the dispenser is suitable for all Quickfix refill cassettes)
- Acid-free and archive-safe
- Solvent-free

10 BC 007967



Refill Cassette "Quick-Fix" Glue Dispenser, permanent

Adhesive liability	permanent
Unroll Quantity	2x 12 m
Colour	Red

- 2 refill cassettes, fit all Quickfix dispensers
- Permanently self-adhesive, double-sided adhesive line (permanent)
- Narrow adhesive tapes (length of adhesive line is variable)
- Simple and clean rolling, straight or in contour
- For all types of photo paper
- Acid-free and storage-proof
- Solvent-free

10 BC 007987



"Quick-Fix" Glue Dispenser, 12 m, non-permanent

Adhesive liability	nonpermanent
Unroll Quantity	12 m
Colour	Blue

- For all types of photo paper
- Self-adhesive, double-sided adhesive line (non-permanent)
- Small adhesive dots (length of adhesive line is variable)
- Photos are easy to detach (adhesive line is easy to remove)
- Simple and clean rolling, straight or in contour
- Window for controlling the contents
- Simple to refill thanks to the cassette system (the dispenser is suitable for all Quickfix refill cassettes)
- Acid-free and storage-proof
- Solvent-free

10 BC 007968

PHOTO ALBUMS



"Quick-Fix" Refill Cassette, non-permanent, 2 x 12 m

Adhesive liability	nonpermanent
Unroll Quantity	2x 12 m
Colour	Blue

- 2 refill cassettes, fit all Quickfix dispensers
- Self-adhesive, double-sided adhesive line (non-permanent)
- Photos are easy to detach (adhesive line is easy to remove)
- Small adhesive dots (length of adhesive line is variable)
- Simple and clean rolling, straight or in contour
- Acid-free and storage-proof
- Solvent-free

007988
10 BC



"Quick-Fix" Glue Dispenser, tapes, permanent, 650 pieces

Adhesive liability	permanent
Unroll Quantity	650 Peaces
Colour	Anthracite

- For all types of photo paper
- Permanently self-adhesive, double-sided tapes (permanent)
- Can be dispensed in individual stripes or in series
- Simple and clean rolling, straight or in contour
- Window for controlling the contents
- Simple to refill thanks to the cassette system (the dispenser is suitable for all Quickfix refill cassettes)
- Acid-free and archive-safe
- Solvent-free

007969
10 BC



"Quick-Fix" Refill Cassette, tapes, 2x 650 pieces

Adhesive liability	permanent
Unroll Quantity	2x 650 Peaces
Colour	Anthracite

- 2 refill cassettes, fit all Quickfix dispensers
- Permanently self-adhesive, double-sided tapes (permanent)
- Can be dispensed in individual stripes or in series
- Simple and clean rolling, straight or in contour
- For all types of photo paper
- Acid-free and archive-safe
- Solvent-free

007989
10 BC

Creative Accessories



PHOTO ALBUMS

Cutting Machine

156

Paper Trimmer

157

Glue Dispenser

158

Adhesive dots

160

Photo Tapes

160

Adhesive Photo Corners

161

Photo Glue

162

Pen

162

Adhesive dots



Glue Dots, 6 mm, 300 pieces, permanent

Number	300
Adhesive liability	permanent
Diameter	6 mm
Colour	Transparent

- For easily fixing small decorations (little stones, ribbons, etc.)
- The dots are self-adhesive on both sides (permanent) and can be applied to a great number of clean and dry surfaces like paper, plastic, metal, wood, glass, etc.
- Thanks to a base film the glue dots can be applied to the respective surfaces without touching them
- Stick in seconds, can be removed from smooth surfaces
- Acid-free and storage-proof
- Solvent-free

	007112
10 BC	

Cutting Machine

156

Paper Trimmer

157

Glue Dispenser

158

Adhesive dots

160

Photo Tapes

160

Adhesive Photo Corners

161

Photo Glue

162

Pen

162

Photo Tapes

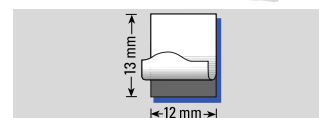


Photo Tapes 1000, display comprising 12 packs

Format	12 x 13 mm
Number	1000

- Suitable for any kind of photo paper
- The tapes are self-adhesive on both sides
- Storage-proof
- Acid-free
- Solvent-free

	029308
12 CB	

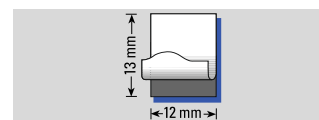


Photo Tapes 1000, special offer

Format	12 x 13 mm
Number	1000

- Suitable for any kind of photo paper
- The tapes are self-adhesive on both sides
- Storage-proof
- Acid-free
- Solvent-free

	007103
200 PO	

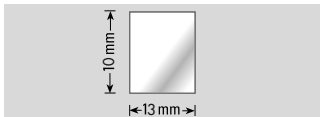


Photo Tape Dispenser, 500 tapes

Format	12 x 13 mm
Number	500

- Suitable for any kind of photo paper
- The tapes are self-adhesive on both sides
- Storage-proof
- Acid-free
- Solvent-free

		007104
8	CB	

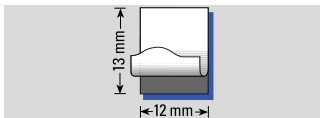


Photo Tape Dispenser, 500 tapes

Format	12 x 13 mm
Number	500

- Suitable for any kind of photo paper
- The tapes are self-adhesive on both sides
- Storage-proof
- Acid-free
- Solvent-free

		007102
10	CB	

Cutting Machine

156

Paper Trimmer

157

Glue Dispenser

158

Adhesive dots

160

Photo Tapes

160

Adhesive Photo Corners

161

Photo Glue

162

Pen

162

Adhesive Photo Corners

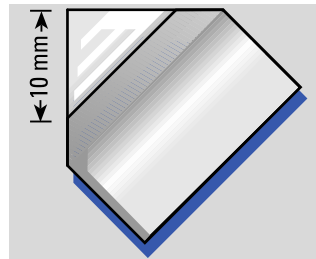


Photo Corner Dispenser, 500 corners, transparent

Material	Viscose/Paper
Edge Length	10 mm
Colour	Transparent
Number	500

- Suitable for any kind of photo paper
- Self-adhesive
- Exactly finishes off with the photo border
- Storage-proof
- Solvent-free

		007111
10	CB	

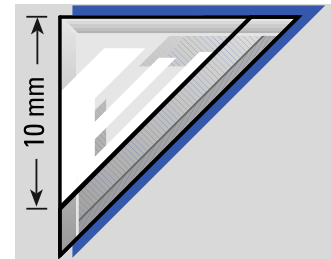


Photo Corner Dispenser

Material	Polypropylene (PP) (antistatic)
Edge Length	10 mm
Colour	Transparent
Number	-

- Suitable for any kind of photo paper
- Self-adhesive
- Storage-proof
- Acid-free
- Solvent-free

500		007107
	10	CB
200		007105
	10	CB



PHOTO ALBUMS

■ = minimum order quantity
■ = novelty

BC = blister size
HT = hangtag
CB = packed in cardboard box

PO = polybag
BA = banderol

Creative Accessories

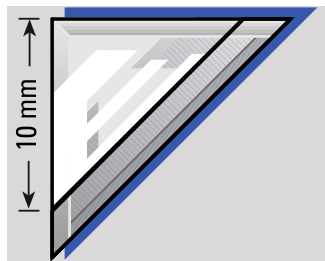


PHOTO ALBUMS

Photo Corner Dispenser, 2x500 corners, double pack

Material	Polypropylene (PP) (antistatic)
Edge Length	10 mm
Colour	Transparent
Number	1000

- Suitable for any kind of photo paper
- Self-adhesive
- Storage-proof
- Acid-free
- Solvent-free

007108	
200	PO

Cutting Machine

Cutting Machine	156
Paper Trimmer	157
Glue Dispenser	158
Adhesive dots	160
Photo Tapes	160
Adhesive Photo Corners	161
Photo Glue	162
Pen	162

Photo Glue



Photo Glue, 10 tubes containing 35 g each

Content	35 g
---------	------

- Not needed glue rubs off easily without leaving any residue
- Allows you to remove mounted photos without damaging them

007100	
10	CB



Photo Glue, tube with 35 g

Content	35 g
---------	------

- Not needed glue rubs off easily without leaving any residue
- Allows you to remove mounted photos without damaging them

007101	
6	BC

Cutting Machine

Cutting Machine	156
Paper Trimmer	157
Glue Dispenser	158
Adhesive dots	160
Photo Tapes	160
Adhesive Photo Corners	161
Photo Glue	162
Pen	162

Pen



Display with "Hybrid Gel Grip" Creative Pens, gold/silver, 48 pcs., assort.

Line Thickness	0,4 mm
Colour	Gold/Silver

- Comfortable rubber grip that delivers smooth and stress-free writing, ideal for prolonged use
- The pigment gel ink is water and fade-resistant
- Ideal for light, dark and coloured paper
- Thanks to the pigments very well suited for absorbent paper, does not run

		001903
18	CB	



"Hybrid Gel Grip" Creative Pen Set, golden/silver

Line Thickness	0,4 mm
Colour	Gold/Silver

- Set comprising one golden and one silver creative pen
- Comfortable rubber grip that delivers smooth and stress-free writing, ideal for prolonged use
- The pigment gel ink is water and fade-resistant
- Ideal for light, dark and coloured paper

		001902
6	CB	



"Hybrid Gel Grip" Creative Pen, black/white

Line Thickness	0,4 mm
Colour	Black/white

- Set comprising one black and one white creative pen
- Comfortable rubber grip that delivers smooth and stress-free writing, ideal for prolonged use
- The pigment gel ink is water and fade-resistant
- Ideal for light, dark and coloured paper

		001906
6	CB	



"Hybrid Gel Grip" Creative Pen, golden

Line Thickness	0,4 mm
Colour	Gold

- Comfortable rubber grip that delivers smooth and stress-free writing, ideal for prolonged use
- The pigment gel ink is water and fade-resistant
- Ideal for light, dark and coloured paper
- Thanks to the pigments very well suited for absorbent paper, does not run

		001900
12	CB	



"Hybrid Gel Grip" Creative Pen, silver

Line Thickness	0,4 mm
Colour	Silver

- Comfortable rubber grip that delivers smooth and stress-free writing, ideal for prolonged use
- The pigment gel ink is water and fade-resistant
- Ideal for light, dark and coloured paper
- Thanks to the pigments very well suited for absorbent paper, does not run

		001901
12	CB	



"Hybrid Gel Grip" Creative Pen, white

Line Thickness	0,4 mm
Colour	White

- Comfortable rubber grip that delivers smooth and stress-free writing, ideal for prolonged use
- The pigment gel ink is water and fade-resistant
- Ideal for light, dark and coloured paper
- Thanks to the pigments very well suited for absorbent paper, does not run

		001904
12	CB	



"Hybrid Gel Grip" Creative Pen, black

Line Thickness	0,4 mm
Colour	Black

- Comfortable rubber grip that delivers smooth and stress-free writing, ideal for prolonged use
- The pigment gel ink is water and fade-resistant
- Ideal for light, dark and coloured paper
- Thanks to the pigments very well suited for absorbent paper, does not run

		001905
12	CB	

■ = minimum order quantity
■ = novelty

BC = blister size
HT = hangtag
CB = packed in cardboard box

PO = polybag
BA = banderol



Index

Overview of all products from A to Z

A		M		Picture Tabs	78
Adhesive dots	160	Memo Clip	88	Plastic Frame	48
Adhesive Photo Corners	161	Motif Album	94	Portrait Frame	8
Adhesive Postcard Backing	89			Portrait Frame Kids Collection	19
Album Pages	148	N		Portrait Gallery Picture Frame	16
Aluminium Picture Frame	21	Negative Sleeve	151	Portrait Gallery Picture Frame Kids Collection	20
B		P		R	
Baby/Child Photo Album	115	Paper Trimmer	157	Ring Binder/Ring Folder	148
C		Passepartout	73	S	
Baby/Child Photo Album Cutting Machine	156	Passe-Partout	71	Sheet	71
F		Pen	162	Slide Sleeves	150
Frameless Picture Holder	80	Photo Ball/Cube	86	T	
G		Photo Gallery Frameless Picture Holder	84	Ticklers	92
Glue Dispenser	158	Photo Gallery Picture Frame	46	W	
H		Photo Gallery Picture Frame	65	Wedding Photo Album	132
Holiday Photo Album	142	Photo Glue	162	Wood Picture Frame	26
		Photo Keyring Pedant	87		
		Photo Sleeve	149		
		Photo Tapes	160		
		Picture Prob	85		



General Terms and Conditions

1. General Information

We shall carry out deliveries exclusively in accordance with the following conditions. The purchasing party shall recognise these conditions of purchase as binding for all future transactions. Any agreement deviating from these terms requires our express written confirmation. No purchase conditions of the purchasing party that differ from the conditions stated here shall be considered valid unless they have been expressly accepted in writing by Hama. Our general terms and conditions shall be considered accepted upon receipt of the goods, at the latest. We shall store and process customer information electronically, in so far as this is required for the proper conclusion of the given business transaction, in accordance with all relevant data protection regulations.

2. Quotation, Order and Minimum Order Value

Issuing a quotation does not obligate Hama to accept the order. Changes shall be made in writing. Technical details and illustrations of articles for sale in advertising brochures and other advertising information are not binding features, but instead descriptions or labelling of our products. Factory tolerances as considered usual within the trade shall be considered binding in all cases in so far as no special limits for acceptable deviation have been agreed upon. Where samples have been provided, Hama shall make every effort to deliver to the quality and specifications of the relevant sample. Slight deviations shall not constitute grounds for a claim on the part of the ordering party.

a) Domestic orders

We shall apply a surcharge in the amount of € 4.00 for orders below the minimum net order value of € 50.00.

b) International orders

The minimum value for foreign orders shall be defined in a separate agreement.

3. Prices

All prices are ex works or warehouse and subject to legally stipulated value added tax at point of transaction. Postage and packaging costs are itemised separately on our invoices, as is transport insurance.

4. Delivery and Period of Delivery

Unless the period of delivery has been agreed upon in written form for a specific case, delivery dates are to be understood as approximate dates to which we shall adhere whenever possible. Should the period of delivery be exceeded, the purchasing party may set an appropriate extension of said period, after the end of which they may withdraw from the contract through written declaration of their intent to do so.

The period of delivery shall be considered adhered to if the object of delivery has left the factory or notification of readiness to ship has been sent before the end of said period.

The period of delivery shall be extended in the event of industrial disputes, particularly strikes and lockouts, as well as unpredicted obstructions beyond our control such as disruption of production, delay in the delivery of essential materials and other such disruptions that demonstrably bear on the delivery of the goods to be delivered. The same applies should such eventualities affect subcontractors. The period of delivery is extended according to the duration of such eventualities and obstructions. Should delivery become impossible or unreasonable, we are released from the responsibility of making delivery.

We are also not responsible for the aforementioned circumstances if they occur during an already existing delay. In important cases, the onset and conclusion of such obstructions shall be communicated by Hama to the ordering party at the earliest possible occasion.

The purchasing party shall have no right to compensation for delayed delivery, unless deliberate or gross negligence on our part can be demonstrated.

We are entitled to undertake partial deliveries in acceptable and reasonable quantities. Disputes over partial delivery do not entitle the purchasing party to refuse further partial deliveries.

5. Shipping and Transfer of Risk

All deliveries take place at the expense of the purchasing party.

The choice of route and means of transport are determined by Hama to ensure the swiftest transportation and punctual arrival to the best of its knowledge but without liability on the part of Hama.

Risk shall be transferred to the purchasing party when the object of delivery is received by the forwarding agent, carrier or other transporting agent – including those that are employed by us – and in any case no later than when the object leaves the factory or warehouse. This also applies to FOB and CIF transactions.

Goods for which notice has been given that they are ready for dispatch on the agreed upon date must be retrieved immediately. Hama is otherwise at liberty to store goods at the cost and risk of the customer as it considers fit, and to charge such goods as ex works or warehouse. The same applies if delivery cannot occur as a result of failure or suspension of transport, or of other conditions for which we cannot be held responsible. Should the ordering party delay acceptance of delivery for more than fourteen days after receiving notification of availability either intentionally or through gross negligence, Hama shall be, after an extension of a further fourteen days, entitled to withdraw from the contract or to demand compensation for breach of contract.

6. Terms of Payment

a) Creditworthiness

In the case of delayed payment and justified concerns as to the solvency and creditworthiness of a purchasing party, Hama is within its rights to demand securities or advance payment for pending deliveries and to make all claims of the financial transaction immediately payable without affecting our other rights.

b) Terms of Payment, Domestic

Payment shall be made in cash or by transfer of funds at a discount of 2 per cent of the invoice amount if made within ten days, or without any discount on the fixed price if made within thirty days. Payment shall be made irrespective of receipt of goods. In the absence of other agreements, advance payment shall be required. Payment by the ordering party shall be considered in default if such payment has not been made within the payment period starting upon receipt of the invoice. Set-off and retention rights shall only be granted to the ordering party if counterclaims are legally recognised, beyond dispute or recognised by Hama.

We only accept rediscountable bills of exchange from the Bundesbank by special arrangement and on account of payment. Bills of exchange or cheques shall, subject to receipt, be credited with the value date of the day on which Hama shall finally have access to the proceeds. All costs incurred thereby are the responsibility of the purchasing party.

If the payment deadline is exceeded, article 288 of the German Civil Code shall apply.

c) Terms of Payment, International

Only written terms of payment are valid for export trade. In the absence of such agreements, advance payment shall be required.

7. Retention of Title

Hama itself shall retain title of delivered goods until such time as the customer has made all payments resulting from the transaction, including those covering interest and costs, and any necessary balancing of a current account and any cheques or bills given in payment have been fully honoured. As long as payment resulting from the transaction remains due, the following shall apply:

The purchasing party is within its rights to sell, process or use goods subject to this retention of title within the normal course of business. Should the purchasing party be placed in default due to outstanding payments, all factory-condition goods in the hands of the purchasing party and/or goods still to be received shall be put at our disposal.

Should any goods to which Hama maintains title be sold, all claims to reimbursement shall be transferred to Hama without any particular act of transfer being required when demand is made.

The purchasing party may collect such claims as have been transferred to Hama, but must immediately redirect collected funds to Hama. The same also applies to all claims arising from any other service provided by Hama.

The purchasing party is not entitled to pledge goods or ceded claims or to use such goods or claims as securities. Hama must be immediately notified of seizures by third parties. The purchasing party is obligated to insure goods against fire damage and theft and to furnish proof of insurance upon request. The retention of title extends to cover new items produced by processing. If property of the purchasing party is mixed or combined with items owned by Hama, Hama acquires partial ownership under articles 947/948 of the German Civil Code. On the request of the purchasing party, Hama shall release its securities in so far as the value of our securities exceeds more than 20% of the claim on a non-temporary basis. The choice of securities to be released lies with Hama.

8. Claims for Defects and Warranty

a) Claims for Defects

Hama warrants that its goods shall be free of material defects and defects of title at the time of transfer of risk. The warranty period begins with receipt of the goods by the customer and lasts two years.

Received goods shall be checked on receipt as to proper quality. The purchasing party shall notify Hama of any detectable defects in writing within fourteen days of receipt of goods. Hidden defects shall be reported in writing as soon as they are detected, at the latest within two years after receipt of goods. In the event of justified complaints made within the appropriate period, Hama shall rectify the defects, exchange the goods, or issue a credit note at its discretion.

b) Warranty

Hama warrants some of its products as indicated on the relevant product warranty card. Defects of material or fabrication shall be rectified within the warranty period by repair or replacement at Hama's discretion.

The warranty does not cover claims for damages of any kind, particularly not for replacement due to consequential damage. If the device in question is still under warranty, it shall be sent to Hama along with details of the defect and the dealer's receipt as proof of warranty.

c) Voiding of Claims for Defects and Warranties

In the case of defects caused by force or improper use, as well as in the case of repairs or actions by the purchasing party or third parties without our express written consent, the right to claim for defects and the warranty become null and void.

In the case of articles subject to wear and tear, no damage resulting from use over and above appropriate norms shall constitute a defect.

d) Reimbursement of Expenses

Reimbursement of expenses pursuant to article 439 II of the German Civil Code shall be agreed with Hama on an individual basis. This only applies to purchasing parties who themselves sell the goods they receive to private individuals. Any further liability for other reimbursement of expenses is excluded by Hama. The purchasing party has no other rights.

e) Postage and Shipping Costs

The sender is responsible for initially paying the postage and shipping costs for any shipments sent to Hama relating to claims for defects, warranties, product liability claims and similar matters. These costs will be reimbursed once the validity of the claim is acknowledged.

9. Disclaimer

Regardless of the legal basis of such claims, our liability for damages is limited to intentional acts and gross negligence, including intentional acts and gross negligence on the part of our representatives and agents. In so far as no intentional breach of duty exists, liability is limited to foreseeable damage that typically occurs. In the case of breach of an essential cardinal duty, we assume liability irrespective of the degree of fault. However, our liability is limited here to foreseeable damage that typically occurs.

Liability due to non-accidental injury to life, limb or health is not affected. Liability is also not affected in so far as it is mandated by the German Product Liability Act, in the case of wilful deception or if a warranty is provided.

10. Returns

If it is necessary to clear merchandise, the scope and execution is generally to be clarified with us or with our field service. The following products are excluded from merchandise clearing: storage media, picture frames, opened display items, items with minimum order quantities and products that have been discontinued from our line. We also reserve the right to exclude from merchandise clearing individual product ranges that might be damaged during transport, that were delivered as part of a sales campaign or that could result in increased costs/procedures for returns and disposal. Goods must be returned in the original packaging and with all shipping costs paid by the sender. The invoice belonging to the original delivery must accompany the shipment. Credit notes from the return of goods may only be charged against new orders of goods. Credit notes are subject to relevant deductions. Handling costs are set at fifteen per cent of the credited value of goods.

11. Applicable Law

The material law of the Federal Republic of Germany shall apply. International law on the purchase of moveable goods shall not apply, even if the purchasing party has headquarters abroad.

12. Place of Performance and Jurisdiction

The place of performance for both parties is Monheim, Bavaria, Germany. In the event of any disputes arising from contractual conditions, all lawsuits are to be filed at the court whose jurisdiction covers our headquarters if the ordering party is a merchant under commercial law, a legal entity under public law or a special fund under public law. We also reserve the right to file lawsuits at the location of the headquarters of the purchasing party.

Hama GmbH & Co KG
Dresdner Straße 9
86653 Monheim/Bayern

Monheim, June 2016



PO Box · 86651 Monheim/Germany
Phone: +49 9091 502-0
Fax: +49 9091 502-458
info.de@hama.com
www.hama.com

www.facebook.com/Hama.Germany

All listed brands are trademarks of the respective companies.
Errors and omissions excepted, and subject to technical changes.
Our general terms of business are applied. Printed in Germany.

097931/06.2017

